

INTERNATIONAL IRON AND STEEL INSTITUTE

Steel Statistical Yearbook 1990

COMMITTEE ON STATISTICS
Brussels 1990





Steel Statistical Yearbook 1990

COMMITTEE ON STATISTICS
Brussels 1990

© Copyright by
INTERNATIONAL IRON AND STEEL INSTITUTE
Association internationale à but scientifique
1990

ALL RIGHTS RESERVED
For permission to reproduce any part of this material,
or for additional copies write to:

Secretary General
INTERNATIONAL IRON AND STEEL INSTITUTE
Rue Col. Bourg, 120
B-1140 Brussels, Belgium

Printed in Belgium





INTRODUCTION

This yearbook presents a cross-section of steel industry statistics which are exchanged or published by the International Iron and Steel Institute. The contents were finalised in November 1990.

In general the statistics presented are based on a broad definition of the steel industry and its products, covering blast furnaces and their associated raw material preparation facilities; steel melting and casting shops, with associated foundries; hot and cold rolling and finishing; manufacture of tube and pipe, and wire drawing. Crude steel is defined as the total of usable ingots, continuously cast semi-finished products, and liquid steel for castings. Pig iron comprises both steelmaking and foundry iron, but excludes direct reduced iron. Countries are classified on an economic and geographic basis: the Western World excludes the USSR, the People's Republic of China, and other centrally planned economies. Western World countries are divided into two categories, industrial and developing, in many of the tables.

The unit of measurement employed is the metric ton (1,000 kg. or 2,205 lbs.). Due to rounding, some columns or rows may not add exactly to the stated totals. E indicates that the figure has been estimated by IISI, three dots (...) indicates that an item of information was not available. Further explanatory notes related to specific tables can be found in the Appendix.

Enquiries should be addressed to:-

Philip L. Norris
Department of Economic Affairs
International Iron and Steel Institute
rue Colonel Bourg, 120
B-1140 Brussels
Belgium





CONTENTS

Table		Page
	<u>Production</u>	
1	World Crude Steel Production Summary	1
2	Crude Steel Production by Country	2
3	Monthly Crude Steel Production	4
4	Crude Steel Production by Process	6
5	Continuously Cast Steel	8
	<u>Deliveries</u>	
6	Total Deliveries of Steel Products	
	Argentina	12
	Belgium	13
	Brazil	14
	Canada	15
	France	16
	F.R. Germany	17
	Italy	18
	Japan	19
	Republic of Korea	20
	Luxembourg	21
	Netherlands	22
	Portugal	23
	Spain	24
	Taiwan (R.O.C.)	25
	United Kingdom	26
	United States	27
	Table 6A - selected countries	28
	<u>Trade</u>	
7	Exports of Finished and Semi-Finished Products	30
8	Imports of Finished and Semi-Finished Products	32
9	Steel Trade as a Percentage of World Steel Production	34
	<u>Consumption</u>	
10	Apparent Consumption of Crude Steel	35
11	Apparent Crude Steel Consumption Per Capita	38
12	Apparent Consumption of Finished Steel	41
13A	Steel Intensity of G.D.P. (crude steel)	44
13B	Steel Intensity of G.D.P. (finished steel)	45
	<u>Raw Materials</u>	
14	Direct Reduced Iron Production	46
15	Production of Pellets	47
16	Sinter Production	48
17	Pig Iron Production	50
18	Pig Iron Exports	52
19	Pig Iron Imports	53
20	Iron Ore Production	54
21	Iron Ore Exports	56
22	Iron Ore Imports	57
23	Scrap Consumption	59
24	Scrap Exports	60
25	Scrap Imports	61
	Appendix: Explanatory Notes	63



Table 1

WORLD CRUDE STEEL PRODUCTION SUMMARY

million metric tons

Year	Production	Year	Production
1900	28.3	1950	189.8
1901	31.0	1951	211.3
1902	34.5	1952	211.7
1903	36.1	1953	234.9
1904	36.3	1954	224.3
1905	44.9	1955	270.2
1906	51.2	1956	283.3
1907	53.0	1957	292.7
1908	41.4	1958	268.7
1909	54.2	1959	299.1
1910	60.3	1960	335.5
1911	60.5	1961	346.4
1912	72.8	1962	355.2
1913	76.4	1963	381.8
1914	60.4	1964	427.7
1915	66.6	1965	447.9
1916	78.2	1966	465.7
1917	82.0	1967	496.7
1918	77.2	1968	529.5
1919	58.5	1969	573.3
1920	72.5	1970	594.0
1921	45.2	1971	579.0
1922	68.8	1972	626.2
1923	78.3	1973	690.7
1924	78.5	1974	703.4
1925	90.4	1975	643.4
1926	93.4	1976	675.1
1927	101.8	1977	675.1
1928	110.0	1978	716.4
1929	120.8	1979	746.5
1930	95.1	1980	715.6
1931	69.6	1981	706.9
1932	50.7	1982	644.9
1933	68.0	1983	663.4
1934	82.4	1984	710.3
1935	99.5	1985	718.9
1936	124.3	1986	713.4
1937	135.7	1987	735.9
1938	110.0	1988	778.8
1939	137.1	1989	784.4
1940	140.6		
1941	153.8		
1942	151.4		
1943	159.6		
1944	151.2		
1945	113.1		
1946	111.6		
1947	136.0		
1948	155.3		
1949	160.0		

Table 2

CRUDE STEEL PRODUCTION

thousand metric tons

	1980	1981	1982	1983	1984	1985	1986	1987	1988	1989
Belgium	12,422	12,377	9,992	10,154	11,300	10,683	9,713	9,783	11,217	10,948
Denmark	734	612	560	493	548	528	632	606	650	624
France	23,176	21,258	18,402	17,582	19,000	18,808	17,857	17,693	19,122	19,337
F.R. Germany	43,838	41,610	35,880	35,729	39,389	40,497	37,134	36,248	41,023	41,073
Greece	870	909	933	868	898	985	1,010	907	959	958
Ireland	2	32	61	141	166	203	208	220	271	324
Italy	26,501	24,777	24,009	21,811	24,062	23,898	22,985	22,819	23,760	25,180
Luxembourg	4,618	3,790	3,510	3,294	3,987	3,945	3,705	3,302	3,661	3,721
Netherlands	5,272	5,472	4,354	4,477	5,739	5,517	5,283	5,082	5,518	5,681
Portugal	663	555	507	685	697	684	721	721	799	729
Spain	12,643	12,896	13,178	13,009	13,497	14,193	11,882	11,691	11,886	12,797
United Kingdom	11,277	15,573	13,704	14,986	15,121	15,722	14,725	17,414	18,950	18,740
E.C. Total	142,016	139,861	125,090	123,229	134,404	135,663	125,855	126,486	137,816	140,112
Austria	4,623	4,656	4,258	4,411	4,870	4,660	4,292	4,301	4,560	4,718
Finland	2,508	2,428	2,414	2,416	2,639	2,518	2,586	2,669	2,798	2,921
Norway	862	848	768	876	916	944	836	851	910	637
Sweden	4,237	3,770	3,900	4,210	4,705	4,813	4,716	4,595	4,779	4,692
Switzerland	929	934	835	835	978	987	1,075	866	988	916
Turkey	2,536	2,425	3,183	3,834	4,330	4,864	5,928	7,044	7,982	7,852
Yugoslavia	3,634	3,977	3,850	4,134	4,236	4,480	4,520	4,367	4,487	4,500
Other Western Europe	19,329	19,038	19,208	20,716	22,674	23,266	23,953	24,693	26,504	26,236
Total Western Europe	161,345	158,899	144,298	143,945	157,078	158,929	149,808	151,179	164,320	166,347
Canada	15,901	14,811	11,871	12,832	14,699	14,637	14,081	14,737	14,866	15,458
United States	101,456	109,614	67,656	76,762	83,941	80,068	74,032	80,877	90,650	88,853
Japan	111,395	101,676	99,548	97,179	105,586	105,279	98,275	98,513	105,681	107,909
Australia	7,589	7,635	6,371	5,676	6,302	6,609	6,674	6,100	6,387	6,732
New Zealand	230	221	252	234	280	227	287	409	460	608
South Africa	9,067	9,005	8,280	7,180	7,732	8,507	8,895	8,991	8,837	9,567
Total Industrial Cts.	406,983	401,861	338,276	343,808	375,618	374,256	352,052	360,806	391,201	395,474
Argentina	2,687	2,526	2,913	2,943	2,647	2,942	3,235	3,633	3,631	3,893
Brazil	15,337	13,226	12,995	14,671	18,386	20,455	21,233	22,228	24,657	25,017
Central America	139	113	248	270	102	101	133	129	116	101
Chile	704	644	492	618	692	689	706	726	899	813
Colombia	420	402	422	482	507	530	632	689	712	706
Ecuador	17	28	28	23	18	18	17	25	23	23
Mexico	7,156	7,663	7,056	6,978	7,560	7,399	7,225	7,642	7,779	7,850
Paraguay	0	0	0	0	0	0	0	13	62	55
Peru	447	364	273	299	337	410	507	511	481	401
Trinidad & Tobago			183	210	187	172	326	361	361	347
Uruguay	13	15	28	46	41	39	31	30	29	39
Venezuela	1,975	2,030	2,226	2,367	2,777	3,055	3,401	3,699	3,650	3,390
Total Latin America	28,900	27,011	26,863	28,906	33,254	35,811	37,448	39,688	42,402	42,635

Table 2
(continued)

CRUDE STEEL PRODUCTION
thousand metric tons

	1980	1981	1982	1983	1984	1985	1986	1987	1988	1989
Algeria	388	557	868	892	755	1,414	1,450	1,533	1,412	1,042
Egypt	968	1,015	1,074	979	928	1,028	1,013	1,433	2,025	2,114
Nigeria	20	22	90	182	229	321	200	184	234	213
Tunisia	185	180	112	170	173	167	189	196	150	194
Zimbabwe	805	691	538	647	423	731	674	597	602	592
Other Africa (E)	70	70	70	75	75	75	75	75	75	75
Total Africa	2,436	2,535	2,752	2,945	2,583	3,736	3,601	4,018	4,498	4,230
Iran	550	565	550	734	854	836	838	839	978	1,081
Israel	115	114	87	83	92	100	110	116	99	100
Qatar	461	469	495	469	478	533	507	492	527	585
Saudi Arabia	0	0	0	275	842	1,106	1,100	1,365	1,614	1,810
Other (E)	100	100	100	100	100	100	100	100	100	100 E
Total Middle East	1,226	1,248	1,232	1,661	2,366	2,675	2,655	2,912	3,318	3,676
Bangladesh	131	134	78	58	88	122	116	120	120	120 E
Hong Kong (E)	120	120	120	120	120	120	120	120	120	150 E
India	9,514	10,765	10,997	10,237	10,549	11,936	12,197	13,121	14,309	14,429
Indonesia	543	621	693	983	1,171	1,374	1,729	2,059	1,850	1,850 E
Malaysia	210	210	210	350	350	400	400	550	550	550 E
Pakistan		10	20	120	300	750	900	1,000	1,200	1,200 E
Philippines	330	350	350	200	250	250	250	300	300	400 E
Singapore	340	263	359	305	362	365	390	441	432	495
Republic of Korea	8,558	10,753	11,758	11,915	13,034	13,539	14,555	16,782	19,118	21,873
Taiwan (R.O.C.)	3,417	3,157	4,152	5,031	5,241	5,306	5,545	5,915	8,288	9,047
Thailand	450	300	312	244	381	447	460	534	535	550 E
Other (E)	40	40	50	50	50	60	60	60	70	70 E
Total Asia	23,653	26,723	29,099	29,613	31,896	34,669	36,722	41,002	46,892	50,734
Total Developing Cts.	56,215	57,517	59,946	63,125	70,099	76,891	80,426	87,620	97,110	101,276
Total Western World	463,198	459,378	398,222	406,933	445,717	451,147	432,478	448,426	488,311	496,750
Bulgaria	2,567	2,483	2,586	2,825	2,878	2,945	2,965	3,044	2,880	2,899
Czechoslovakia	14,925	15,270	14,992	15,024	14,831	15,036	15,112	15,416	15,380	15,465
German Dem. Rep.	7,308	7,467	7,168	7,219	7,573	7,852	7,967	8,243	8,133	7,829
Hungary	3,767	3,645	3,702	3,617	3,770	3,647	3,716	3,622	3,582	3,315
Poland	19,485	15,719	14,794	16,236	16,533	16,126	17,144	17,145	16,873	15,094
Romania	13,175	13,025	13,055	12,593	14,437	13,795	14,276	14,962	14,314	14,415
U.S.S.R.	147,931	148,517	147,153	152,511	154,230	154,653	160,537	161,874	163,037	160,096
Total Eastern Europe	209,158	206,126	203,450	210,025	214,252	214,054	221,717	224,306	224,199	219,113
Cuba	304	330	301	364	338	408	411	402	314	336
China	37,121	35,604	37,160	40,021	43,475	46,794	52,208	56,020	59,136	61,320
D.P.R. Korea (E)	5,800	5,500	5,800	6,100	6,500	6,500	6,600	6,730	6,830	6,930
Total C.P.E.'s	252,383	247,560	246,711	256,510	264,565	267,756	280,936	287,458	290,479	287,699
World Total	715,581	706,938	644,933	663,443	710,282	718,903	713,414	735,884	778,790	784,449

E - estimate

Table 3

MONTHLY CRUDE STEEL PRODUCTION

thousand metric tons

European Community

	1980	1981	1982	1983	1984	1985	1986	1987	1988	1989	1990
January	11,781	10,948	11,620	9,466	10,920	10,968	11,043	9,705	11,442	12,172	11,508
February	11,593	11,096	11,493	9,675	11,174	10,795	10,517	9,964	11,104	11,486	11,169
March	12,852	12,375	12,355	10,956	11,947	12,194	11,262	11,253	11,744	12,174	12,449
April	12,811	11,586	11,739	10,211	10,940	11,485	11,081	10,656	11,079	12,212	11,543
May	13,444	12,293	11,968	10,823	11,732	11,777	10,567	11,376	11,602	11,916	11,860
June	13,047	11,963	11,044	10,621	11,404	11,877	10,516	10,935	11,664	12,009	11,277
July	12,055	11,517	9,726	9,537	11,036	11,164	9,874	10,327	10,941	11,480	10,903
August	9,952	9,836	7,596	7,944	8,889	9,252	8,299	8,458	9,706	10,197	9,722
September	11,272	11,972	9,593	10,587	11,525	11,403	10,712	10,360	11,748	11,601	11,462
October	11,672	12,134	9,604	11,294	11,946	11,873	11,064	11,298	12,386	11,834	
November	11,036	11,986	9,202	10,980	11,490	11,426	10,565	10,912	12,066	11,589	
December	9,672	10,937	8,173	10,009	10,269	10,183	9,103	10,034	10,963	9,969	
Year total	141,187	138,643	124,113	122,103	133,272	134,397	124,603	125,278	136,445	138,838	101,893

United States

	1980	1981	1982	1983	1984	1985	1986	1987	1988	1989	1990
January	9,708	9,607	7,017	5,052	7,230	6,336	6,955	5,668	7,602	7,919	7,477
February	9,373	9,097	6,510	5,149	7,386	6,215	6,505	5,436	7,243	7,278	6,916
March	10,337	10,657	7,300	6,464	8,215	7,502	7,209	6,690	7,950	8,162	7,716
April	9,669	10,199	6,354	6,615	8,162	7,141	7,064	6,715	7,619	7,927	7,447
May	8,370	10,363	6,057	6,724	8,323	7,103	6,909	6,932	8,013	7,832	7,738
June	6,805	9,481	5,487	6,344	7,208	6,615	6,105	6,667	7,285	7,413	7,386
July	6,165	9,217	5,187	6,279	6,768	6,359	5,763	6,644	7,542	7,217	7,349
August	6,367	9,181	5,023	6,369	6,273	6,468	5,142	6,799	7,421	7,067	7,668
September	7,046	8,725	4,806	6,472	5,786	6,282	5,120	6,980	7,472	6,910	7,343
October	8,566	8,167	4,773	6,978	6,081	6,669	5,522	7,324	7,559	7,416	
November	9,124	7,223	4,123	6,589	5,826	6,396	5,317	7,150	7,152	6,700	
December	9,235	6,959	4,042	6,342	5,455	6,104	5,331	7,180	7,216	6,551	
Year total	100,765	108,876	66,679	75,377	82,713	79,190	72,942	80,185	90,074	88,392	67,039

Japan

	1980	1981	1982	1983	1984	1985	1986	1987	1988	1989	1990
January	9,648	8,314	8,787	7,677	8,645	8,875	8,568	7,797	9,081	9,055	9,172
February	9,237	7,785	8,206	7,121	8,325	8,426	7,877	7,261	8,540	8,344	8,274
March	9,579	8,354	8,813	7,759	8,608	9,162	8,496	7,987	8,788	8,986	9,170
April	9,801	8,438	8,788	7,964	8,822	9,113	8,438	8,237	8,794	9,082	9,126
May	9,969	8,516	8,766	8,207	9,031	9,159	8,526	8,225	8,795	9,191	9,335
June	9,506	8,416	8,453	8,005	8,719	8,779	8,267	7,946	8,537	8,968	8,980
July	9,481	8,748	8,191	8,408	9,068	8,965	8,077	8,153	8,940	9,189	9,189
August	8,905	8,516	7,925	8,139	8,836	8,539	7,764	8,158	8,559	8,769	9,157
September	8,940	8,398	7,867	8,202	8,621	8,289	7,910	8,010	8,618	8,710	9,076
October	9,192	9,006	8,060	8,913	9,186	8,917	8,227	8,984	9,365	9,435	
November	8,609	8,668	7,888	8,459	8,828	8,498	8,024	8,862	8,822	8,933	
December	8,528	8,516	7,803	8,315	8,895	8,559	8,101	8,893	8,842	9,247	
Year total	111,395	101,675	99,547	97,169	105,584	105,281	98,275	98,513	105,681	107,909	81,479

Table 3
(continued)

MONTHLY CRUDE STEEL PRODUCTION
thousand metric tons

Other Reporting Countries

	1980	1981	1982	1983	1984	1985	1986	1987	1988	1989	1990
January	8,748	8,487	8,537	7,605	9,233	9,192	10,232	10,202	11,525	12,086	11,849
February	8,201	8,138	7,998	7,318	8,795	8,806	9,480	9,671	10,923	11,452	10,863
March	8,678	9,202	8,832	8,288	9,671	10,170	10,526	10,650	11,822	12,673	12,212
April	8,260	8,660	8,261	8,014	9,226	9,365	9,970	10,171	11,223	12,089	11,165
May	8,392	8,892	8,501	8,360	9,390	9,831	10,234	10,662	11,503	11,924	11,333
June	8,279	8,497	8,033	8,169	9,105	9,611	9,765	10,346	11,289	11,486	11,067
July	8,171	8,230	7,881	7,990	8,899	9,186	9,412	10,045	11,217	11,496	10,672
August	8,400	7,830	8,219	8,477	9,312	9,726	9,929	10,561	11,482	11,939	10,894
September	8,198	7,919	7,989	8,606	9,175	9,986	10,056	10,920	11,558	11,532	11,061
October	8,547	8,149	7,905	9,106	9,666	10,439	10,457	11,292	12,089	12,276	
November	8,528	7,870	7,551	8,855	9,197	10,116	10,258	10,999	11,666	11,777	
December	8,440	8,355	7,367	8,661	9,267	10,249	10,217	11,049	11,851	11,892	
Year total	100,842	100,229	97,074	99,449	110,936	116,677	120,536	126,568	138,148	142,622	101,115

Total 29 Reporting Countries

	1980	1981	1982	1983	1984	1985	1986	1987	1988	1989	1990
January	39,885	37,356	35,961	29,800	36,028	35,371	36,798	33,372	39,650	41,232	40,006
February	38,404	36,116	34,207	29,263	35,680	34,242	34,379	32,332	37,810	38,560	37,221
March	41,446	40,588	37,300	33,467	38,441	39,028	37,493	36,580	40,304	41,995	41,546
April	40,541	38,883	35,142	32,804	37,150	37,104	36,553	35,779	38,715	41,310	39,281
May	40,175	40,064	35,292	34,114	38,476	37,870	36,236	37,195	39,913	40,863	40,266
June	37,637	38,357	33,017	33,139	36,436	36,882	34,653	35,894	38,775	39,876	38,710
July	35,872	37,712	30,985	32,214	35,771	35,674	33,126	35,169	38,640	39,382	38,113
August	33,624	35,363	28,763	30,929	33,310	33,985	31,134	33,976	37,168	37,972	37,441
September	35,456	37,014	30,255	33,867	35,107	35,960	33,798	36,270	39,396	38,753	38,941
October	37,977	37,456	30,342	36,291	36,879	37,898	35,270	38,898	41,399	40,961	
November	37,297	35,747	28,764	34,883	35,341	36,436	34,164	37,923	39,706	38,999	
December	35,875	34,767	27,385	33,327	33,886	35,095	32,752	37,156	38,872	37,659	
Year total	454,189	449,423	387,413	394,098	432,505	435,545	416,356	430,544	470,348	477,561	351,526

In these tables, the European Community figures comprise the following ten countries: Belgium, Denmark, F.R. Germany, France, Italy, Luxembourg, Netherlands, Portugal, Spain, United Kingdom. Ireland and Greece, which do not report monthly production to IISI, are excluded.

Other reporting countries include Austria, Finland, Norway, Sweden, Turkey, Yugoslavia, Canada, Argentina, Brazil, Chile, Mexico, Venezuela, Australia, India, Republic of Korea, South Africa, and Taiwan (R.O.C.).

Since 1984 Nigeria has been included in the monthly crude steel production report IISI 101/102, and from 1988 Qatar, Saudi Arabia, and Zimbabwe were also incorporated. However these four countries have been excluded from the above figures in order to retain comparability over all years shown.

The above figures may differ slightly from those in Table 2, due to annual revisions which cannot be allocated month-by-month.

Table 4

CRUDE STEEL PRODUCTION BY PROCESS - 1988

	thousand metric tons				Total	percentage of total production			
	B.O.F.	E.A.F.	O.H.	Other		B.O.F.	E.A.F.	O.H.	Other
Belgium	10,298	919			11,217	91.8	8.2	0.0	0.0
Denmark		650			650	0.0	100.0	0.0	0.0
France	14,083	5,039			19,122	73.6	26.4	0.0	0.0
F.R. Germany	33,938	7,085			41,023	82.7	17.3	0.0	0.0
Ireland		271			271	0.0	100.0	0.0	0.0
Italy	10,534	13,221		5	23,760	44.3	55.6	0.0	0.0
Luxembourg	3,661				3,661	100.0	0.0	0.0	0.0
Netherlands	5,263	255			5,518	95.4	4.6	0.0	0.0
Portugal	469	330			799	58.7	41.3	0.0	0.0
Spain	4,751	7,135			11,886	40.0	60.0	0.0	0.0
United Kingdom	14,008	4,942			18,950	73.9	26.1	0.0	0.0
E.C. Total	97,005	39,847	0	5	136,857	70.9	29.1	0.0	0.0
Austria	4,204	356			4,560	92.2	7.8	0.0	0.0
Finland	2,327	471			2,798	83.2	16.8	0.0	0.0
Norway	385	525			910	42.3	57.7	0.0	0.0
Sweden	2,479	2,300			4,779	51.9	48.1	0.0	0.0
Turkey	3,591	3,809	582		7,982	45.0	47.7	7.3	0.0
Yugoslavia	1,913	1,416	1,158		4,487	42.6	31.6	25.8	0.0
Other Western Europe	14,899	8,877	1,740	0	25,516	58.4	34.8	6.8	0.0
Total Western Europe	111,904	48,724	1,740	5	162,373	68.9	30.0	1.1	0.0
Canada (1)	10,065	4,801			14,866	67.7	32.3	0.0	0.0
United States	52,581	33,426	4,643		90,650	58.0	36.9	5.1	0.0
Japan	74,248	31,433			105,681	70.3	29.7	0.0	0.0
Australia	5,964	423			6,387	93.4	6.6	0.0	0.0
New Zealand	267	193			460	58.0	42.0	0.0	0.0
South Africa	5,498	3,211		128	8,837	62.2	36.3	0.0	1.5
Total Industrial Cts.	260,526	122,212	6,383	133	389,255	66.9	31.4	1.6	0.0
Argentina	1,448	1,758	425		3,631	39.9	48.4	11.7	0.0
Brazil	18,523	5,536	196	402	24,657	75.1	22.5	0.8	1.6
Chile	860	39			899	95.7	4.3	0.0	0.0
Mexico	3,286	3,564	929		7,779	42.2	45.8	11.9	0.0
Peru	176	305			481	36.6	63.4	0.0	0.0
Venezuela		3,078	571		3,650	0.0	84.3	15.7	0.0
India	5,643	3,791	4,875		14,309	39.4	26.5	34.1	0.0
Republic of Korea	13,079	6,039			19,118	68.4	31.6	0.0	0.0
Taiwan (R.O.C.)	5,613	2,675			8,288	67.7	32.3	0.0	0.0
Total Western Cts.	309,154	148,998	13,379	535	472,066	65.5	31.6	2.8	0.1
Bulgaria	1,426	1,137	317		2,880	49.5	39.5	11.0	0.0
Czechoslovakia (2)	7,034	2,110	6,236		15,380	45.7	13.7	40.5	0.0
German Dem. Rep.	2,307	2,501	3,309	16	8,133	28.4	30.8	40.7	0.2
Hungary	1,657	415	1,510		3,582	46.3	11.6	42.2	0.0
Poland	7,442	2,802	6,620	9	16,873	44.1	16.6	39.2	0.1
Romania (2)	6,960	3,394	3,960		14,314	48.6	23.7	27.7	0.0
U.S.S.R.	55,588	21,811	85,552	86	163,037	34.1	13.4	52.5	0.1
Total Eastern Europe	82,414	34,170	107,504	111	224,199	36.8	15.2	48.0	0.0
Total	391,568	183,168	120,883	646	696,265	56.2	26.3	17.4	0.1

(1) Oxygen figure includes Open Hearth.

(2) Processes other than Oxygen are estimated.

Table 4
(continued)

CRUDE STEEL PRODUCTION BY PROCESS - 1989

	thousand metric tons				Total	percentage of total production			
	B.O.F.	E.A.F.	O.H.	Other		B.O.F.	E.A.F.	O.H.	Other
Belgium	9,960	988			10,948	91.0	9.0	0.0	0.0
Denmark		624			624	0.0	100.0	0.0	0.0
France	13,956	5,381			19,337	72.2	27.8	0.0	0.0
F.R. Germany	33,943	7,130			41,073	82.6	17.4	0.0	0.0
Ireland		324			324	0.0	100.0	0.0	0.0
Italy	11,173	14,002		5	25,180	44.4	55.6	0.0	0.0
Luxembourg	3,721				3,721	100.0	0.0	0.0	0.0
Netherlands	5,419	262			5,681	95.4	4.6	0.0	0.0
Portugal	384	345			729	52.7	47.3	0.0	0.0
Spain	5,617	7,180			12,797	43.9	56.1	0.0	0.0
United Kingdom	13,627	5,113			18,740	72.7	27.3	0.0	0.0
E.C. Total	97,800	41,349	0	5	139,154	70.3	29.7	0.0	0.0
Austria	4,334	384			4,718	91.9	8.1	0.0	0.0
Finland	2,445	476			2,921	83.7	16.3	0.0	0.0
Norway	185	452			637	29.0	71.0	0.0	0.0
Sweden	2,610	2,082			4,692	55.6	44.4	0.0	0.0
Turkey	2,895	4,635	322		7,852	36.9	59.0	4.1	0.0
Yugoslavia	1,934	1,466	1,100		4,500	43.0	32.6	24.4	0.0
Other Western Europe	14,403	9,495	1,422	0	25,320	56.9	37.5	5.6	0.0
Total Western Europe	112,203	50,843	1,422	5	164,473	68.2	30.9	0.9	0.0
Canada (1)	10,734	4,724			15,458	69.4	30.6	0.0	0.0
United States	52,933	31,892	4,030		88,854	59.6	35.9	4.5	0.0
Japan	74,874	33,035			107,909	69.4	30.6	0.0	0.0
Australia	6,268	464			6,732	93.1	6.9	0.0	0.0
New Zealand	382	226			608	62.8	37.2	0.0	0.0
South Africa	6,111	3,335		120	9,567	63.9	34.9	0.0	1.3
Total Industrial Cts.	263,505	124,519	5,452	125	393,601	66.9	31.6	1.4	0.0
Argentina	1,955	1,732	206		3,893	50.2	44.5	5.3	0.0
Brazil	18,663	5,679	1	674	25,017	74.6	22.7	0.0	2.7
Chile	760	53			813	93.5	6.5	0.0	0.0
Mexico	2,965	4,064	821		7,850	37.8	51.8	10.5	0.0
Peru	213	188			401	53.1	46.9	0.0	0.0
Venezuela		2,899	491		3,390	0.0	85.5	14.5	0.0
India (E)	5,685	3,824	4,920		14,429	39.4	26.5	34.1	0.0
Republic of Korea	15,421	6,452			21,873	70.5	29.5	0.0	0.0
Taiwan (R.O.C.)	6,001	3,046			9,047	66.3	33.7	0.0	0.0
Total Western Cts.	315,168	152,455	11,891	799	480,314	65.6	31.7	2.5	0.2
Bulgaria	1,455	1,155	290		2,899	50.2	39.8	10.0	0.0
Czechoslovakia	7,241	2,021	6,203		15,465	46.8	13.1	40.1	0.0
German Dem. Rep.	2,388	2,385	3,042	14	7,829	30.5	30.5	38.9	0.2
Hungary	1,541	363	1,411		3,315	46.5	11.0	42.6	0.0
Poland	7,222	2,480	5,387	5	15,094	47.8	16.4	35.7	0.0
Romania (E)	6,920	3,460	4,035		14,415	48.0	24.0	28.0	0.0
U.S.S.R.	55,538	20,925	83,554	79	160,096	34.7	13.1	52.2	0.0
Total Eastern Europe	82,305	32,789	103,922	98	219,113	37.6	15.0	47.4	0.0
Total	397,473	185,244	115,813	897	699,427	56.8	26.5	16.6	0.1

(1) Oxygen figure includes Open Hearth.

Table 5

CONTINUOUSLY CAST STEEL
thousand metric tons

	1980	1981	1982	1983	1984	1985	1986	1987	1988	1989
Belgium	3,170	3,789	3,294	3,903	5,597	6,412	7,036	8,391	9,871	9,951
Denmark	538	586	542	480	545	528	632	606	650	624
France	9,561	10,918	10,769	11,218	12,708	15,168	16,094	16,475	17,969	18,156
F.R. Germany	20,162	22,319	22,214	25,654	30,294	32,208	31,404	31,898	36,325	36,875
Ireland	0	32	61	141	166	203	208	220	271	324
Italy	13,218	12,578	14,056	14,886	17,638	18,794	19,322	20,506	22,074	23,697
Luxembourg	0	265	680	794	1,044	1,117	1,282	1,238	1,252	1,246
Netherlands	313	1,159	1,350	1,610	2,220	2,155	2,258	3,302	4,171	4,949
Portugal	281	212	236	291	277	293	319	332	375	372
Spain	4,608	5,098	5,525	5,965	6,666	8,084	7,267	7,797	8,843	11,012
United Kingdom	3,059	4,958	5,341	6,986	7,858	8,620	8,903	11,294	13,356	15,031
E.C. Total	54,910	61,914	64,068	71,928	85,013	93,582	94,725	102,059	115,157	122,237
Austria	2,367	2,907	3,290	3,862	4,336	4,352	4,061	4,117	4,357	4,516
Finland	2,261	2,231	2,255	2,259	2,485	2,355	2,440	2,508	2,628	2,746
Norway	111	136	227	320	471	525	474	459	486	409
Sweden	2,077	2,517	2,965	3,354	3,744	3,880	3,858	3,842	3,967	3,862
Turkey	1,060	1,173	1,772	2,438	3,118	3,197	4,614	5,576	6,752	6,806
Yugoslavia	1,329	1,720	1,826	2,133	2,194	2,395	2,415	2,388	2,776	2,876
Other Western Europe	9,205	10,684	12,335	14,366	16,348	16,704	17,862	18,890	20,966	21,215
Total Western Europe	64,115	72,598	76,403	86,294	101,361	110,286	112,587	120,949	136,123	143,452
Canada	4,073	4,771	3,895	4,802	5,647	6,384	6,456	7,216	10,300	11,760
United States	20,611	22,247	19,616	24,652	33,266	35,527	40,882	48,339	55,549	57,565
Japan	66,271	71,843	78,377	83,819	94,097	95,940	91,113	91,916	98,367	100,857
Australia	779	992	1,118	1,398	1,701	1,792	1,800	2,713	4,568	5,386
South Africa	4,709	4,970	5,067	4,316	4,758	5,500	5,684	5,746	6,153	6,854
Total Industrial Cts.	160,558	177,421	184,476	205,281	240,830	255,429	258,522	276,879	311,059	325,874
Argentina	1,431	1,244	1,510	1,429	1,254	1,839	2,100	2,372	2,478	2,891
Brazil	5,106	4,816	5,336	6,505	7,589	8,949	9,782	10,123	12,075	13,516
Chile	15	9	4	8	11	13	19	12	15	13 E
Mexico	2,100	2,447	2,675	3,849	4,082	3,774	3,416	4,143	4,348	4,564
Venezuela	800	1,262	1,558	1,817	2,000	2,250	2,426	2,850	2,873	2,668 E
Republic of Korea	2,769	4,765	6,012	6,739	7,903	8,574	10,349	14,017	16,885	20,575
Taiwan (R.O.C.)	1,931	1,848	3,360	4,259	4,337	4,435	4,894	5,300	7,754	8,023
Qatar	455	463	488	463	472	526	500	484	520	580 E
Total Western Cts.	175,165	194,275	205,419	230,350	268,478	285,789	292,008	316,180	358,008	378,704
Bulgaria	0	0	0	197	288	273	404	377	446	450
Czechoslovakia	222	228	375	766	1,077	1,156	1,246	1,310	1,338	1,422
German Dem. Rep.	1,038	1,180	1,233	1,308	1,937	2,649	2,908	3,101	3,219	3,211
Hungary	1,359	1,290	1,243	1,420	1,757	1,698	1,937	2,023	2,263	1,842
Poland	772	605	635	653	1,663	1,660	1,820	1,889	1,874	1,162
Romania	2,379	2,690	2,927	3,280	4,366	4,127	4,549	4,848	4,509	4,924
U.S.S.R.	15,900	18,100	18,600	18,900	19,600	21,022	24,051	26,108	27,085	27,623
Total Eastern Europe	21,670	24,093	25,013	26,524	30,688	32,585	36,915	39,656	40,734	40,634
Total	196,835	218,368	230,432	256,874	299,166	318,374	328,923	355,836	398,742	419,338

E - estimate

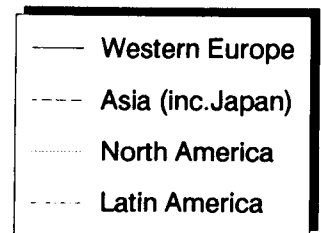
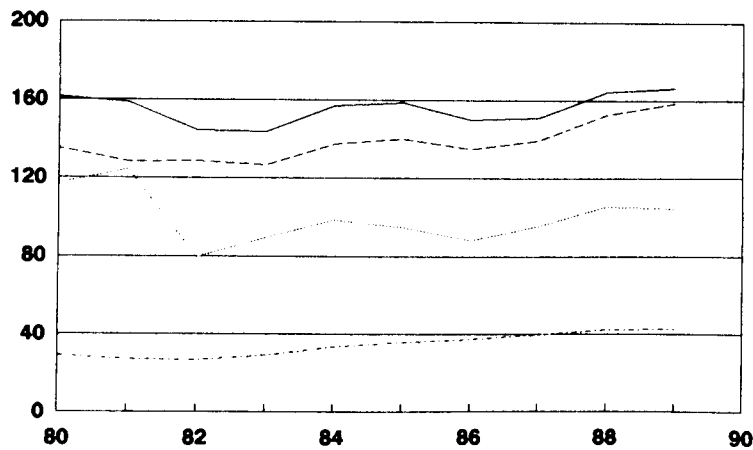
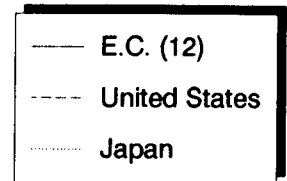
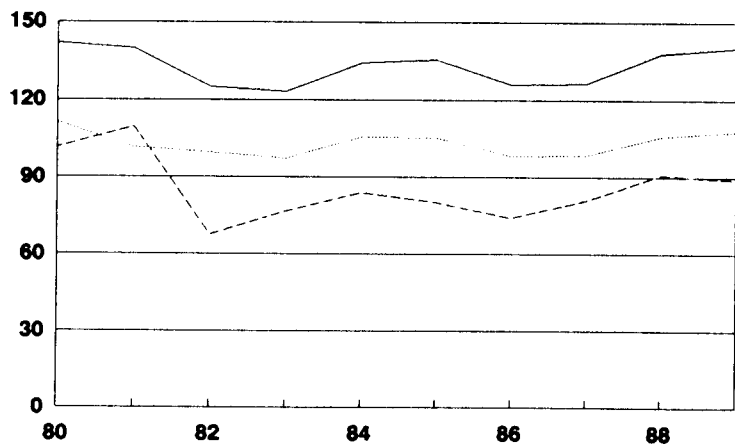
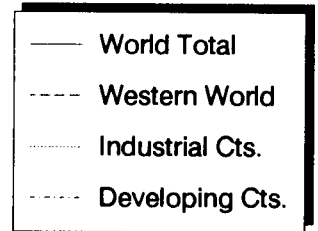
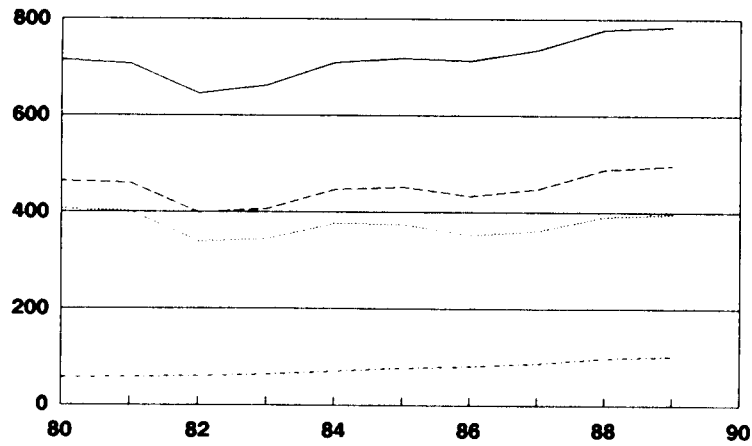
Table 5
(continued)

CONTINUOUSLY CAST STEEL
percentage of total crude steel production

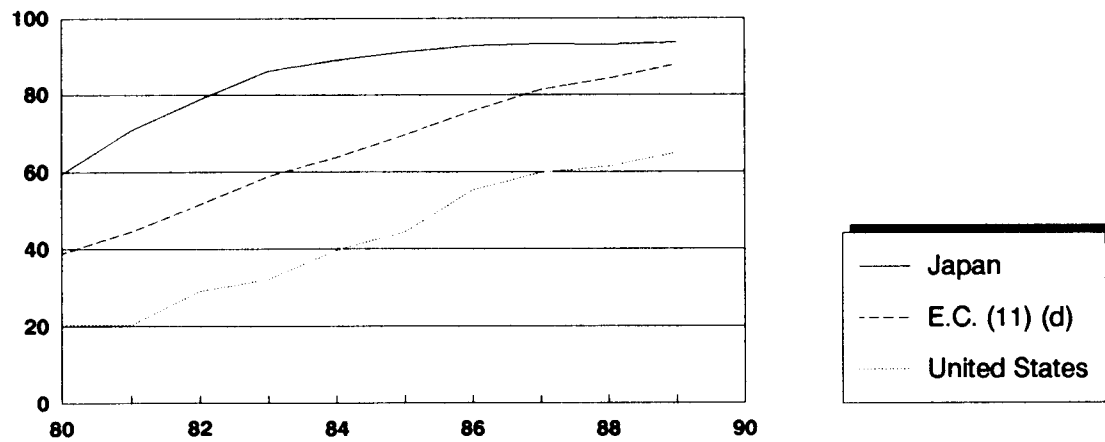
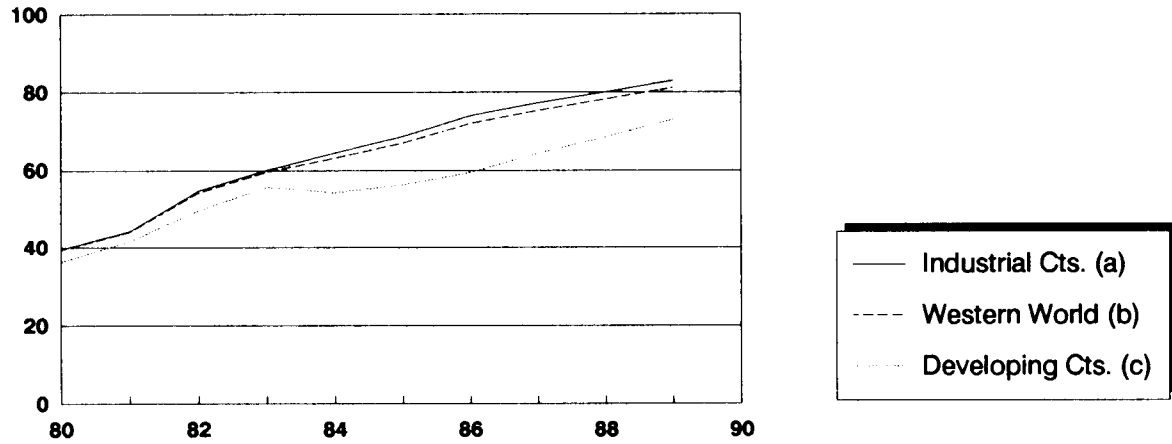
	1980	1981	1982	1983	1984	1985	1986	1987	1988	1989
Belgium	25.5	30.6	33.0	38.4	49.5	60.0	72.4	85.8	88.0	90.9
Denmark	73.3	95.8	96.8	97.4	99.5	100.0	100.0	100.0	100.0	100.0
France	41.3	51.4	58.5	63.8	66.9	80.6	90.1	93.1	94.0	93.9
F.R. Germany	46.0	53.6	61.9	71.8	76.9	79.5	84.6	88.0	88.5	89.8
Ireland	0.0	100.0	100.0	100.0	100.0	100.0	100.0	100.0	100.0	100.0
Italy	49.9	50.8	58.5	68.2	73.3	78.6	84.1	89.9	92.9	94.1
Luxembourg	0.0	7.0	19.4	24.1	26.2	28.3	34.6	37.5	34.2	33.5
Netherlands	5.9	21.2	31.0	36.0	38.7	39.1	42.7	65.0	75.6	87.1
Portugal	42.4	38.2	46.5	42.5	39.7	42.8	44.2	46.0	46.9	51.0
Spain	36.4	39.5	41.9	45.9	49.4	57.0	61.2	66.7	74.4	86.1
United Kingdom	27.1	31.8	39.0	46.6	52.0	54.8	60.5	64.9	70.5	80.2
E.C. Total	38.9	44.6	51.6	58.8	63.7	69.5	75.9	81.3	84.1	87.8
Austria	51.2	62.4	77.3	87.6	89.0	93.4	94.6	95.7	95.5	95.7
Finland	90.2	91.9	93.4	93.5	94.2	93.5	94.4	94.0	93.9	94.0
Norway	12.9	16.0	29.6	36.5	51.4	55.6	56.7	53.9	53.4	64.2
Sweden	49.0	66.8	76.0	79.7	79.6	80.6	81.8	83.6	83.0	82.3
Turkey	41.8	48.4	55.7	63.6	72.0	65.7	77.8	79.2	84.6	86.7
Yugoslavia	36.6	43.2	47.4	51.6	51.8	53.5	53.4	54.7	61.9	63.9
Other Western Europe	50.0	59.0	67.1	72.3	75.4	75.0	78.1	79.3	82.2	83.8
Total Western Europe	40.2	46.2	53.6	60.7	65.3	70.3	76.2	81.0	83.8	87.2
Canada	25.6	32.2	32.8	37.4	38.4	43.6	45.8	49.0	69.3	76.1
United States	20.3	20.3	29.0	32.1	39.6	44.4	55.2	59.8	61.3	64.8
Japan	59.5	70.7	78.7	86.3	89.1	91.1	92.7	93.3	93.1	93.5
Australia	10.3	13.0	17.5	24.6	27.0	27.1	27.0	44.5	71.5	80.0
South Africa	51.9	55.2	61.2	60.1	61.5	64.7	63.9	63.9	69.6	71.6
Total Industrial Cts.	39.6	44.4	54.9	60.0	64.5	68.7	73.9	77.2	80.0	82.9
Argentina	53.3	49.2	51.8	48.6	47.4	62.5	64.9	65.3	68.2	74.3
Brazil	33.3	36.4	41.1	44.3	41.3	43.7	46.1	45.5	49.0	54.0
Chile	2.1	1.4	0.8	1.3	1.6	1.9	2.7	1.7	1.7	1.6 E
Mexico	29.3	31.9	37.9	55.2	54.0	51.0	47.3	54.2	55.9	58.1
Venezuela	40.5	62.2	70.0	76.8	72.0	73.6	71.3	77.0	78.7	78.7 E
Republic of Korea	32.4	44.3	51.1	56.6	60.6	63.3	71.1	83.5	88.3	94.1
Taiwan (R.O.C.)	56.5	58.5	80.9	84.7	82.8	83.6	88.3	89.6	93.6	88.7
Qatar	98.7	98.7	98.6	98.7	98.7	98.7	98.6	98.4	98.7	99.1 E
Total Western Cts.	39.3	44.1	54.3	59.5	63.3	67.1	71.9	75.3	78.2	81.2
Bulgaria	0.0	0.0	0.0	7.0	10.0	9.3	13.6	12.4	15.5	15.5
Czechoslovakia	1.5	1.5	2.5	5.1	7.3	7.7	8.2	8.5	8.7	9.2
German Dem. Rep.	14.2	15.8	17.2	18.1	25.6	33.7	36.5	37.6	39.6	41.0
Hungary	36.1	35.4	33.6	39.3	46.6	46.6	52.1	55.9	63.2	55.6
Poland	4.0	3.8	4.3	4.0	10.1	10.3	10.6	11.0	11.1	7.7
Romania	18.1	20.7	22.4	26.0	30.2	29.9	31.9	32.4	31.5	34.2
U.S.S.R.	10.7	12.2	12.6	12.4	12.7	13.6	15.0	16.1	16.6	17.3
Total Eastern Europe	10.4	11.7	12.3	12.6	14.3	15.2	16.6	17.7	18.2	18.5
Total	30.1	33.8	39.6	43.0	46.9	49.7	52.4	55.2	58.5	61.1

E - estimate

Crude Steel Production
million metric tons



Continuously Cast Steel
percentage of crude steel production



Based on data available.

(a) - Excluding Greece, New Zealand, and Switzerland. The countries included accounted for 99% of crude steel production by industrialised countries in 1989.

(b) - The countries included accounted for 94% of Western World crude steel production in 1989.

(c) - The countries included accounted for 72% of crude steel production by Developing Countries.

(d) - Excluding Greece, the E.C. (11) accounted for 99% of total E.C. crude steel production in 1989.

Table 6
Argentina

TOTAL DELIVERIES OF STEEL PRODUCTS
thousand metric tons

	1979	1980	1981	1982	1983	1984	1985	1986	1987	1988
CARBON STEEL GRADES:										
Semis for Seamless Tubes										
Ingots & Semis for sale	285	238	215	163	7	18	308	459	234	
Railway Track Material	21	21	64	29	25	35	4	7	2	
Structurals and Bar Mill Products:										
Heavy Structurals	66	44	50	69	50	45	25	52	63	
Bars & Light Shapes	222	151	142	246	192	199	157	277	293	
Re-inforcing Bars (1)	627	552	516	485	476	336	273	335	382	
Total	915	747	708	800	718	580	455	664	738	
Wire Rods	58	67	77	93	194	220	328	242	218	
Hot Rolled Strip	4	11	42	86	90	41	87	55	101	
Plates	207	272	148	217	153	47	62	105	114	
Sheet and Coil:										
Hot Rolled Sheet & Coil	214	75	30	60	147	242	139	283	341	
Cold Rolled Sheet & Coil	641	527	392	524	557	527	459	734	779	
Galvanised Sheet	152	127	94	88	120	128	21	0	0	
Other Coated Sheet	7	7	10	6	8	10	1	0	0	
Total	1,014	736	526	678	832	907	620	1,017	1,120	
Tinplate & Black Plate	71	43	52	87	79	94	89	85	90	
Wheels & Axles (rolled & forged) (2)	7	8	6	5	3	4	5	26	25	
Steel Tubes and Fittings (3)										
Drawn Wire	157	107	92	117	131	132	92	118	154	
Cold Rolled Strip	17	23	44	29	32	20	34	55	47	
Cold Drawn Bars (4)										
Total Carbon Steels	2,756	2,273	1,974	2,304	2,264	2,098	2,084	3,157	3,261	
Special Steel Grades (all products)	528	413	407	434	478	475	458	472*	557*	
Total Steel Products	3,284	2,686	2,381	2,738	2,742	2,573	2,542	3,157	3,261	

(1) Includes concrete reinforcing wire.

(2) Includes other forgings for railway wagons.

From 1986 read Forgings

* - not included in totals to avoid double counting.

(3) Welded tubes included in plates, sheets and cold rolled strip.

(4) Included in special steels.

For 1988 see Table 6A

Table 6
Belgium

TOTAL DELIVERIES OF STEEL PRODUCTS
thousand metric tons

	1980	1981	1982	1983	1984	1985	1986	1987	1988	1989
CARBON STEEL GRADES:										
Semis for Seamless Tubes	0	0	0	0	0	0	0	0	0	0
Ingots & Semis for sale	470	442	472	712	646	438	350	449	280	254
Railway Track Material	0	0	0	0	0	0	0	0	0	0
Structurals and Bar Mill Products:										
Heavy Structurals	964	821	462	519	488	529	491	433	506	516
Bars & Light Shapes	524	392	282	320	264	223	199	119	153	217
Re-inforcing Bars	404	261	262	202	205	200	138	125	80	20
Total	1,892	1,474	1,006	1,041	957	952	828	677	739	753
Wire Rods	648	653	572	503	570	607	530	465	451	420
Hot Rolled Strip	27	65	64	58	84	93	84	104	59	17
Plates	1,488	1,638	1,341	1,084	1,131	1,194	961	977	1,107	1,140
Sheet and Coil:										
Hot Rolled Sheet & Coil	2,221	2,412	2,002	2,147	2,541	2,584	2,430	2,662	3,057	2,993
Cold Rolled Sheet & Coil	2,020	1,906	1,542	1,444	1,692	1,888	1,856	1,966	2,246	2,287
Electrical Sheet	148	120	79	100	95	101	96	94	105	75
Galvanised Sheet (1)	700	715	626	679	734	747	724	741	971	1,139
Other Coated Sheet	0	0	0	0	0	0	0	0	0	0
Total	5,089	5,153	4,249	4,370	5,062	5,320	5,106	5,463	6,379	6,493
Tinplate & Black Plate	372	351	418	473	572	531	479	495	445	380
Wheels & Axles (rolled & forged)										
Steel Tubes and Fittings										
Drawn Wire										
Cold Rolled Strip										
Cold Drawn Bars										
Total Carbon Steels	9,986	9,776	8,122	8,241	9,022	9,135	8,338	8,630	9,460	9,457
Special Steel Grades (all products)	668	472	478	510	640	539	470	503	744	680
Total Steel Products	10,654	10,248	8,600	8,751	9,662	9,674	8,808	9,133	10,204	10,137

(1) Other Coated Sheet included with Galvanised Sheet.

Excluding tonnages of coils re-exported after sub-contract rolling for other EC steelworks.

Table 6
Brazil

TOTAL DELIVERIES OF STEEL PRODUCTS

thousand metric tons

	1979	1980	1981	1982	1983	1984	1985	1986	1987	1988
CARBON STEEL GRADES:										
Semis for Seamless Tubes	0	0	0	0	0	0	0	0	0	0
Ingots & Semis for sale	1,004	919	536	400	703	2,530	3,626	4,322	5,482	
Railway Track Material	108	113	57	104	76	88	110	96	57	
Structurals and Bar Mill Products:										
Heavy Structurals	212	243	219	162	129	142	176	555	559	
Bars & Light Shapes	698	728	521	537	645	819	828	1,375	1,121	
Re-inforcing Bars	1,587	1,682	1,796	1,722	1,794	2,218	2,393	2,225	2,089	
Total	2,497	2,653	2,536	2,421	2,568	3,179	3,397	4,155	3,769	
Wire Rods	256	307	383	420	429	484	796	1,942	1,992	
Hot Rolled Strip										
Plates	1,975	2,337	2,018	1,636	1,773	2,107	2,580	2,333	1,833	
Sheet and Coil:										
Hot Rolled Sheet & Coil	1,397	1,607	1,242	1,701	2,607	2,702	2,428	2,867	2,598	
Cold Rolled Sheet & Coil	1,719	1,920	1,554	1,703	1,987	2,015	1,964	2,846	2,918	
Electrical Sheet	21	37	29	45	41	53	62			
Galvanised Sheet	182	191	169	182	166	193	305	925	1,000	
Other Coated Sheet	39	31	49	63	93	123	137			
Total	3,358	3,786	3,043	3,694	4,894	5,086	4,896	6,638	6,516	
Tinplate & Black Plate	588	652	406	541	476	517	474			
Wheels & Axles (rolled & forged)										
Steel Tubes and Fittings	224	276	305	281	178	294	255	348	336	
Drawn Wire	35	1,012	839	920	798	923	978			
Cold Rolled Strip										
Cold Drawn Bars	45	67	46	41	43	70	51			
Total Carbon Steels	10,090	12,122	10,169	10,458	11,938	15,278	17,163	19,834	19,985	
Special Steel Grades (all products)	832	980	814	753	723	1,046	1,242			
Total Steel Products	10,922	13,102	10,983	11,211	12,661	16,324	18,405	19,834	19,985	

For 1985 and 1986, reporting basis has been changed; major categories of rolled products only are shown, and special steels are not separately identified. Tubes are seamless only.

For 1988 and 1989 see Table 6A

Table 6
Canada

TOTAL DELIVERIES OF STEEL PRODUCTS
thousand metric tons

	1979	1980	1981	1982	1983	1984	1985	1986	1987	1988
CARBON STEEL GRADES:										
Semis for Seamless Tubes	266	306	315	191	128	223	228	62	167	...
Ingots & Semis for sale	234	508	682	334	620	316	141	208	185	...
Railway Track Material	417	862	907	469	509	589	581	588	638	...
Structurals and Bar Mill Products:										
Heavy Structural	834	416	355	216	260	294	320	329	368	...
Bars & Light Shapes	1,428	1,164	1,188	868	978	1,262	1,314	1,281	1,410	...
Re-inforcing Bars	530	765	681	543	526	475	564	548	656	...
Total	2,792	2,345	2,224	1,627	1,764	2,031	2,198	2,158	2,434	...
Wire Rods	1,141	1,237	987	898	1,025	1,088	1,048	1,139	1,163	...
Hot Rolled Strip (1)										
Plates	1,701	1,773	1,803	1,123	1,015	1,483	1,476	1,403	1,807	...
Sheet and Coil:										
Hot Rolled Sheet & Coil	2,557	2,320	2,274	1,999	2,113	2,764	2,740	2,840	2,945	...
Cold Rolled Sheet & Coil	1,937	1,849	1,761	1,710	1,784	1,870	1,918	1,889	1,921	...
Electrical Sheet (2)										
Galvanised Sheet	1,066	997	951	930	950	1,072	1,212	1,244	1,346	...
Other Coated Sheet (2)										
Total	5,560	5,166	4,986	4,639	4,847	5,706	5,870	5,973	6,212	...
Tinplate & Black Plate (2)										
Wheels & Axles (rolled & forged)										
Steel Tubes and Fittings										
Drawn Wire										
Cold Rolled Strip (2)										
Cold Drawn Bars	119	98	95	68	90	123	119	131	143	...
Total Carbon Steels	12,230	12,295	11,999	9,349	9,998	11,559	11,661	11,662	12,749	...
Special Steel Grades (all products) (3)										
Total Steel Products	12,230	12,295	11,999	9,349	9,998	11,559	11,661	11,662	12,749	...

- (1) Included with Hot Rolled Sheet and Coil.
(2) Included with Cold Rolled Sheet and Coil.
(3) Included with Carbon Steel grades.

Table 6
France

TOTAL DELIVERIES OF STEEL PRODUCTS
thousand metric tons

	1979	1980	1981	1982	1983	1984	1985	1986	1987	1988
CARBON STEEL GRADES:										
Semis for Seamless Tubes	498	491	343	285	165	140	119	68	31	
Ingots & Semis for sale	260	334	190	269	404	528	813	671	624	
Railway Track Material	322	314	254	254	191	212	217	248	150	
Structurals and Bar Mill Products:										
Heavy Structurals	987	983	938	768	769	727	698	680	671	
Bars & Light Shapes	962	1,000	790	760	741	759	729	631	630	
Re-inforcing Bars	977	738	719	560	548	532	555	479	484	
Total	2,926	2,721	2,447	2,088	2,058	2,018	1,982	1,790	1,785	
Wire Rods	2,143	2,084	2,022	1,564	1,638	1,749	1,938	1,744	1,670	
Hot Rolled Strip	1,192	1,029	836	682	621	552	493	504	371	
Plates	2,112	2,455	2,564	1,540	1,590	1,618	1,675	1,504	1,638	
Sheet and Coil:										
Hot Rolled Sheet & Coil	1,425	1,320	1,462	1,079	1,429	1,611	1,519	1,701	1,850	
Cold Rolled Sheet & Coil	3,372	3,252	3,000	2,189	2,291	2,322	2,441	2,189	2,167	
Electrical Sheet	195	254	211	198	248	235	236	226	226	
Galvanised Sheet	1,101	1,152	1,189	1,141	1,264	1,496	1,597	1,793	1,956	
Other Coated Sheet (1)										
Total	6,093	5,978	5,862	4,607	5,232	5,664	5,793	5,909	6,199	
Tinplate & Black Plate	1,108	1,143	1,008	880	944	965	974	1,016	982	
Wheels & Axles (rolled & forged)										
Steel Tubes and Fittings										
Drawn Wire										
Cold Rolled Strip										
Cold Drawn Bars										
Total Carbon Steels	16,654	16,549	15,526	12,169	12,843	13,446	14,004	13,454	13,450	
Special Steel Grades (all products)	2,944	3,011	2,862	1,969	2,137	2,658	2,450	2,246	2,318	
Total Steel Products	19,598	19,560	18,388	14,138	14,980	16,104	16,454	15,700	15,768	

(1) Included with Galvanised Sheet.

For 1988 and 1989 see Table 6A

Table 6
F.R. Germany

TOTAL DELIVERIES OF STEEL PRODUCTS
thousand metric tons

	1979	1980	1981	1982	1983	1984	1985	1986	1987	1988
CARBON STEEL GRADES:										
Semis for Seamless Tubes	971	890								
Ingots & Semis for sale	5,610	5,603	6,274	5,241	4,755	6,128	6,698	5,455	5,072	
Railway Track Material	531	456	475	367	306	342	369	285	263	
Structurals and Bar Mill Products:										
Heavy Structural	2,022	2,209	1,982	1,520	1,524	1,435	1,543	1,463	1,437	
Bars & Light Shapes	3,431	3,186	3,714	3,087	3,035	3,097	3,098	2,890	2,778	
Re-inforcing Bars	1,403	1,246								
Total	6,856	6,641	5,696	4,607	4,559	4,532	4,641	4,353	4,215	
Wire Rods	4,016	3,626	3,234	2,688	2,849	3,067	3,264	3,254	3,352	
Hot Rolled Strip	2,654	2,516	2,334	2,084	2,104	2,093	2,065	2,007	1,956	
Plates	7,661	7,194	5,232	4,415	4,025	4,396	4,831	4,353	3,752	
Sheet and Coil:										
Hot Rolled Sheet & Coil	1,562	1,774	4,467	3,516	3,734	4,699	4,485	4,408	4,777	
Cold Rolled Sheet & Coil	5,619	5,478	5,292	4,803	4,924	4,964	5,051	4,742	5,126	
Electrical Sheet	361	372								
Galvanised Sheet	1,724	1,751	1,808	1,816	1,912	2,149	2,201	2,268	2,627	
Other Coated Sheet										
Total	9,266	9,375	11,567	10,135	10,570	11,812	11,737	11,418	12,530	
Tinplate & Black Plate	858	963	1,017	1,026	1,078	999	1,019	994	1,068	
Wheels & Axles (rolled & forged)										
Steel Tubes and Fittings										
Drawn Wire										
Cold Rolled Strip										
Cold Drawn Bars										
Total Carbon Steels	38,423	37,264	35,829	30,563	30,246	33,369	34,624	32,119	32,208	
Special Steel Grades (all products)										
Total Steel Products	38,423	37,264	35,829	30,563	30,246	33,369	34,624	32,119	32,208	

Since 1981, semis for tubes are included with Ingots; reinforcing bars are included with other bars; electrical sheet is included in cold rolled sheet; and the figures include all grades. Galvanised sheet includes other coated sheet.

For 1988 and 1989 see Table 6A

Table 6

TOTAL DELIVERIES OF STEEL PRODUCTS

	thousand metric tons									
	1980	1981	1982	1983	1984	1985	1986	1987	1988*	1989*
CARBON STEEL GRADES:										
Semis for Seamless Tubes	725	645	676	523	606	568	545	583	675	676
Ingots & Semis for sale	418	850	825	871	616	658	473	384
Railway Track Material	204	214	230	217	275	265	260	291	317	293
Structurals and Bar Mill Products:										
Heavy Structurals	855	1,058	883	966	750	646	653	685	734	836
Bars & Light Shapes	2,830	2,773	2,381	2,592	2,260	2,563	2,349	2,546	3,411	3,596
Re-inforcing Bars	5,434	4,680	3,527	3,359	3,474	3,442	3,884	4,187	4,298	4,955
Total	9,119	8,511	6,791	6,917	6,484	6,651	6,886	7,418	8,443	9,387
Wire Rods	1,399	1,317	1,500	1,530	1,750	1,815	1,819	1,811	2,671	2,831
Hot Rolled Strip	809	732	552	438	491	322	342	376	407	403
Plates	2,694	3,074	2,761	2,477	2,841	3,079	2,359	2,208	1,681	1,464
Sheet and Coil:										
Hot Rolled Sheet & Coil	1,177	1,305	1,357	1,423	1,447	1,958	1,773	1,787	3,496	3,748
Cold Rolled Sheet & Coil	2,314	2,345	2,229	2,172	2,149	1,881	2,232	2,099	4,319	4,409
Electrical Sheet	201	167	175	196	205	199	201	189	(194)	(206)
Galvanised Sheet	535	617	595	653	708	746	846	929	(1312)	(1338)
Other Coated Sheet	107	140	139	64	71	105	157	270
Total	4,334	4,574	4,495	4,508	4,580	4,889	5,209	5,274	7,815	8,157
Tinplate & Black Plate	409	414	427	501	499	476	427	529	513	580
Wheels & Axles (rolled & forged)	(61)	(51)	(52)	(46)	(39)	(29)	(28)	(33)
Steel Tubes and Fittings	(3436)	(4299)	(3713)	(3663)	(3837)	(3583)	(3324)	(3515)	(4549)	...
Drawn Wire	(856)	(638)	(776)	(828)	(849)	(912)	(909)	(985)	(926)	...
Cold Rolled Strip	(504)	(444)	(461)	(477)	(490)	(459)	(514)	(556)	(617)	...
Cold Drawn Bars	(671)	(661)	(563)	(592)	(708)	(753)	(782)	(841)	(852)	...
Total Carbon Steels	20,111	20,331	18,257	17,982	18,142	18,723	18,320	18,874	22,522	23,791
Special Steel Grades (all products) (1)	3,702	3,827	3,572	3,009	3,649	3,448	3,255	3,192
Total Steel Products	23,813	24,158	21,829	20,991	21,791	22,171	21,575	22,066	22,522	23,791

* - Production not deliveries.

The figures shown in parentheses are not added into totals to avoid double-counting; they cover all grades of products concerned.

(1) ECSC steel products only, i.e. excluding products shown in brackets.

Table 6
Japan

TOTAL DELIVERIES OF STEEL PRODUCTS
thousand metric tons

	1979	1980	1981	1982	1983	1984	1985	1986	1987	1988
CARBON STEEL GRADES:										
Semis for Seamless Tubes										
Ingots & Semis for sale	293	271	252	221	233	270	238	321	232	
Railway Track Material	545	518	436	496	450	614	596	464	417	
Structurals and Bar Mill Products:										
Heavy Structurals	7,376	7,424	7,519	7,515	7,118	7,409	7,040	6,289	6,902	
Bars & Light Shapes	19,023	18,410	15,969	16,496	16,667	16,935	18,391	17,630	17,777	
Re-inforcing Bars (1)										
Total	26,399	25,834	23,488	24,011	23,785	24,344	25,431	23,919	24,679	
Wire Rods	5,248	5,367	4,096	3,729	4,257	4,562	4,435	4,341	3,973	
Hot Rolled Strip (2)										
Plates	10,762	11,232	10,504	9,596	8,558	9,828	9,826	8,065	7,730	
Sheet and Coil:										
Hot Rolled Sheet & Coil	11,675	11,111	8,829	8,565	9,290	9,174	8,776	8,068	7,824	
Cold Rolled Sheet & Coil	12,393	12,648	11,470	10,962	11,488	11,698	11,549	11,086	10,880	
Electrical Sheet	1,220	1,025	947	1,021	1,181	1,301	1,265	1,301	1,494	
Galvanised Sheet	6,519	6,562	5,940	6,205	6,810	7,709	8,139	8,655	9,892	
Other Coated Sheet	1,119	1,168	1,149	1,186	1,509	1,824	1,875	1,863	2,010	
Total	32,926	32,514	28,335	27,939	30,278	31,706	31,604	30,973	32,100	
Tinplate & Black Plate	1,865	1,886	1,673	1,626	1,608	1,619	1,577	1,525	1,689	
Wheels & Axles (rolled & forged)	97	102	78	65	96	69	54	43	63	
Steel Tubes and Fittings	9,516	9,582	9,563	8,628	7,446	8,281	8,273	7,858	7,116	
Drawn Wire										
Cold Rolled Strip (3)										
Cold Drawn Bars										
Total Carbon Steels	87,651	87,306	78,425	76,311	76,711	81,293	82,034	77,509	77,999	
Special Steel Grades (all products)	12,483	12,915	13,546	13,976	13,430	15,456	16,421	15,094	13,740	
Total Steel Products	100,134	100,221	91,971	90,287	90,141	96,749	98,455	92,603	91,739	

- (1) Re-inforcing bars included with Bars & Light Shapes.
(2) Hot rolled strip included with Hot Rolled Sheet & Coil.
(3) Cold rolled strip included with Cold Rolled Sheet & Coil.

For 1988 and 1989 see Table 6A

Table 6
Republic of Korea

TOTAL DELIVERIES OF STEEL PRODUCTS *
thousand metric tons

	1979	1980	1981	1982	1983	1984	1985	1986	1987	1988
CARBON STEEL GRADES										
Semis for Seamless Tubes										
Ingots & Semis for sale										
Railway Track Material	35	27	53	49	75	111	97	102		
Structurals and Bar Mill Products:										
Heavy Structurals										
Bars & Light Shapes (1)	779	637	846	1,087	1,219	1,398	1,539	1,912		
Re-inforcing Bars	1,582	1,986	1,808	2,351	2,756	3,056	3,218	3,591		
Total	2,361	2,623	2,654	3,438	3,975	4,454	4,757	5,503		
Wire Rods	414	554	587	639	671	715	999	1,083		
Hot Rolled Strip										
Plates	1,433	1,496	1,765	1,812	1,845	1,975	2,016	2,129		
Sheet and Coil:										
Hot Rolled Sheet & Coil (2)	494	582	1,856	2,006	1,855	1,969	1,849	2,294		
Cold Rolled Sheet & Coil										
Electrical Sheet										
Galvanised Sheet	183	190	307	333	425	485	511	603		
Other Coated Sheet	1,245	1,059	1,196	1,036	1,307	1,506	1,460	1,509		
Total	1,922	1,831	3,359	3,375	3,587	3,960	3,820	4,406		
Tinplate & Black Plate	68	71	84	101	124	149	148	177		
Wheels & Axles (rolled & forged)										
Steel Tubes and Fittings	1,096	1,122	1,424	1,297	1,666	1,872	1,881	1,662		
Drawn Wire @	210	198	258	308	398	520	492	567		
Cold Rolled Strip										
Cold Drawn Bars										
Total Carbon Steels	7,329	7,724	9,926	10,711	11,943	13,236	13,718	15,062		
Special Steel Grades (all products)										
Total Steel Products	7,329	7,724	9,926	10,711	11,943	13,236	13,718	15,062		

* - Production, not deliveries.

@ - not included in totals to avoid double counting.

(1) - includes all sections

(2) - includes Hot Rolled Strip

For 1987-9 see Table 6A

Table 6
Luxembourg

TOTAL DELIVERIES OF STEEL PRODUCTS
thousand metric tons

	1980	1981	1982	1983	1984	1985	1986	1987	1988	1989*
CARBON STEEL GRADES										
Semis for Seamless Tubes										
Ingots & Semis for sale	1,005	1,191	1,231	898	908	1,135	671	523	521	573
Railway Track Material	200	200	169	106	124	137	140	116	114	118
Structurals and Bar Mill Products:										
Heavy Structural	1,038	1,050	931	825	832	850	902	856	1,013	1,350
Bars & Light Shapes	423	287	391	316	353	371	347	290	350	344
Re-inforcing Bars	434	366	319	352	399	423	325	301	301	294
Total	1,895	1,703	1,641	1,493	1,584	1,644	1,574	1,447	1,664	1,988
Wire Rods	348	311	268	290	325	304	327	282	251	524
Hot Rolled Strip	727	574	464	465	338	365	299	283	338	318
Plates	186	208	180	179	1					
Sheet and Coil:										
Hot Rolled Sheet & Coil					264	251	195	242	295	
Cold Rolled Sheet & Coil	203	185	166	154	150	183		148	151	351
Electrical Sheet										
Galvanised Sheet	61	65	72	67	66	65	65	79	78	
Other Coated Sheet				43	183	196	232	278	373	
Total	264	250	238	264	663	695	492	747	897	351
Tinplate & Black Plate										
Wheels & Axles (rolled & forged)										
Steel Tubes and Fittings										
Drawn Wire										
Cold Rolled Strip						27	33	29	27	
Cold Drawn Bars										
Total Carbon Steels	4,625	4,437	4,191	3,695	3,943	4,307	3,536	3,427	3,812	3,983
Special Steel Grades (all products)	147	51	51	51	44	37	52	61	87	
Total Steel Products	4,772	4,488	4,242	3,746	3,987	4,344	3,588	3,488	3,899	3,983

* - Production not deliveries.

Table 6
Netherlands

TOTAL DELIVERIES OF STEEL PRODUCTS *

thousand metric tons

	1980	1981	1982	1983	1984	1985	1986	1987	1988	1989
CARBON STEEL GRADES:										
Semis for Seamless Tubes	0	0	0	0	0	0	0	0	0	0
Ingots & Semis for sale (1)	880	986	614	849	1,308	1,285	1,335	1,353	1,531	1,131
Railway Track Material	0	0	0	0	0	0	0	0	0	0
Structurals and Bar Mill Products:										
Heavy Structurals	0	0	0	0	0	0	0	0	0	0
Bars & Light Shapes	0	0	0	0	0	0	0	0	0	0
Re-inforcing Bars	253	234	180	215	226	262	258	284	318	326
Total	253	234	180	215	226	262	258	284	318	326
Wire Rods	362	302	269	222	234	228	244	244	254	272
Hot Rolled Strip	232	237	203	230	230	254	257	245	283	297
Plates	309	303	248	214	280	256	237	173	237	275
Sheet and Coil:										
Hot Rolled Sheet & Coil	469	638	641	591	708	703	591	649	611	779
Cold Rolled Sheet & Coil	1,570	1,602	1,484	1,490	1,546	1,464	1,427	1,448	1,563	1,663
Electrical Sheet	0	0	0	0	0	0	0	0	0	0
Galvanised Sheet	0	0	0	0	0	0	0	1	102	140
Other Coated Sheet	0	0	0	0	0	0	0	0	0	0
Total	2,039	2,240	2,125	2,081	2,254	2,167	2,018	2,098	2,276	2,582
Tinplate & Black Plate	504	513	516	525	566	533	484	498	525	546
Wheels & Axles (rolled & forged)										
Steel Tubes and Fittings										
Drawn Wire										
Cold Rolled Strip										
Cold Drawn Bars										
Total Carbon Steels	5,058	5,310	4,834	4,837	5,802	5,510	5,367	5,396	5,940	5,957
Special Steel Grades (all products)										
Total Steel Products	5,058	5,310	4,834	4,837	5,802	5,510	5,367	5,396	5,940	5,957

* - Production, not deliveries.

(1) Exports.

Table 6
Portugal

TOTAL DELIVERIES OF STEEL PRODUCTS
thousand metric tons

	1979	1980	1981	1982	1983	1984	1985	1986	1987	1988
CARBON STEEL GRADES:										
Semis for Seamless Tubes	0	0	0	0	0	0	0	0	0	0
Ingots & Semis for sale	9	5	2	2	13	3	0	9	1	
Railway Track Material	1	3	3	8	3	0	0	3	7	
Structurals and Bar Mill Products:										
Heavy Structurals	16	17	25	27	16	19	27	23	21	
Bars & Light Shapes	81	91	91	103	74	85	91	86	108	
Re-inforcing Bars	334	374	382	399	331	312	262	316	402	
Total	431	482	498	529	421	416	380	425	531	
Wire Rods	88	95	90	86	126	145	207	166	136	
Hot Rolled Strip	0	0	0	0	0	0	0	0	0	
Plates	0	0	0	0	0	0	0	0	0	
Sheet and Coil:										
Hot Rolled Sheet & Coil	0	0	0	0	0	0	0	0	0	
Cold Rolled Sheet & Coil	62	80	61	58	54	56	29	20	52	
Electrical Sheet	0	0	0	0	0	0	0	0	0	
Galvanised Sheet	42	38	36	36	36	62	88	68	87	
Other Coated Sheet	0	0	0	0	0	0	0	0	0	
Total	104	118	97	94	90	118	117	88	139	
Tinplate & Black Plate	61	70	54	65	62	69	56	48	59	
Wheels & Axles (rolled & forged)										
Steel Tubes and Fittings										
Drawn Wire										
Cold Rolled Strip										
Cold Drawn Bars										
Total Carbon Steels	694	773	744	784	715	751	760	739	873	
Special Steel Grades (all products)	0	0	0	0	0	0	0	0	0	
Total Steel Products	694	773	744	784	715	751	760	739	873	

For 1988 and 1989 see Table 6A

Table 6
Spain

TOTAL DELIVERIES OF STEEL PRODUCTS
thousand metric tons

	1980	1981	1982	1983	1984	1985	1986	1987	1988*	1989*
CARBON STEEL GRADES:										
Semis for Seamless Tubes	398	406	443	385	530	535	402	367	289	300
Ingots & Semis for sale	632	612	786	802	683	1,158	791	811
Railway Track Material	89	118	98	97	85	57	40	52	82	69
Structurals and Bar Mill Products:										
Heavy Structurals	1,409	1,563	1,348	1,423	1,393	1,558	1,250	1,252	1,379	1,379
Bars & Light Shapes	1,633	1,545	1,452	1,528	1,609	1,517	1,343	1,349	1,473	1,304
Re-inforcing Bars	1,847	2,177	2,226	2,201	2,869	2,976	2,176	2,229	2,125	2,186
Total	4,889	5,285	5,026	5,152	5,871	6,051	4,769	4,830	4,977	4,869
Wire Rods	553	525	662	723	968	958	1,081	1,175	1,112	1,204
Hot Rolled Strip	278	204	216	223	250	297	320	304	407	385
Plates	1,027	1,012	749	608	639	576	553	587	671	716
Sheet and Coil:										
Hot Rolled Sheet & Coil	744	769	407	800	992	916	562	818	973	1,199
Cold Rolled Sheet & Coil	1,082	1,092	1,213	1,263	1,197	1,292	1,288	1,320	2,293	2,546
Electrical Sheet	48	26	25	20	31	33	17	20	0	0
Galvanised Sheet (1)	282	328	347	374	405	351	383	378	538	669
Other Coated Sheet	24	9	9	11	10	10	29	38	0	0
Total	2,180	2,224	2,001	2,468	2,635	2,602	2,279	2,574	3,266	3,745
Tinplate & Black Plate (1)	346	402	436	434	528	392	415	402	404	449
Wheels & Axles (rolled & forged)	26	31	25	19	17	22	0	0	0	0
Steel Tubes and Fittings									971	1,053
Drawn Wire										
Cold Rolled Strip									221	232
Cold Drawn Bars										
Total Carbon Steels	10,418	10,819	10,442	10,911	12,206	12,648	10,650	11,102	11,996	12,573
Special Steel Grades (all products) (1)										
Total Steel Products	10,418	10,819	10,442	10,911	12,206	12,648	10,650	11,102	11,996	12,573

* - Production not deliveries.

(1) For 1988 and 1989 only, not included in totals to avoid double counting.

(2) Included above.

Table 6
Taiwan (R.O.C.)

TOTAL DELIVERIES OF STEEL PRODUCTS *
thousand metric tons

	1980	1981	1982	1983	1984	1985	1986	1987	1988	1989
CARBON STEEL GRADES										
Semis for Seamless Tubes										
Ingots & Semis for sale										
Railway Track Material	7	4	5	8						
Structurals and Bar Mill Products:										
Heavy Structurals										
Bars & Light Shapes	722	550	548	748	754	869	952	1,090	1,153	1,535
Re-inforcing Bars	1,842	1,759	1,852	1,709	2,026	1,532	1,624	1,773	1,999	3,066
Total	2,564	2,309	2,400	2,457	2,780	2,401	2,576	2,863	3,152	4,601
Wire Rods	492	484	513	608	676	761	922	816	760	721
Hot Rolled Strip										
Plates	588	598	673	579	535	626	678	755	773	759
Sheet and Coil:										
Hot Rolled Sheet & Coil			339	1,209	1,220	1,204	1,172	1,070	1,878	2,316
Cold Rolled Sheet & Coil			88	483	569	534	951	1,106	1,589	1,569
Electrical Sheet										
Galvanised Sheet @	34	26	24	12	12	12	13	13	32	137
Other Coated Sheet										
Total			427	1,692	1,789	1,738	2,123	2,176	3,467	3,885
Tinplate & Black Plate @	68	57	31	41	50	56	36	47	113	87
Wheels & Axles (rolled & forged)										
Steel Tubes and Fittings										
Drawn Wire										
Cold Rolled Strip										
Cold Drawn Bars										
Total Carbon Steels	3,651	3,395	4,018	5,344	5,780	5,526	6,299	6,610	8,152	9,966
Special Steel Grades (all products)										
Total Steel Products	3,651	3,395	4,018	5,344	5,780	5,526	6,299	6,610	8,152	9,966

* - Production, not deliveries.

@ - not added into totals to avoid double counting.

Some of the above products are re-rolled material.

Table 6
United Kingdom

TOTAL DELIVERIES OF STEEL PRODUCTS
(thousand metric tons)

	1979	1980	1981	1982	1983	1984	1985	1986	1987	1988
CARBON STEEL GRADES:										
Semis for Seamless Tubes	3	2	13	1				3	6	
Ingots & Semis for sale	630	392	379	476	667	477	668	1,071	1,594	
Railway Track Material	259	161	226	221	262	232	216	174	237	
Structurals and Bar Mill Products:										
Heavy Structurals	1,831	1,314	1,789	1,570	1,551	1,417	1,643	1,705	1,945	
Bars & Light Shapes	1,503	977	956	809	769	803	814	754	782	
Re-inforcing Bars	1,102	781	788	723	823	811	937	903	950	
Total	4,436	3,072	3,533	3,102	3,143	3,031	3,394	3,362	3,677	
Wire Rods	1,452	839	959	795	857	957	948	933	1,013	
Hot Rolled Strip	345	175	165	171	205	215	209	189	216	
Plates	2,220	1,386	1,701	1,599	1,495	1,516	1,541	1,373	1,555	
Sheet and Coil: (1)										
Hot Rolled Sheet & Coil	223	1,325	2,198	2,014	2,286	2,353	2,384	2,473	2,798	
Cold Rolled Sheet & Coil	1,435									
Electrical Sheet	198									
Galvanised Sheet	513									
Other Coated Sheet	353									
Total	2,722	1,325	2,198	2,014	2,286	2,353	2,384	2,473	2,798	
Tinplate & Black Plate	1,152	624	864	911	938	967	910	940	1,074	
Wheels & Axles (rolled & forged)	48									
Steel Tubes and Fittings	1,200	928	1,110	1,085	1,072	1,222	1,154	1,090	1,182	
Drawn Wire										
Cold Rolled Strip	405	291	286	277	275	287	288	286	312	
Cold Drawn Bars	423	304	287	257	257	304	280	271	276	
Total Carbon Steels	15,295	9,499	11,721	10,909	11,457	11,561	11,992	12,165	13,940	
Special Steel Grades (all products)	1,343	892	968	929	805	1,003	1,082	976	1,057	
Total Steel Products	16,638	10,391	12,689	11,838	12,262	12,564	13,074	13,141	14,997	

Reporting basis changed from 1980; figures for 1979 are not comparable.
(1) No breakdown available.

For 1988 and 1989 see Table 6A

Table 6
United States

TOTAL DELIVERIES OF STEEL PRODUCTS
(thousand metric tons)

All Grades	1980	1981	1982	1983	1984	1985	1986	1987	1988	1989
A1 Solids for Seamless Tubes
A2 Ingots and Semis	2,408	2,417	1,164	910	1,195	1,255	1,353	1,465	1,748	1,890
B Railway Track Material	1,311	1,142	611	736	1,041	749	510	388	558	510
C1 Heavy Sections	4,724	4,727	3,232	3,286	3,770	4,263	4,108	4,644	4,726	4,859
C2 Light Sections	862	1,336	860	971	1,074	1,206	826	1,080	1,246	1,194
C3 Reinforcing Bars	4,249	4,184	3,673	3,878	4,021	3,925	3,900	4,462	4,619	4,550
C4 Other Hot Rolled Bars	5,408	6,251	4,316	4,653	5,507	5,169	5,124	5,487	5,860	5,716
C5 Wire Rods	2,439	2,758	2,187	2,592	2,803	2,687	3,143	3,484	3,672	3,768
C6 Drawn Wire (a)	1,604	1,647	1,187	1,233	1,109	1,031	980	1,002	973	909
C7 Cold Finished Bars	1,438	1,480	921	1,070	1,346	1,139	1,140	1,235	1,360	1,335
C Total Long Products	20,723	22,382	16,376	17,682	19,631	19,419	19,221	21,393	22,456	22,331
D1 Hot Rolled Strip	607	599	452	574	590	532	576	596	1,091	984
D2 Hot Rolled Wide Coils (>3mm)
D3 Hot Rolled Wide Coils (<3mm)
D4 Hot Rolled Plates (>3mm) (b)	7,330	6,750	3,761	3,462	3,936	3,926	3,234	3,672	6,648	6,700
D5 Hot Rolled Plates (<3mm)	10,992	12,203	8,212	10,541	11,914	11,750	11,038	11,837	11,421	11,701
D6 Cold Rolled Plates, Sheets, & Coils	12,077	13,060	10,099	12,502	12,396	12,314	12,020	12,573	12,584	12,569
D7 Cold Rolled Strip	844	962	657	835	909	795	835	843	854	789
D8 Electrical Sheet and Strip	545	543	404	415	445	375	377	422	475	439
D9 Tinplate, TFS and Strip	5,179	4,470	3,920	3,908	3,685	3,423	3,448	3,618	3,691	3,734
D10 Zinc Coated Sheet and Strip	4,757	5,373	4,871	5,837	6,132	6,847	7,368	8,248	9,298	9,701
D11 Other Coated Sheet and Strip	655	758	630	858	1,006	1,018	1,068	1,114	1,145	1,249
D Total Flat Products	42,986	44,718	33,005	38,932	41,012	40,979	39,965	42,923	47,207	47,866
E1 Steel Tubes, Seamless	8,252	9,330	4,560	2,943	3,878	3,716	2,573	3,238	4,031	3,638
E2 Steel Tubes, Welded (c)										
E Total Steel Tubes	8,252	9,330	4,560	2,943	3,878	3,716	2,573	3,238	4,031	3,638
F Railway Tyres, Wheels and Axles	319	191	98	66	83	92	71	79	(included in B)	
T Total All Products	75,999	80,181	55,813	61,269	66,840	66,209	63,691	69,486	75,999	76,234
U Adjustment to Avoid Double Counting										
V Net Totals *	75,999	80,181	55,813	61,269	66,840	66,209	63,691	69,486	75,999	76,234
* of which:										
V1 Stainless Steel Total	1,022	1,055	811	1,031	1,132	1,135	1,077	1,286	1,439	1,336
V2 Other Alloys Total	8,499	9,736	6,102	5,583	6,788	6,742	5,948	6,459	4,130	3,758
Tool Steel (d)	72	61	40	42	55	55	51	53	58	61

Notes:

- a including Wire Products
- b including Plates in Coils
- c included in E1
- d excluded from main table

Due to the introduction of the new Harmonized System of reporting, some of these series' are not strictly compatible with those shown on the preceding pages.

Table 6A

TOTAL DELIVERIES OF STEEL PRODUCTS

thousand metric tons

	All Grades	Argentina		Brazil		France		F.R. Germany		Japan
		1988	1988	1989	1988	1989	1988	1989	1988	
A1	Solids for Seamless Tubes				169	164	2,693	2,478		
A2	Ingots and Semis	262	6,141	6,843	749	684	2,942	2,544		
B	Railway Track Material	12	82	18	187	156	259	224		395
C1	Heavy Sections	75	204	207	757	740	1,672	1,721		7,299
C2	Light Sections	52	271	274	1,196	209 a	2,048	2,047 a		11,904
C3	Reinforcing Bars	368	2,196	2,385	750	865	942	892		
C4	Other Hot Rolled Bars	95	832	1,013		825 a				12,035
C5	Wire Rods	285	1,130	917	2,140	2,124	3,820	3,915		7,501
C6	Drawn Wire	136	1,048	1,207						4,125
C7	Cold Finished Bars	33	282	115						1,280
C	Total Long Products	1,045	5,963	6,117	4,843	4,763	8,482	8,575		44,144
D1	Hot Rolled Strip	103	0	0	455	436	2,169	2,344		
D2	Hot Rolled Wide Coils (>3mm)	522	1,950	3,049	1,449	1,495	5,355	5,831		9,055
D3	Hot Rolled Wide Coils (<3mm)	58	0	0	1,952	1,784				
D4	Hot Rolled Plates (>3mm)	64	2,680	2,390	1,172	1,192	3,904	4,028		9,108
D5	Hot Rolled Plates (<3mm)	8	1,395	367	79	98	102	60		226
D6	Cold Rolled Plates, Sheets, and Coil	834	2,898	2,687	2,672	2,569	4,907	5,125		12,317
D7	Cold Rolled Strip	19	0	0						569
D8	Electrical Sheet and Strip		75	100	254	281	460	505		1,684
D9	Tinplate, TFS and Strip	78	532	560	1,009	964	1,161	1,193		1,783
D10	Zinc Coated Sheet and Strip		369	385	2,257	2,303	2,976	3,179		10,803
D11	Other Coated Sheet and Strip		341	362						2,051
D	Total Flat Products	1,685	10,241	9,900	11,298	11,122	21,034	22,265		47,596
E1	Steel Tubes, Seamless	399	278	318						2,886
E2	Steel Tubes, Welded		0	0						8,077
E	Total Steel Tubes	399	278	318						10,963
F	Railway Tyres, Wheels and Axles	6	0	0						34
T(A..F)	Total All Products	3,409	22,704	23,197	17,246	16,889	35,410	36,086		103,132
U	Adjustment to avoid double counting		0	0						5,405
V(T-U)	Net Totals *		22,704	23,197	17,246	16,889	35,410	36,086		97,727
	* of which:									
V1	Stainless Steel Total	5	133	138	622	578	994	963		
V2	Other Alloys Total	246	560	797	879	989	1,995	2,126		

Notes:

- a C4 included in C2
- b D3, D4, D5 included in D2
- c D10, D11 included in D8
- d excluding Tool Steel
- e C7 included in C4

Due to the introduction of the new Harmonized System of reporting, some of these series' are not strictly compatible with those shown on the preceding pages.

Table 6A

TOTAL DELIVERIES OF STEEL PRODUCTS

thousand metric tons

	All Grades	Japan		R.o.Korea		Portugal		United Kingdom	
		1989	1987	1988	1989	1988	1989	1988	1989
A1	Solids for Seamless Tubes							533	471
A2	Ingots and Semis					2	1	1,904	1,726
B	Railway Track Material	342	125	93	60	10	0	220	231
C1	Heavy Sections	8,798	1,305	1,469	1,593	27	27	2,228	2,253
C2	Light Sections	12,723				55	104	346	321
C3	Reinforcing Bars		3,401	3,605	4,080	458	440	715	720
C4	Other Hot Rolled Bars	12,669	879	993	972	46		944	1,065
C5	Wire Rods	7,392	1,152	1,161	1,598	108	99	1,813	1,914
C6	Drawn Wire	4,264							
C7	Cold Finished Bars	1,341			e			342	340
C	Total Long Products	47,187	6,737	7,227	8,243	694	670	6,387	6,613
D1	Hot Rolled Strip		58	48	48			352	350
D2	Hot Rolled Wide Coils (>3mm)	9,027	2,428	3,038	3,459			3,058	3,119 b
D3	Hot Rolled Wide Coils (<3mm)								b
D4	Hot Rolled Plates (>3mm)	9,856	2,381	2,311	2,262				b
D5	Hot Rolled Plates (<3mm)	208	483	538	455	0			b
D6	Cold Rolled Plates, Sheets, and Coil	11,701	1,762	1,896	2,732	89	72	3,641	3,728 c
D7	Cold Rolled Strip	587	71	103	110			404	398
D8	Electrical Sheet and Strip	1,611	113	140	153				c
D9	Tinplate, TFS and Strip	1,744	225	244	273	59	52	1,042	976
D10	Zinc Coated Sheet and Strip	11,727	911	786	1,204	75	98		c
D11	Other Coated Sheet and Strip	2,026	26	28	25				c
D	Total Flat Products	48,487	8,459	9,133	10,720	224	221	8,497	8,571
E1	Steel Tubes, Seamless							364	397
E2	Steel Tubes, Welded							1,117	1,122
E	Total Steel Tubes	11,013	1,883	2,112	2,410			1,482	1,519
F	Railway Tyres, Wheels and Axles	40	302	322	323				
T(A..F)	Total All Products	107,069	17,507	18,887	21,756	929	892	19,023	19,131
U	Adjustment to avoid double counting	5,605						2,342	2,252
V(T-U)	Net Totals *	101,464	17,507	18,887	21,756	929	892	16,681	16,879
	* of which:								
V1	Stainless Steel Total							362	313
V2	Other Alloys Total							900	893

Table 7

EXPORTS OF SEMI-FINISHED & FINISHED STEEL PRODUCTS

thousand metric tons

	1980	1981	1982	1983	1984	1985	1986	1987	1988	1989
Belgium-Luxembourg	13,671	12,638	10,841	11,257	12,586	12,634	11,760	12,388	14,198	14,005
Denmark	646	586	475	799	640	543	577	618	645	638
France	11,310	11,416	9,393	9,529	11,187	11,408	10,966	11,039	11,338	11,485
F.R. Germany	19,325	19,318	17,308	16,675	18,910	20,690	18,689	18,885	18,977	19,878
Greece	522	377	291	487	705	708	723	630	542	714
Ireland	37	36	55	113	143	187	191	213	245	315
Italy	6,771	8,234	6,991	7,367	7,779	8,007	7,247	7,234	6,775	7,721
Netherlands	4,569	4,908	4,004	4,231	5,105	5,137	5,166	5,215	5,600	5,764
Portugal	68	20	32	166	229	327	243	161	119	47
Spain	4,530	5,027	4,884	5,685	6,541	7,781	5,195	4,776	3,899	3,567
United Kingdom	2,753	3,934	3,519	4,083	4,138	4,893	5,289	6,450	6,676	6,735
E.C. Total	64,202	66,494	57,793	60,392	67,963	72,315	66,046	67,608	69,013	70,869
Austria	2,371	2,702	2,455	2,705	3,193	3,185	2,809	3,053	3,076	3,036
Finland	954	1,027	868	1,070	1,143	1,333	1,274	1,540	1,424	1,469
Norway	651	665	567	704	733	754	570	760	718	651
Sweden	2,125	2,011	2,230	2,326	2,826	3,089	2,867	2,854	2,915	2,818
Switzerland	566	564	594	893	924	913	908	860	850	850 E
Turkey	14	125	174	1,051	1,388	2,720	2,633	2,177	2,805	2,247
Yugoslavia	249	264	371	571	895	1,135	916	1,711	1,878	2,447
Other Western Europe	6,930	7,358	7,259	9,320	11,102	13,129	11,977	12,955	13,666	13,518
Total Western Europe	71,132	73,852	65,052	69,712	79,065	85,444	78,023	80,563	82,679	84,387
Canada	3,534	3,575	3,193	2,976	3,459	3,586	3,819	4,202	3,627	3,985
United States	3,720	2,634	1,671	1,087	889	845	843	1,024	1,877	4,153
Japan	29,693	28,456	28,641	30,875	31,929	31,527	28,707	25,217	23,304	19,881
Australia	1,555	1,549	1,313	1,294	900	1,400	1,203	1,115	790	1,066
New Zealand	125	45	87	120	150	150	150	140	72	312
South Africa	1,693	1,630	1,985	1,739	1,708	2,899	3,164	2,636	2,145	1,842
Total Industrial Cts.	111,452	111,741	101,942	107,803	118,100	125,851	115,908	114,897	114,494	115,625
Argentina	286	590	752	677	537	1,123	1,181	1,062	1,566	1,690
Brazil	1,506	1,850	2,386	5,133	6,464	7,109	6,139	6,546	10,916	10,771
Chile	9	5	163	146	99	100	127	94	46	14
Colombia	9	4	0	0	0	0	0	0	0	6
Costa Rica	18	24	7	8	8	9	14	14	16	15 E
El Salvador	8	2	1	0	0	0	1	2	2	2 E
Guatemala	16	19	19	16	11	8	9	10	10	10 E
Honduras	3	1	2	1	0	0	0	0	0	0 E
Mexico	67	42	293	1,004	894	433	1,081	1,332	1,247	1,118
Peru	6	0	8	15	2	19	2	0	0	4
Trinidad & Tobago	0	0	95	136	110	86	146	153	165	170 E
Venezuela	241	388	293	852	801	1,266	913	947	711	779
Others	10	5	2	10	9	6	16	30	15	15 E
Total Latin America	2,179	2,930	4,021	7,996	8,934	10,158	9,631	10,191	14,694	14,594

Table 7
(continued)

EXPORTS OF SEMI-FINISHED & FINISHED STEEL PRODUCTS

thousand metric tons

	1980	1981	1982	1983	1984	1985	1986	1987	1988	1989
Egypt	17	31	14	33	11	17	38	61	66	70 E
Zimbabwe	534	319	381	383	318	356	364	320	323	336
Total Africa	551	350	395	416	329	373	402	381	389	406
Israel	61	25	4	2	3	39	16	15	15	15 E
Jordan	5	5	7	2	4	5	5	5	5	5 E
Kuwait	70	210	305	176	104	100	100	100	100	100 E
Qatar	440	450	393	395	443	480	480	480	480	480 E
Total Middle East	576	690	709	575	554	624	601	600	600	600
Hong Kong	112	115	125	307	630	893	719	800	850	850 E
India	49	0	11	25	154	15	27	50	113	221
Indonesia (E: 1988)	24	16	2	0	50	111	225	607	630	671
Republic of Korea	4,482	4,663	5,546	5,639	5,848	5,650	5,860	6,040	6,992	7,346
Malaysia	89	19	21	28	84	72	75	75	75	75 E
Philippines	122	8	1	3	0	4	1	4	5	5 E
Singapore	370	412	426	316	409	369	375	465	585	680
Taiwan (R.O.C.)	769	1,193	1,850	2,090	1,951	1,885	1,443	1,102	1,656	1,596
Thailand	78	82	41	38	69	148	150	150	150	200 E
Total Asia	6,095	6,508	8,023	8,446	9,195	9,147	8,875	9,293	11,056	11,644
Total Developing Cts.	9,401	10,478	13,148	17,433	19,012	20,302	19,509	20,465	26,739	27,244
Total Western World	120,853	122,219	115,090	125,237	137,112	146,154	135,417	135,362	141,233	142,870
Bulgaria	1,050	1,073	933	896	1,039	920	959	792	954	857
Czechoslovakia	3,473	3,407	3,299	3,518	3,776	3,893	3,980	4,128	4,059	3,803
German Dem. Rep.	2,618	3,139	2,893	4,245	4,208	4,094	4,278	4,882	4,650	4,500 E
Hungary	1,220	1,112	1,021	1,135	1,423	1,268	1,292	1,231	1,550	1,567
Poland	1,936	1,667	1,639	2,336	2,296	2,187	2,234	2,257	2,348	2,400 E
Romania	1,984	2,083	1,901	2,175	2,779	2,932	3,060	3,100	3,100	3,000 E
U.S.S.R.	7,184	7,089	7,575	5,320	5,473	8,738	9,305	9,118	9,248	5,269
Total Eastern Europe	19,465	19,570	19,261	19,625	20,993	24,032	25,108	25,508	25,909	21,396
China	398	617	1,101	492	203	181	198	277	671	500 E
Total C.P.E.'s	19,863	20,187	20,362	20,117	21,196	24,213	25,306	25,785	26,580	21,896
World Total	140,716	142,406	135,452	145,354	158,309	170,366	160,723	161,147	167,813	164,765

E - estimate

Table 8

IMPORTS OF SEMI-FINISHED & FINISHED STEEL PRODUCTS

thousand metric tons

	1980	1981	1982	1983	1984	1985	1986	1987	1988	1989
Belgium-Luxembourg	3,056	2,777	2,771	3,256	3,536	3,518	3,509	3,780	5,126	4,701
Denmark	1,411	1,442	1,713	1,447	1,548	1,690	1,629	1,503	1,595	1,699
France	8,822	8,233	8,371	7,576	8,173	7,900	7,996	8,469	9,422	9,898
F.R. Germany	11,809	11,743	10,519	11,924	11,635	12,214	12,942	12,543	14,054	15,106
Greece	1,171	1,095	982	1,539	1,262	1,404	1,453	1,494	1,400	1,575
Ireland	403	452	424	334	369	361	328	358	435	493
Italy	6,991	4,859	4,848	4,787	5,760	6,241	6,957	7,776	9,076	10,242
Netherlands	3,890	3,457	3,400	3,231	3,767	4,057	4,136	3,822	4,630	4,903
Portugal	591	624	979	652	642	695	672	841	1,237	1,031
Spain	1,762	1,138	1,500	1,081	1,133	1,452	2,588	2,432	2,696	3,165
United Kingdom	4,707	3,399	3,925	3,429	3,646	3,865	4,233	4,391	5,225	5,500
E.C. Total	44,613	39,219	39,432	39,256	41,471	43,397	46,443	47,409	54,896	58,312
Austria	933	905	864	895	996	1,041	1,211	1,169	1,343	1,471
Finland	618	622	661	624	616	704	687	809	688	889
Norway	1,340	1,135	1,251	1,037	1,140	1,163	1,184	1,103	1,077	1,080
Sweden	1,981	1,724	1,915	1,820	1,959	1,754	1,841	1,938	2,117	2,090
Switzerland	1,950	1,795	1,572	1,821	2,026	2,035	2,087	2,160	2,163	2,265
Turkey	706	868	905	1,408	2,203	3,070	2,155	1,897	1,589	1,838
Yugoslavia	1,971	2,040	1,552	1,547	1,548	1,663	2,142	3,442	2,471	2,500 E
Others	146	132	160	149	165	167	225	197	270	240 E
Other Western Europe	9,645	9,221	8,880	9,301	10,653	11,597	11,532	12,715	11,718	12,373
Total Western Europe	54,258	48,440	48,312	48,557	52,124	54,994	57,975	60,124	66,614	70,685
Canada	1,448	3,012	1,198	1,287	2,137	2,382	2,157	2,763	3,821	2,631
United States	14,057	18,052	15,116	15,486	23,735	22,005	18,772	18,520	18,952	15,713
Japan	1,165	1,557	2,011	2,744	4,003	2,903	3,308	4,981	6,871	7,250
Australia	523	800	900	600	700	700	600	910	842	766
New Zealand	439	468	544	559	600	550	460	530	486	301
South Africa	124	161	168	179	243	125	91	114	191	178
Total Industrial Cts.	72,014	72,490	68,249	69,412	83,542	83,658	83,362	87,941	97,777	97,524
Argentina	1,035	653	609	654	899	459	560	770	997	419
Bolivia	48	112	54	29	51	32	35	35	37	40
Brazil	664	898	421	84	102	102	566	526	112	200
Chile	92	67	41	25	71	76	167	174	167	218
Colombia	467	460	563	394	530	604	487	416	492	560
Costa Rica	141	95	60	97	132	138	110	53	148	120 E
Dominican Republic	86	63	130	69	104	52	62	78	80	115
Ecuador	281	292	272	121	241	344	237	146	192	223
El Salvador	48	47	38	43	55	55	65	45	48	50 E
Guatemala	170	134	106	97	95	100	107	83	95	100 E
Honduras	68	49	34	51	50	58	45	37	38	40 E
Mexico	2,623	3,052	1,217	429	701	680	567	357	563	615
Peru	144	330	158	49	118	135	59	162	199	117
Venezuela	919	855	932	259	211	151	239	529	553	141
Others	289	231	424	398	350	375	350	400	450	450 E
Total Latin America	7,075	7,338	5,060	2,799	3,710	3,361	3,655	3,810	4,171	3,408

Table 8
(continued)

IMPORTS OF SEMI-FINISHED & FINISHED STEEL PRODUCTS

thousand metric tons

	1980	1981	1982	1983	1984	1985	1986	1987	1988	1989
Algeria	1,429	1,537	1,351	1,391	1,561	1,482	1,500	1,250	1,250	1,300 E
Egypt	907	966	1,123	1,353	1,225	1,980	4,016	2,144	2,200	2,300 E
Kenya	180	132	97	161	171	218	150	232	186	179
Libyan Arab Republic	865	1,044	375	551	309	490	282	361	400	486
Morocco	462	489	617	540	683	649	448	494	517	603
Nigeria (E:1988/9)	3,814	3,869	3,342	1,527	1,227	2,153	2,160	2,423	2,200	2,200 E
Tanzania	68	32	66	70	58	56	42	51	50	55
Tunisia	356	323	433	421	317	309	278	256	382	353
Zaire	60	51	52	50	73	24	19	27	59	46
Zambia	23	12	9	8	11	23	24	2	5	5 E
Zimbabwe	20	50	126	102	62	109	113	80	100	100 E
Other Africa	900	950	500	750	1,000	1,000	800	600	600	600 E
Total Africa	9,084	9,455	8,091	6,924	6,697	8,493	9,832	7,920	7,949	8,228
Bahrain	47	47	89	117	105	94	51	25	33	40
Iran	2,515	1,887	3,114	4,392	3,250	4,532	3,036	4,147	3,100	3,600 E
Iraq	1,593	1,208	955	1,000	750	852	394	579	580	782
Israel	223	394	427	346	422	437	506	600	600	650 E
Jordan	262	362	324	371	306	249	359	332	350	350 E
Kuwait	645	805	929	767	1,059	406	443	204	229	145
Lebanon	285	287	315	340	443	320	166	97	100	100 E
Oman	100	194	261	256	387	452	246	250	250	250 E
Qatar	58	101	108	70	39	104	98	100	100	100 E
Saudi Arabia	2,708	3,198	5,307	4,645	3,311	2,681	1,484	1,283	1,384	774
Syrian Arab Republic	918	434	768	404	737	980	181	104	94	110
Other	1,500	1,700	1,500	2,500	2,500	2,500	1,500	1,000	1,000	1,000 E
Total Middle East	10,854	10,617	14,097	15,208	13,309	13,607	8,464	8,721	7,820	7,901
Bangladesh	232	288	122	142	225	320	278	257	299	268
Hong Kong	1,645	1,709	1,830	1,814	2,074	2,405	2,449	2,600	2,700	2,750 E
India	1,817	2,706	2,463	1,727	1,569	2,166	2,455	2,004	1,899	1,950 E
Indonesia	2,055	2,091	2,063	1,614	1,328	986	1,193	1,051	1,233	1,096
Republic of Korea	2,137	2,115	1,345	2,144	2,934	2,632	2,909	3,761	3,379	3,797
Malaysia	1,174	1,277	1,826	1,974	1,877	1,454	1,066	1,120	1,101	1,368
Pakistan	654	551	1,110	1,115	768	775	700	600	600	600 E
Philippines	904	784	1,218	1,238	533	346	549	1,070	844	1,215
Singapore	1,597	1,974	2,256	2,400	2,040	1,697	1,625	1,681	2,205	2,399
Taiwan (R.O.C.)	2,455	2,266	1,665	1,341	1,507	1,441	2,371	3,533	5,667	5,942
Thailand	1,344	1,369	1,847	2,457	1,733	2,145	1,769	2,038	2,462	2,834
Other	1,020	910	850	800	950	980	1,000	1,250	1,300	1,300 E
Total Asia	17,034	18,040	18,595	18,766	17,538	17,347	18,364	20,965	23,689	25,519
Total Developing Cts.	44,047	45,450	45,843	43,697	41,253	42,808	40,314	41,417	43,629	45,056
Total Western World	116,061	117,940	114,092	113,108	124,795	126,466	123,677	129,359	141,406	142,580
Albania	143	80	121	120	120	120	120	120	120	120 E
Bulgaria (E: 1988)	1,335	1,477	1,378	1,262	1,123	1,029	1,003	883	800	674
Czechoslovakia	356	356	366	530	751	835	918	692	512	326
German Dem. Rep.	4,611	4,736	5,035	5,744	5,097	5,169	5,183	5,487	5,250	5,100 E
Hungary	1,079	1,115	1,022	1,096	1,069	1,041	1,111	1,075	1,170	1,140
Poland	1,720	1,396	1,330	1,240	1,295	1,363	1,324	1,219	1,271	1,200 E
Romania	1,277	977	915	978	683	840	1,335	1,199	1,271	1,200 E
U.S.S.R. (E)	9,064	8,921	10,083	9,302	9,514	10,713	10,100	10,000	10,500	10,200 E
Total Eastern Europe	19,585	19,058	20,250	20,272	19,652	21,110	21,094	20,675	20,894	19,960
Cuba	500	550	450	475	540	590	590	600	600	600 E
China	5,006	3,319	3,938	9,780	13,315	19,635	19,379	12,273	8,718	7,000 E
Other Asian C.P.E.'s	450	450	450	500	500	500	500	500	500	500 E
Total C.P.E.'s	25,541	23,377	25,088	31,027	34,007	41,835	41,563	34,048	30,712	28,060
World Total	141,602	141,317	139,180	144,135	158,802	168,301	165,240	163,407	172,118	170,640

E - estimate

Table 9

WORLD STEEL TRADE AS A PERCENTAGE OF WORLD STEEL PRODUCTION

million metric tons

Crude Steel Equivalent

Year	Exports	Production	Exports Percent
1970	117.5	594.0	19.8
1971	125.5	579.0	21.7
1972	133.0	626.2	21.2
1973	147.5	690.7	21.4
1974	171.2	703.4	24.3
1975	149.2	643.4	23.2
1976	164.9	675.1	24.4
1977	166.1	675.1	24.6
1978	180.6	716.4	25.2
1979	186.1	746.5	24.9
1980	182.9	715.6	25.6
1981	185.1	706.9	26.2
1982	176.1	644.9	27.3
1983	189.0	663.4	28.5
1984	205.8	710.3	29.0
1985	221.5	718.9	30.8
1986	208.9	713.4	29.3
1987	209.5	735.9	28.5
1988	218.2	778.8	28.0
1989	214.2	784.4	27.3

Finished Steel

Year	Exports	Production	Exports Percent
1975	114.8	491.7	23.3
1976	126.8	521.3	24.3
1977	127.8	532.2	24.0
1978	139.0	564.6	24.6
1979	143.2	594.2	24.1
1980	140.7	576.0	24.4
1981	142.4	562.7	25.3
1982	135.5	532.4	25.4
1983	145.4	546.0	26.6
1984	158.3	587.0	27.0
1985	170.4	596.0	28.6
1986	160.7	603.7	26.6
1987	161.1	623.0	25.9
1988	167.8	657.7	25.5
1989	164.8	671.3	24.5

In the upper table, total exports of semi-finished and finished steel products were multiplied by 1.3 to obtain the crude steel figures shown in the left-hand column. However, using a constant 1.3 makes no allowance for yield improvement, thus leading to increasing overstatement of the export share. In the lower table, both exports and production are shown in finished weight product, giving a more realistic export share.

Table 10

APPARENT CONSUMPTION OF CRUDE STEEL

thousand metric tons

	1980	1981	1982	1983	1984	1985	1986	1987	1988	1989
Belgium-Luxembourg	3,676	3,887	3,525	3,646	4,353	3,756	3,741	3,171	4,449	3,998
Denmark	1,615	1,565	1,936	1,213	1,553	1,797	1,796	1,585	1,701	1,798
France	20,159	17,461	17,197	15,298	15,492	14,812	14,522	14,820	16,983	17,565
F.R. Germany	34,795	32,608	27,917	30,242	31,053	30,824	30,626	29,103	35,482	35,712
Greece	1,659	1,775	1,753	2,107	1,550	1,795	1,853	1,900	1,941	1,938
Ireland	478	492	469	386	416	396	360	380	482	522
Italy	26,764	20,747	21,482	18,815	21,736	21,880	22,656	23,428	26,333	27,994
Netherlands	4,398	3,653	3,609	3,254	4,110	4,203	4,037	3,456	4,404	4,710
Portugal	1,296	1,291	1,645	1,273	1,199	1,129	1,239	1,539	2,142	1,903
Spain	9,260	8,167	9,080	7,468	7,026	6,711	8,821	8,962	10,502	12,343
United Kingdom (D)	16,050	16,090	15,180	14,710	14,330	14,350	14,820	14,980	17,490	17,400
E.C. Total	120,151	107,737	103,794	98,411	102,819	101,653	104,471	103,325	121,909	125,883
Austria	2,907	2,550	2,436	2,371	2,399	2,264	2,510	2,203	2,630	2,975
Finland	2,131	1,974	2,183	1,918	2,051	1,815	1,931	1,853	1,976	2,274
Norway	1,738	1,442	1,613	1,283	1,401	1,429	1,562	1,258	1,337	1,138
Sweden	4,065	3,436	3,539	3,633	3,716	3,292	3,549	3,556	3,873	3,865
Switzerland	2,612	2,420	1,996	1,928	2,268	2,292	2,436	2,359	2,490	2,526
Turkey	3,374	3,316	4,049	4,252	5,271	5,272	5,381	6,724	6,605	7,390
Yugoslavia	5,738	6,123	5,268	5,298	5,014	5,108	5,978	6,421	5,183	4,562
Others	178	159	190	175	193	194	260	226	309	273
Other Western Europe	22,743	21,420	21,273	20,856	22,313	21,667	23,607	24,601	24,402	25,004
Total Western Europe	142,894	129,158	125,067	119,267	125,132	123,319	128,078	127,927	146,311	150,886
Canada	13,306	14,118	9,418	10,771	13,089	13,183	12,080	13,013	15,091	13,904
United States	114,433	128,969	84,290	94,484	111,714	105,593	95,286	101,468	110,698	102,351
Japan (D)	79,007	71,136	69,504	65,614	74,367	73,377	69,941	75,751	86,871	93,278
Australia	6,271	6,683	5,850	4,811	6,054	5,740	5,925	5,853	6,447	6,390
New Zealand	612	731	795	751	807	692	645	857	933	595
South Africa	7,197	7,264	6,146	5,345	6,013	5,267	5,302	6,042	6,573	7,644
Total Industrial Cts.	363,719	358,059	301,071	301,044	337,175	327,172	317,257	330,911	372,925	375,050
Argentina	3,578	2,601	2,743	2,915	3,081	2,164	2,510	3,292	2,970	2,431
Bolivia	58	135	64	34	60	37	40	40	42	46
Brazil	14,303	12,063	10,612	8,580	10,673	11,995	14,528	14,980	11,720	12,462
Chile	811	725	334	462	656	658	758	830	1,056	1,077
Colombia	977	953	1,090	946	1,127	1,234	1,194	1,167	1,275	1,337
Costa Rica	150	86	63	105	145	150	111	45	151	120
Dominican Republic	105	76	154	81	122	60	72	90	92	131
Ecuador	359	380	351	165	300	418	291	193	243	277
El Salvador	49	54	44	51	64	64	74	49	53	55
Guatemala	187	139	103	95	99	107	113	84	97	102
Honduras	79	58	38	59	58	67	52	42	43	45
Mexico	10,317	11,369	8,181	6,296	7,331	7,693	6,608	6,485	6,969	7,256
Peru	615	762	451	340	473	546	573	697	708	530
Trinidad & Tobago	75	0	71	49	59	73	158	185	173	153
Venezuela	2,798	2,577	2,966	1,688	2,097	1,771	2,621	3,220	3,469	2,661
Others	383	401	778	772	542	569	550	597	705	690
Total Latin America	34,843	32,378	28,042	22,639	26,885	27,605	30,252	31,996	29,767	29,373

Table 10
(continued)

APPARENT CONSUMPTION OF CRUDE STEEL

thousand metric tons

	1980	1981	1982	1983	1984	1985	1986	1987	1988	1989
Algeria	2,126	2,412	2,472	2,530	2,582	3,138	3,182	2,969	2,841	2,522
Egypt	2,050	2,143	2,391	2,533	2,349	3,312	5,606	3,826	4,465	4,652
Kenya	219	159	115	190	200	254	173	266	213	204
Libyan Arab Republic	1,052	1,260	445	649	362	570	326	415	457	553
Morocco	562	590	733	636	799	755	517	567	591	686
Nigeria	1,500	1,300	1,400	800	1,000	700	600	800	500	600
Tanzania	83	39	78	82	68	65	48	59	57	63
Tunisia (D)	662	601	666	717	576	547	511	494	599	589
Zaire	73	62	62	59	85	28	22	31	68	53
Zambia	28	14	11	9	13	27	28	2	6	6
Zimbabwe (D)	134	184	134	112	133	162	164	153	173	211
Other Africa	1,165	1,216	664	958	1,245	1,238	999	764	761	758
Total Africa	9,653	9,981	9,170	9,274	9,413	10,796	12,176	10,346	10,732	10,897
Bahrain	57	57	106	138	123	109	59	29	38	46
Iran	3,609	2,842	4,247	5,905	4,658	6,109	4,344	5,602	4,523	5,179
Iraq	1,938	1,458	1,134	1,177	878	991	455	665	663	891
Israel	312	559	589	488	582	563	676	788	768	823
Jordan	313	431	376	434	353	284	409	376	395	393
Kuwait	699	718	741	696	1,118	356	396	119	148	51
Lebanon	347	346	374	400	518	372	192	111	114	114
Oman	122	234	310	301	453	526	284	287	286	285
Qatar	38	82	179	109	30	116	83	71	106	164
Saudi Arabia	3,294	3,859	6,300	5,744	4,717	4,225	2,814	2,839	3,197	2,691
Syrian Arab Republic	1,117	524	912	476	863	1,140	209	119	107	125
Other	1,924	2,152	1,881	3,043	3,026	3,009	1,832	1,249	1,244	1,238
Total Middle East	13,768	13,262	17,149	18,911	17,319	17,800	11,752	12,255	11,588	12,000
Bangladesh	413	482	223	225	351	494	437	415	462	425
Hong Kong	1,985	2,044	2,144	1,894	1,810	1,879	2,118	2,187	2,236	2,313
India (D)	10,900	14,000	13,900	11,600	13,900	14,400	15,290	17,640	19,040	20,036
Indonesia	3,013	3,125	3,140	2,883	2,666	2,392	2,847	2,569	2,539	2,334
Republic of Korea (D)	6,100	7,480	7,630	8,620	10,620	11,310	12,190	15,050	15,830	18,300
Malaysia	1,530	1,728	2,353	2,641	2,449	2,008	1,544	1,750	1,723	2,022
Pakistan	795	675	1,338	1,433	1,199	1,652	1,708	1,689	1,886	1,883
Philippines (D)	1,195	1,061	1,200	1,513	808	674	1,020	1,624	1,901	2,182
Singapore (D)	1,832	2,148	2,532	2,759	2,271	2,042	2,079	2,216	2,545	3,021
Taiwan (R.O.C.) (D)	6,328	5,563	5,074	5,770	6,086	6,316	7,835	9,401	11,630	14,100
Thailand	1,990	1,853	2,456	3,092	2,329	2,770	2,329	2,703	3,179	3,548
Other	1,281	1,138	1,059	992	1,162	1,200	1,215	1,496	1,557	1,550
Total Asia	37,362	41,297	43,049	43,422	45,650	47,137	50,612	58,741	64,528	71,714
Total Developing Cts.	95,626	96,919	97,410	94,246	99,268	103,338	104,793	113,337	116,614	123,983
Total Western World	459,345	454,978	398,480	395,290	436,443	430,510	422,050	444,248	489,539	499,033

Table 10
(continued)

APPARENT CONSUMPTION OF CRUDE STEEL
thousand metric tons

	1980	1981	1982	1983	1984	1985	1986	1987	1988	1989
Albania	183	102	154	153	152	152	152	151	151	151
Bulgaria	2,938	3,008	3,165	3,295	2,986	3,085	3,021	3,160	2,685	2,667
Czechoslovakia	10,883	11,314	11,196	11,174	10,948	11,114	11,188	11,015	10,838	11,016
German Dem. Rep.	9,836	9,487	9,871	9,108	8,680	9,171	9,073	8,981	8,862	8,557
Hungary	3,595	3,649	3,703	3,570	3,344	3,374	3,500	3,437	3,137	2,809
Poland	19,206	15,369	14,395	14,821	15,254	15,074	15,983	15,821	15,500	13,555
Romania	12,284	11,637	11,822	11,105	11,849	11,211	12,152	12,623	12,061	12,207
U.S.S.R. (E)	150,330	150,849	150,343	157,578	159,369	157,161	161,544	162,989	164,619	166,319
Total Eastern Europe	209,254	205,415	204,648	210,803	212,582	210,341	216,613	218,178	217,853	217,281
Cuba	942	1,031	874	968	1,023	1,155	1,156	1,159	1,070	1,091
China	43,005	39,046	40,770	51,834	60,104	71,428	76,437	71,147	69,275	69,504
Other Asian C.P.E.'s	6,375	6,073	6,373	6,736	7,134	7,133	7,232	7,360	7,460	7,560
Total C.P.E.'s	259,576	251,565	252,665	270,341	280,843	290,058	301,438	297,843	295,657	295,437
World Total	718,921	706,543	651,146	665,631	717,285	720,568	723,488	742,092	785,196	794,470

Apparent Consumption of Crude Steel
million metric tons

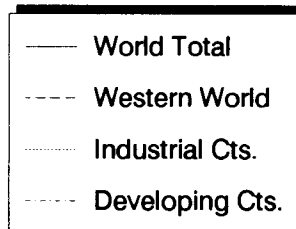
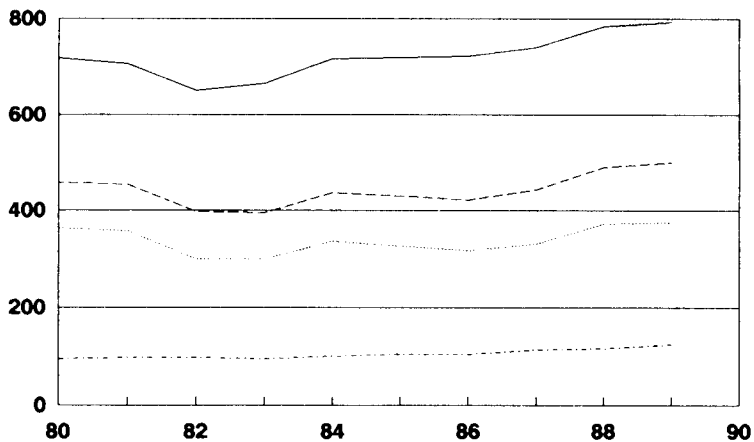
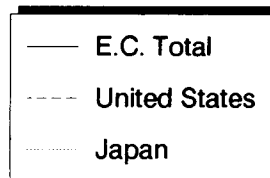
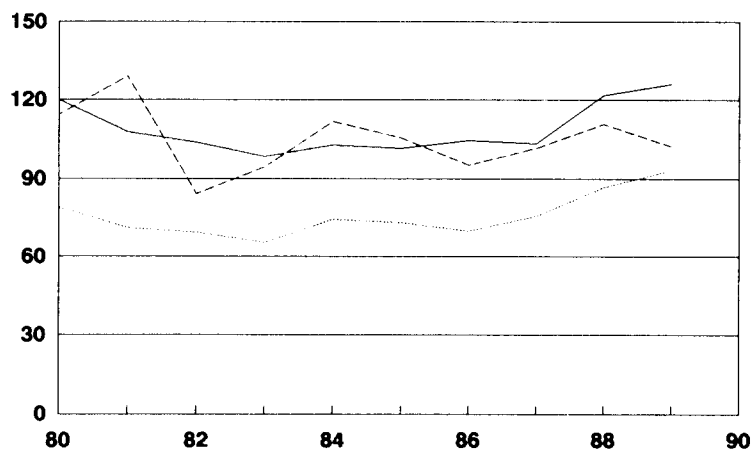


Table 11

APPARENT CONSUMPTION PER CAPITA
kilograms crude steel

	1980	1981	1982	1983	1984	1985	1986	1987	1988	1989
Belgium-Luxembourg	359.9	380.3	344.9	356.7	425.9	367.4	365.7	309.7	434.0	388.2
Denmark	315.3	305.6	378.3	237.1	303.9	351.4	350.7	309.1	331.6	350.3
France	374.2	322.3	315.7	279.5	282.0	268.5	262.2	266.4	303.9	312.8
F.R. Germany	565.2	528.6	452.9	492.4	507.6	505.1	501.5	476.5	577.7	576.1
Greece	172.1	182.5	179.1	213.9	156.6	180.7	185.9	190.4	193.9	193.3
Ireland	140.5	143.0	134.8	110.0	117.9	111.7	101.5	107.4	136.1	148.6
Italy	474.3	367.1	379.3	331.0	381.3	382.9	395.7	408.6	458.4	486.7
Netherlands	310.8	256.4	252.2	226.5	284.9	290.0	277.3	235.7	298.4	317.6
Portugal	132.6	130.9	165.7	1271.8	118.8	111.1	121.3	150.2	208.2	181.8
Spain	246.7	216.3	239.1	195.6	183.2	174.4	228.5	231.6	270.9	318.0
United Kingdom	285.0	285.4	269.5	260.9	253.7	253.5	261.1	263.1	306.5	304.2
E.C. Total	377.8	337.6	324.4	315.8	320.1	315.8	323.7	319.4	375.6	386.2
Austria	385.1	337.1	321.8	313.9	317.6	299.6	331.7	290.9	346.9	392.0
Finland	445.9	411.3	452.2	394.9	420.1	370.3	392.6	375.5	399.2	457.8
Norway	425.3	351.8	392.1	310.8	338.5	344.0	374.7	300.7	318.2	269.9
Sweden	489.1	413.0	425.1	436.1	445.7	394.3	424.0	423.9	460.5	458.5
Switzerland	409.1	376.4	308.7	297.4	348.6	350.9	370.7	356.7	374.2	377.4
Turkey	75.4	72.3	86.1	88.2	106.7	104.1	103.6	126.3	121.0	132.0
Yugoslavia	257.3	272.5	232.8	232.4	218.4	220.9	256.9	274.3	220.1	192.5
Others	145.8	129.4	152.7	138.5	150.9	150.4	200.9	172.7	232.7	203.2
Other Western Europe	228.9	212.6	208.2	201.3	212.4	203.3	218.4	224.3	219.3	221.5
Total Western Europe	342.3	307.6	296.3	287.2	293.5	287.8	297.3	295.3	335.7	343.8
Canada	553.4	580.0	382.4	432.8	521.0	519.8	472.1	503.9	579.1	528.8
United States	502.4	560.4	362.5	402.4	471.4	441.3	394.4	416.0	449.8	412.2
Japan	676.4	604.6	586.8	550.2	619.6	607.7	575.7	619.7	706.4	753.8
Australia	426.7	447.8	385.4	313.0	388.6	363.6	369.9	359.9	389.8	379.6
New Zealand	194.6	231.7	249.6	232.7	247.6	211.2	196.7	261.3	284.7	181.6
South Africa	251.6	247.8	204.6	173.5	190.3	162.6	159.6	177.3	188.1	213.3
Total Industrial Cts.	436.9	426.6	355.8	356.9	392.6	378.1	363.8	376.6	421.0	419.9
Argentina	126.7	90.8	94.3	98.8	103.0	71.4	81.7	105.7	94.2	76.1
Bolivia	10.4	23.5	10.8	5.7	9.6	5.8	6.1	5.9	6.1	6.3
Brazil	117.9	97.2	83.6	66.1	80.5	88.5	104.9	105.9	81.2	84.5
Chile	72.8	64.0	29.0	39.4	55.0	54.3	61.5	66.2	82.8	83.1
Colombia	37.7	36.0	40.4	34.4	40.2	43.1	40.9	39.3	42.2	42.9
Costa Rica	66.5	37.7	27.1	42.9	60.0	60.3	41.5	16.5	54.3	41.9
Dominican Republic	19.2	13.6	26.9	13.3	19.4	9.4	10.9	13.3	13.3	18.7
Ecuador	44.2	45.5	40.8	18.6	32.9	44.5	30.2	19.4	23.8	26.5
El Salvador	10.8	11.8	9.4	10.7	13.5	13.3	15.1	9.9	10.3	10.5
Guatemala	27.1	19.5	14.1	12.7	12.8	13.4	13.8	10.0	11.2	11.5
Honduras	21.4	15.2	9.6	14.4	13.8	15.4	11.5	9.1	9.0	9.1
Mexico	148.7	159.6	111.9	84.0	95.5	98.0	83.1	79.9	84.2	86.1
Peru	35.5	42.9	24.7	18.2	24.6	27.7	28.3	33.6	33.3	24.3
Trinidad & Tobago	68.6	0.0	62.6	43.0	50.0	61.5	131.6	153.1	142.8	121.8
Venezuela	186.3	166.5	186.1	103.0	124.5	102.2	147.4	176.3	184.9	138.2
Others	32.1	32.8	61.8	59.9	41.1	42.2	39.9	42.2	48.5	46.2
Total Latin America	103.1	93.6	79.2	62.5	72.6	72.9	78.3	81.1	73.9	71.3

Table 11
(continued)

APPARENT CONSUMPTION PER CAPITA
kilograms crude steel

	1980	1981	1982	1983	1984	1985	1986	1987	1988	1989
Algeria	113.9	125.3	124.5	123.4	122.7	143.6	141.3	128.5	119.2	102.5
Egypt	48.5	49.3	53.5	55.2	49.8	68.3	113.0	75.4	86.0	87.7
Kenya	13.1	9.2	6.4	10.1	10.2	12.5	8.2	11.6	8.9	8.2
Libyan Arab Republic	346.1	396.2	133.7	186.9	99.9	150.4	82.9	101.6	108.1	126.3
Morocco	28.0	28.6	36.0	30.3	37.1	34.1	22.8	24.3	24.7	28.0
Nigeria	18.6	15.6	16.3	9.0	10.7	7.3	6.1	7.9	4.8	5.5
Tanzania	4.5	2.0	4.0	4.0	3.2	3.0	2.2	2.5	2.4	2.5
Tunisia	103.6	91.5	99.0	104.8	81.9	75.3	68.5	64.7	76.7	73.7
Zaire	2.8	2.3	2.2	2.0	2.8	0.9	0.7	1.0	2.0	1.5
Zambia	4.8	2.5	1.8	1.5	2.0	4.0	3.8	0.3	0.8	0.7
Zimbabwe	18.7	25.1	17.8	14.5	16.7	19.3	19.5	17.7	19.5	23.2
Other Africa	5.8	6.2	3.2	4.4	5.5	5.3	4.1	2.7	2.4	2.0
Total Africa	21.6	22.1	19.7	19.0	18.6	20.7	22.6	17.7	16.8	15.6
Bahrain	168.1	162.1	285.6	353.2	299.7	260.4	133.8	62.4	80.3	92.9
Iran	91.8	69.6	100.0	133.7	101.3	127.7	87.9	109.7	86.1	95.6
Iraq	146.3	106.6	80.4	80.7	58.2	63.6	28.2	40.7	38.4	48.7
Israel	80.6	141.6	146.2	118.7	140.0	133.1	157.2	180.3	172.9	182.3
Jordan	107.0	142.7	120.2	133.7	104.9	80.9	112.3	99.1	100.0	95.6
Kuwait	510.5	502.1	493.9	446.0	681.5	208.2	221.3	63.9	75.5	25.1
Lebanon	129.8	130.7	141.7	151.6	196.4	139.4	70.7	40.4	40.7	39.8
Oman	124.1	225.1	284.3	264.4	380.6	424.1	220.2	215.9	207.2	198.7
Qatar	163.2	342.2	688.5	402.7	107.8	387.3	269.3	213.8	320.4	390.6
Saudi Arabia	335.7	376.5	589.9	516.1	425.4	364.5	233.1	208.6	228.0	186.5
Syrian Arab Republic	128.3	58.2	98.0	49.5	86.9	111.0	19.7	10.9	9.5	10.7
Other	215.5	233.1	197.4	309.0	297.2	286.8	169.5	112.0	108.1	104.4
Total Middle East	149.1	138.6	173.0	184.1	163.5	162.1	103.5	103.8	95.0	95.0
Bangladesh	4.7	5.3	2.4	2.4	3.6	5.0	4.3	4.0	4.4	4.0
Hong Kong	392.0	394.3	407.3	354.4	335.3	344.4	382.8	389.7	393.6	400.8
India	16.2	20.3	19.7	16.1	18.9	19.2	20.0	22.6	23.9	24.7
Indonesia	20.4	20.7	20.3	18.2	16.5	14.5	16.9	14.9	14.5	13.0
Republic of Korea	160.0	193.2	194.0	215.9	262.1	275.5	293.2	357.6	369.1	418.6
Malaysia	111.2	122.6	162.7	178.2	161.2	128.1	95.9	105.9	101.7	119.2
Pakistan	9.6	7.9	15.2	15.8	12.9	17.2	17.2	16.5	17.9	17.3
Philippines	24.8	21.4	23.4	29.1	15.1	12.3	18.2	28.3	32.4	36.3
Singapore	760.3	880.3	1024.9	1103.4	901.2	797.7	802.7	849.0	960.4	1127.2
Taiwan (R.O.C.)	355.4	306.7	274.9	308.0	320.1	328.0	402.7	477.9	584.6	701.0
Thailand	42.8	38.8	50.4	62.2	45.9	53.6	44.2	50.4	58.3	64.0
Other	11.2	10.7	10.2	8.3	9.6	10.3	10.6	12.9	13.5	13.5
Total Asia	29.2	31.8	32.5	31.8	32.7	33.2	35.0	39.9	43.1	47.0
Total Developing Cts.	44.4	44.2	43.4	40.6	41.8	42.5	42.2	44.1	43.8	44.9
Total Western World	153.7	150.1	129.0	125.0	134.9	130.7	125.8	128.8	138.0	136.6

Table 11
(continued)

APPARENT CONSUMPTION PER CAPITA
kilograms crude steel

	1980	1981	1982	1983	1984	1985	1986	1987	1988	1989
Albania	68.4	37.3	55.4	53.7	52.5	51.3	50.2	49.1	48.2	47.2
Bulgaria	331.5	338.4	354.8	368.6	333.2	344.3	337.1	352.3	299.0	296.4
Czechoslovakia	710.9	738.5	728.4	725.1	708.2	717.0	720.4	707.4	693.9	704.4
German Dem. Rep.	587.6	566.7	591.1	545.4	520.7	551.1	545.9	539.7	531.6	514.5
Hungary	335.6	340.7	345.8	333.9	313.4	316.8	329.3	324.0	296.0	265.5
Poland	539.8	428.1	397.3	405.3	413.3	405.2	426.7	420.1	409.4	358.1
Romania	552.8	520.7	525.9	492.4	523.8	493.4	532.3	550.3	523.2	527.3
U.S.S.R. (E)	566.1	563.5	556.7	578.2	579.4	566.3	576.4	575.7	580.3	581.8
Total Eastern Europe	554.1	540.1	534.0	545.8	546.1	536.4	548.0	547.4	545.2	540.6
Cuba	97.0	106.0	89.2	97.8	102.4	114.4	113.4	112.5	102.8	103.8
China	43.6	39.0	40.2	50.6	58.1	68.3	72.1	66.3	63.6	63.0
Other Asian C.P.E.'s	88.9	82.8	84.9	87.7	90.7	88.7	87.9	87.4	86.6	85.8
Total C.P.E.'s	179.5	171.8	170.3	180.5	185.7	189.8	194.8	190.1	186.6	184.1
World Total	162.1	157.2	142.4	142.8	151.0	149.4	147.6	148.0	153.0	151.1

Table 12

APPARENT CONSUMPTION OF FINISHED STEEL

thousand metric tons

	1980	1981	1982	1983	1984	1985	1986	1987	1988	1989
Belgium-Luxembourg	2,919	3,121	2,851	2,976	3,603	3,150	3,190	2,754	3,870	3,486
Denmark	1,402	1,406	1,742	1,092	1,403	1,624	1,623	1,433	1,538	1,625
France	16,627	14,639	14,583	13,082	13,312	13,002	12,933	13,258	15,212	15,732
F.R. Germany	28,920	27,437	23,801	26,186	27,102	27,011	27,045	25,835	31,523	31,787
Greece	1,364	1,471	1,477	1,789	1,324	1,543	1,605	1,654	1,697	1,703
Ireland	368	445	424	348	376	357	325	344	435	471
Italy	22,385	17,377	18,218	16,202	18,865	19,147	19,992	20,856	23,549	25,080
Netherlands	3,419	2,914	2,927	2,661	3,375	3,454	3,338	2,961	3,836	4,175
Portugal	1,071	1,059	1,369	1,052	986	934	1,027	1,279	1,783	1,595
Spain	7,578	6,717	7,497	6,206	5,872	5,677	7,511	7,699	9,130	10,924
United Kingdom (D)	11,813	11,451	11,542	11,207	11,411	11,435	11,628	12,549	14,742	15,124
E.C. Total	97,864	88,038	86,430	82,801	87,630	87,333	90,216	90,620	107,316	111,702
Austria	2,437	2,176	2,127	2,103	2,133	2,026	2,250	1,979	2,361	2,672
Finland	1,898	1,763	1,953	1,717	1,838	1,625	1,731	1,660	1,770	2,037
Norway	1,367	1,141	1,305	1,050	1,175	1,206	1,321	1,059	1,124	974
Sweden (D)	2,991	2,775	2,692	2,688	2,820	2,647	2,761	2,851	3,020	3,011
Switzerland	2,148	2,005	1,681	1,637	1,938	1,970	2,110	2,054	2,177	2,219
Turkey	2,785	2,766	3,418	3,634	4,566	4,522	4,703	5,889	5,833	6,547
Yugoslavia	4,696	5,067	4,388	4,443	4,207	4,297	5,028	5,412	4,418	3,902
Others	146	132	160	149	165	167	225	197	270	240
Other Western Europe	18,468	17,825	17,726	17,421	18,840	18,460	20,129	21,101	20,974	21,602
Total Western Europe	116,332	105,863	104,156	100,222	106,470	105,794	110,345	111,720	128,291	133,304
Canada (D)	10,282	11,507	7,410	8,670	10,450	10,923	10,481	11,819	12,500	11,900
United States (D)	85,662	94,573	68,214	74,418	87,735	84,750	79,187	84,240	90,303	85,712
Japan (D)	71,307	63,272	63,601	61,168	69,097	69,861	67,702	72,891	80,961	88,306
Australia	4,911	5,258	4,638	3,860	4,877	4,625	4,773	4,853	5,580	5,603
New Zealand	503	606	669	638	689	595	559	746	816	523
South Africa (D)	5,200	5,331	4,692	4,311	4,617	4,066	4,113	4,239	4,660	4,883
Total Industrial Cts.	294,197	286,410	253,381	253,287	283,935	280,614	277,160	290,508	323,111	330,232
Argentina (D)	3,009	2,174	2,232	2,218	2,226	1,569	2,126	2,613	2,310	1,710
Bolivia	48	112	54	29	51	32	35	35	37	40
Brazil (D)	11,740	9,590	8,952	7,613	9,295	10,293	12,560	12,738	10,700	11,500
Chile	626	559	257	356	506	508	586	640	815	831
Colombia	803	789	918	804	963	1,060	1,034	1,016	1,115	1,174
Costa Rica	123	71	53	89	124	129	96	39	132	105
Dominican Republic	86	63	130	69	104	52	62	78	80	115
Ecuador	295	315	296	140	256	359	252	168	213	244
El Salvador	40	45	37	43	55	55	64	43	46	48
Guatemala	154	115	87	81	84	92	98	73	85	90
Honduras	65	48	32	50	50	58	45	37	38	40
Mexico	8,343	9,234	6,711	5,311	6,172	6,446	5,503	5,461	5,885	6,150
Peru	505	632	380	289	404	469	496	607	619	465
Trinidad & Tobago	70	0	60	42	50	62	137	161	151	135
Venezuela	2,305	2,198	2,561	1,472	1,816	1,538	2,268	2,811	3,036	2,329
Others	306	332	655	656	463	489	476	520	617	606
Total Latin America	28,520	26,277	23,414	19,262	22,619	23,211	25,838	27,040	25,878	25,582

Table 12
(continued)

APPARENT CONSUMPTION OF FINISHED STEEL

thousand metric tons

	1980	1981	1982	1983	1984	1985	1986	1987	1988	1989
Algeria	1,748	1,999	2,082	2,149	2,206	2,697	2,756	2,585	2,485	2,215
Egypt	1,686	1,776	2,014	2,152	2,007	2,847	4,855	3,331	3,905	4,087
Kenya	180	132	97	161	171	218	150	232	186	179
Libyan Arab Republic	865	1,044	375	551	309	490	282	361	400	486
Morocco	462	489	617	540	683	649	448	494	517	603
Nigeria	1,150	1,000	1,070	610	770	700	500	700	450	510
Tanzania	68	32	66	70	58	56	42	51	50	55
Tunisia (D)	523	471	517	564	467	420	420	404	466	483
Zaire	60	51	52	50	73	24	19	27	59	46
Zambia	23	12	9	8	11	23	24	2	5	5
Zimbabwe (D)	103	142	103	86	102	125	126	117	133	162
Other Africa	958	1,008	559	814	1,064	1,064	865	665	666	666
Total Africa	7,825	8,155	7,561	7,754	7,921	9,313	10,487	8,969	9,321	9,498
Bahrain	47	47	89	117	105	94	51	25	33	40
Iran	2,967	2,355	3,577	5,015	3,980	5,251	3,762	4,877	3,955	4,550
Iraq	1,593	1,208	955	1,000	750	852	394	579	580	782
Israel	257	463	496	414	498	484	585	686	672	723
Jordan	257	357	317	369	302	244	354	327	345	345
Kuwait	575	595	624	591	955	306	343	104	129	45
Lebanon	285	287	315	340	443	320	166	97	100	100
Oman	100	194	261	256	387	452	246	250	250	250
Qatar	34	74	161	98	27	105	75	64	95	148
Saudi Arabia	2,708	3,198	5,307	4,879	4,030	3,632	2,437	2,471	2,795	2,364
Syrian Arab Republic	918	434	768	404	737	980	181	104	94	110
Other	1,582	1,783	1,584	2,585	2,585	2,586	1,587	1,087	1,087	1,088
Total Middle East	11,323	10,996	14,455	16,069	14,799	15,305	10,181	10,672	10,136	10,545
Bangladesh	340	399	188	191	300	425	378	361	404	373
Hong Kong	1,632	1,693	1,806	1,609	1,547	1,615	1,834	1,904	1,955	2,032
India (D)	8,874	10,382	10,496	9,857	9,555	10,744	11,520	13,830	14,930	15,670
Indonesia	2,477	2,590	2,645	2,449	2,278	2,056	2,465	2,237	2,221	2,050
Republic of Korea (D)	5,115	6,314	6,455	7,540	8,938	9,687	10,405	13,745	14,519	16,946
Malaysia	1,258	1,432	1,982	2,243	2,092	1,726	1,337	1,524	1,507	1,776
Pakistan	654	559	1,127	1,217	1,024	1,420	1,479	1,471	1,649	1,654
Philippines (D)	996	884	1,000	1,261	673	562	850	1,353	1,584	1,818
Singapore (D)	1,509	1,932	2,128	2,413	1,873	1,555	1,513	1,693	1,933	2,254
Taiwan (R.O.C.) (D)	5,274	4,636	4,229	4,808	5,071	5,263	6,529	7,834	9,690	11,750
Thailand	1,636	1,536	2,069	2,626	1,990	2,381	2,017	2,353	2,780	3,117
Other	1,053	943	892	842	993	1,032	1,052	1,302	1,361	1,361
Total Asia	30,817	33,300	35,016	37,057	36,333	38,465	41,381	49,607	54,533	60,802
Total Developing Cts.	78,485	78,728	80,447	80,142	81,673	86,294	87,886	96,289	99,869	106,428
Total Western World	372,682	365,138	333,828	333,429	365,608	366,908	365,046	386,797	422,980	436,659

Table 12
(continued)

APPARENT CONSUMPTION OF FINISHED STEEL

thousand metric tons

	1980	1981	1982	1983	1984	1985	1986	1987	1988	1989
Albania	143	80	121	120	120	120	120	120	120	120
Bulgaria	2,260	2,314	2,434	2,566	2,337	2,412	2,379	2,483	2,121	2,108
Czechoslovakia	8,394	8,726	8,650	8,672	8,529	8,664	8,730	8,599	8,464	8,611
German Dem. Rep.	7,754	7,500	7,822	7,228	6,975	7,471	7,425	7,363	7,289	7,055
Hungary	2,940	2,981	3,016	2,934	2,782	2,807	2,938	2,902	2,680	2,371
Poland	14,876	11,902	11,156	11,481	11,940	11,804	12,523	12,405	12,155	10,567
Romania	9,748	9,275	9,450	8,931	9,597	9,075	9,869	10,261	9,789	9,951
U.S.S.R. (E)	117,813	118,512	118,206	123,842	125,318	123,769	127,523	128,915	130,311	131,800
Total Eastern Europe	163,928	161,290	160,856	165,775	167,599	166,122	171,507	173,048	172,929	172,583
Cuba	738	809	687	761	807	912	915	919	849	867
China	33,680	30,650	32,037	40,754	47,393	56,408	60,511	56,422	54,983	55,200
Other Asian C.P.E.'s	4,992	4,767	5,008	5,296	5,625	5,633	5,725	5,837	5,921	6,004
Total C.P.E.'s	203,339	197,516	198,587	212,586	221,423	229,076	238,658	236,226	234,682	234,653
World Total	576,021	562,654	532,414	546,015	587,032	595,984	603,705	623,023	657,662	671,312

Apparent Consumption of Finished Steel

million metric tons

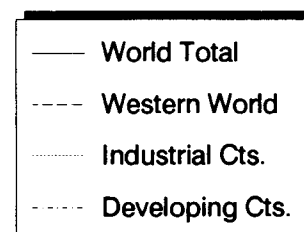
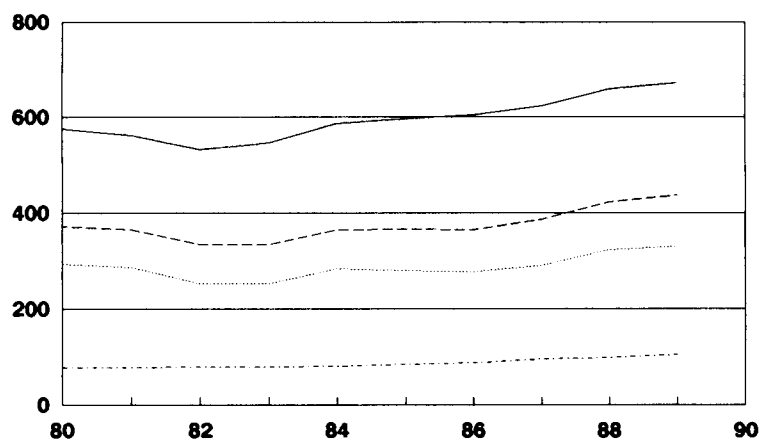
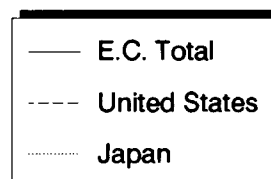
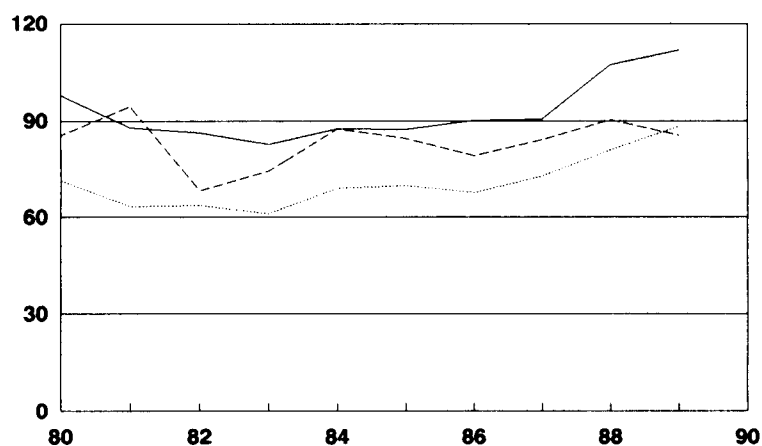


Table 13A

STEEL INTENSITY OF G.D.P.
kg crude steel consumption per US\$ at 1980 prices

	1980	1981	1982	1983	1984	1985	1986	1987	1988	1989
Belgium-Luxembourg	0.0292	0.0313	0.0280	0.0289	0.0337	0.0287	0.0279	0.0232	0.0312	0.0274
Denmark	0.0244	0.0238	0.0286	0.0175	0.0216	0.0240	0.0232	0.0206	0.0221	0.0231
France	0.0303	0.0260	0.0249	0.0220	0.0220	0.0207	0.0199	0.0198	0.0218	0.0218
F.R. Germany	0.0428	0.0400	0.0345	0.0368	0.0367	0.0357	0.0347	0.0324	0.0381	0.0371
Greece	0.0413	0.0442	0.0435	0.0520	0.0373	0.0418	0.0428	0.0440	0.0432	0.0420
Ireland	0.0248	0.0247	0.0230	0.0191	0.0199	0.0187	0.0171	0.0172	0.0210	0.0219
Italy	0.0587	0.0450	0.0465	0.0405	0.0452	0.0443	0.0447	0.0449	0.0484	0.0499
Netherlands	0.0260	0.0217	0.0218	0.0194	0.0237	0.0237	0.0223	0.0189	0.0234	0.0240
Portugal	0.0517	0.0508	0.0633	0.0491	0.0470	0.0428	0.0451	0.0535	0.0716	0.0604
Spain	0.0437	0.0386	0.0424	0.0343	0.0317	0.0296	0.0378	0.0364	0.0405	0.0454
United Kingdom	0.0300	0.0304	0.0284	0.0266	0.0254	0.0245	0.0244	0.0237	0.0266	0.0259
E.C. Total	0.0384	0.0344	0.0329	0.0307	0.0314	0.0303	0.0303	0.0292	0.0332	0.0332
Austria	0.0378	0.0332	0.0314	0.0299	0.0298	0.0274	0.0300	0.0259	0.0296	0.0323
Finland	0.0412	0.0376	0.0401	0.0342	0.0354	0.0303	0.0315	0.0291	0.0295	0.0324
Norway	0.0301	0.0248	0.0276	0.0210	0.0217	0.0210	0.0220	0.0174	0.0185	0.0152
Sweden	0.0327	0.0278	0.0284	0.0284	0.0280	0.0243	0.0256	0.0250	0.0265	0.0259
Switzerland	0.0257	0.0235	0.0196	0.0188	0.0217	0.0211	0.0218	0.0207	0.0212	0.0209
Turkey (E)	0.0579	0.0573	0.0670	0.0670	0.0801	0.0758	0.0716	0.0833	0.0791	0.0882
Yugoslavia (E)	0.0820	0.0879	0.0759	0.0794	0.0773	0.0784	0.0886	0.0961	0.0791	0.0711
Other Western Europe	0.0418	0.0392	0.0385	0.0371	0.0387	0.0364	0.0383	0.0390	0.0376	0.0377
Total Western Europe	0.0389	0.0351	0.0337	0.0317	0.0325	0.0312	0.0315	0.0307	0.0338	0.0338
Canada	0.0502	0.0514	0.0355	0.0393	0.0453	0.0439	0.0391	0.0403	0.0444	0.0400
United States	0.0426	0.0469	0.0315	0.0339	0.0375	0.0342	0.0300	0.0308	0.0322	0.0289
Japan	0.0746	0.0647	0.0615	0.0563	0.0607	0.0572	0.0531	0.0550	0.0597	0.0611
Australia	0.0455	0.0475	0.0403	0.0331	0.0390	0.0350	0.0354	0.0336	0.0357	0.0337
New Zealand	0.0273	0.0315	0.0342	0.0305	0.0319	0.0266	0.0244	0.0324	0.0358	0.0225
South Africa	0.0903	0.0870	0.0742	0.0659	0.0705	0.0625	0.0628	0.0701	0.0735	0.0837
Total Industrial Cts.	0.0459	0.0445	0.0375	0.0366	0.0392	0.0368	0.0347	0.0350	0.0379	0.0369
Argentina	0.0232	0.0181	0.0201	0.0208	0.0214	0.0157	0.0173	0.0221	0.0205	0.0178
Brazil	0.0608	0.0536	0.0469	0.0392	0.0465	0.0482	0.0543	0.0541	0.0423	0.0434
Chile	0.0294	0.0249	0.0134	0.0186	0.0248	0.0243	0.0265	0.0275	0.0325	0.0302
Mexico	0.0554	0.0565	0.0409	0.0332	0.0373	0.0381	0.0340	0.0329	0.0349	0.0353
Trinidad & Tobago	0.0120	0.0000	0.0104	0.0080	0.0106	0.0140	0.0311	0.0394	0.0380	0.0350
Venezuela	0.0473	0.0436	0.0499	0.0301	0.0379	0.0319	0.0444	0.0526	0.0535	0.0449
Israel	0.0143	0.0246	0.0256	0.0205	0.0244	0.0230	0.0268	0.0291	0.0279	0.0296
Saudi Arabia	0.0284	0.0308	0.0495	0.0506	0.0416	0.0398	0.0282	0.0272	0.0301	0.0248
Nigeria	0.0165	0.0156	0.0173	0.0106	0.0139	0.0093	0.0077	0.0101	0.0061	0.0070
Tunisia	0.0764	0.0656	0.0725	0.0747	0.0567	0.0510	0.0484	0.0442	0.0529	0.0504
Zimbabwe	0.0249	0.0303	0.0214	0.0176	0.0214	0.0236	0.0232	0.0219	0.0240	0.0284
India	0.0631	0.0765	0.0732	0.0567	0.0654	0.0638	0.0647	0.0725	0.0714	0.0730
Indonesia	0.0416	0.0399	0.0393	0.0346	0.0301	0.0265	0.0298	0.0257	0.0240	0.0210
Republic of Korea	0.1010	0.1162	0.1125	0.1136	0.1290	0.1303	0.1250	0.1378	0.1300	0.1416
Philippines	0.0467	0.0290	0.0318	0.0397	0.0226	0.0197	0.0323	0.0491	0.0540	0.0587
Singapore (E)	0.1564	0.1672	0.1844	0.1858	0.1412	0.1291	0.1291	0.1258	0.1300	0.1413
Taiwan (R.O.C.)	0.1382	0.1145	0.1016	0.1186	0.1131	0.1118	0.1243	0.1327	0.1530	0.1731
Total Developing Cts.	0.0516	0.0519	0.0504	0.0459	0.0490	0.0480	0.0501	0.0542	0.0537	0.0560
Total Western World	0.0467	0.0456	0.0393	0.0379	0.0405	0.0383	0.0368	0.0377	0.0401	0.0395

E - G.D.P. estimated from G.N.P.

Totals include listed countries only.

Table 13B

STEEL INTENSITY OF G.D.P.
kg finished steel consumption per US\$ at 1980 prices

	1980	1981	1982	1983	1984	1985	1986	1987	1988	1989
Belgium-Luxembourg	0.0232	0.0251	0.0226	0.0236	0.0279	0.0240	0.0238	0.0201	0.0272	0.0239
Denmark	0.0211	0.0214	0.0257	0.0157	0.0195	0.0217	0.0209	0.0186	0.0200	0.0209
France	0.0250	0.0218	0.0211	0.0188	0.0189	0.0182	0.0177	0.0177	0.0195	0.0195
F.R. Germany	0.0355	0.0337	0.0294	0.0319	0.0321	0.0313	0.0306	0.0288	0.0338	0.0330
Greece	0.0340	0.0366	0.0366	0.0442	0.0318	0.0359	0.0371	0.0383	0.0378	0.0369
Ireland	0.0191	0.0224	0.0208	0.0172	0.0180	0.0169	0.0154	0.0156	0.0190	0.0198
Italy	0.0491	0.0377	0.0394	0.0349	0.0392	0.0388	0.0394	0.0399	0.0433	0.0447
Netherlands	0.0202	0.0173	0.0177	0.0158	0.0195	0.0195	0.0184	0.0162	0.0204	0.0213
Portugal	0.0427	0.0417	0.0526	0.0406	0.0387	0.0354	0.0373	0.0444	0.0596	0.0506
Spain	0.0357	0.0317	0.0350	0.0285	0.0265	0.0250	0.0322	0.0313	0.0352	0.0402
United Kingdom	0.0221	0.0216	0.0216	0.0202	0.0202	0.0195	0.0192	0.0198	0.0224	0.0225
E.C. Total	0.0313	0.0281	0.0274	0.0259	0.0267	0.0260	0.0262	0.0256	0.0292	0.0294
Austria	0.0317	0.0283	0.0274	0.0265	0.0265	0.0245	0.0269	0.0232	0.0266	0.0290
Finland	0.0367	0.0336	0.0359	0.0306	0.0317	0.0271	0.0282	0.0261	0.0265	0.0290
Norway	0.0237	0.0196	0.0223	0.0172	0.0182	0.0177	0.0186	0.0147	0.0156	0.0130
Sweden	0.0241	0.0224	0.0216	0.0210	0.0212	0.0195	0.0199	0.0200	0.0207	0.0202
Switzerland	0.0211	0.0194	0.0165	0.0160	0.0185	0.0181	0.0189	0.0180	0.0185	0.0183
Turkey (E)	0.0478	0.0478	0.0566	0.0573	0.0694	0.0650	0.0626	0.0729	0.0699	0.0781
Yugoslavia (E)	0.0671	0.0727	0.0632	0.0666	0.0649	0.0659	0.0745	0.0810	0.0675	0.0608
Other Western Europe	0.0339	0.0326	0.0321	0.0310	0.0327	0.0310	0.0327	0.0335	0.0323	0.0326
Total Western Europe	0.0317	0.0288	0.0281	0.0266	0.0276	0.0268	0.0272	0.0268	0.0297	0.0299
Canada	0.0388	0.0419	0.0279	0.0317	0.0362	0.0363	0.0339	0.0366	0.0367	0.0342
United States	0.0319	0.0344	0.0255	0.0267	0.0294	0.0275	0.0249	0.0256	0.0262	0.0242
Japan	0.0674	0.0576	0.0563	0.0525	0.0564	0.0545	0.0514	0.0529	0.0556	0.0579
Australia	0.0356	0.0374	0.0320	0.0265	0.0314	0.0282	0.0286	0.0279	0.0309	0.0296
New Zealand	0.0225	0.0261	0.0288	0.0259	0.0272	0.0229	0.0212	0.0282	0.0313	0.0198
South Africa	0.0652	0.0638	0.0566	0.0531	0.0541	0.0483	0.0487	0.0491	0.0521	0.0535
Total Industrial Cts.	0.0459	0.0445	0.0375	0.0366	0.0392	0.0368	0.0347	0.0350	0.0379	0.0369
Argentina	0.0195	0.0151	0.0163	0.0158	0.0154	0.0114	0.0146	0.0176	0.0160	0.0125
Brazil	0.0499	0.0426	0.0395	0.0348	0.0405	0.0414	0.0470	0.0460	0.0386	0.0401
Chile	0.0227	0.0192	0.0103	0.0143	0.0192	0.0188	0.0205	0.0212	0.0251	0.0233
Mexico	0.0448	0.0459	0.0335	0.0280	0.0314	0.0319	0.0283	0.0277	0.0295	0.0299
Trinidad & Tobago	0.0112	0.0000	0.0088	0.0068	0.0091	0.0120	0.0269	0.0343	0.0332	0.0307
Venezuela	0.0389	0.0372	0.0431	0.0262	0.0328	0.0277	0.0384	0.0459	0.0469	0.0393
Israel	0.0118	0.0203	0.0215	0.0174	0.0208	0.0198	0.0232	0.0254	0.0244	0.0260
Saudi Arabia	0.0234	0.0256	0.0417	0.0430	0.0355	0.0342	0.0244	0.0237	0.0263	0.0218
Nigeria	0.0126	0.0120	0.0133	0.0081	0.0107	0.0093	0.0064	0.0088	0.0055	0.0059
Tunisia	0.0603	0.0514	0.0563	0.0588	0.0460	0.0392	0.0398	0.0362	0.0411	0.0413
Zimbabwe	0.0192	0.0233	0.0165	0.0135	0.0165	0.0181	0.0178	0.0168	0.0184	0.0218
India	0.0514	0.0567	0.0553	0.0482	0.0450	0.0476	0.0488	0.0569	0.0560	0.0571
Indonesia	0.0342	0.0331	0.0331	0.0294	0.0257	0.0228	0.0258	0.0223	0.0210	0.0185
Republic of Korea	0.0847	0.0981	0.0951	0.0993	0.1086	0.1116	0.1067	0.1258	0.1192	0.1311
Philippines	0.0390	0.0241	0.0265	0.0331	0.0188	0.0164	0.0269	0.0409	0.0450	0.0489
Singapore (E)	0.1288	0.1504	0.1550	0.1625	0.1165	0.0983	0.0940	0.0961	0.0988	0.1055
Taiwan (R.O.C.)	0.1152	0.0954	0.0847	0.0988	0.0942	0.0932	0.1036	0.1106	0.1275	0.1442
Total Developing Cts.	0.0424	0.0418	0.0412	0.0390	0.0396	0.0395	0.0414	0.0457	0.0457	0.0476
Total Western World	0.0454	0.0441	0.0380	0.0369	0.0392	0.0372	0.0356	0.0365	0.0389	0.0383

E - G.D.P. estimated from G.N.P.

Totals include listed countries only.

Table 14

DIRECT REDUCED IRON PRODUCTION
thousand metric tons

	1980	1981	1982	1983	1984	1985	1986	1987	1988	1989
F.R. Germany	419	484	322	70	100	100	170	200	270	353
Italy										
Sweden	122	102	106	103	120	108	111	117	122	116
Canada	880	963	497	538	500	740	690	730	770	705
United States	650	530	66	0	120	140	160	210	290	291
Japan										
New Zealand	150	150	160	150	170	170	80	0	0	480
South Africa	126	123	101	24	165	543	746	840	759	772
Total Industrial Cts.	2,347	2,352	1,252	885	1,175	1,801	1,957	2,097	2,211	2,717
Argentina	757	805	879	950	898	989	935	1,033	1,067	1,166
Brazil	255	226	226	255	245	285	295	202	195	258
Mexico	1,636	1,686	1,505	1,497	1,448	1,500	1,420	1,551	1,648	2,184
Peru	34	54	43	27	62	44	55	51	51	49
Trinidad & Tobago	0	187	237	284	239	203	337	475	598	612
Venezuela	1,636	1,608	2,155	2,418	2,490	2,633	2,938	3,152	3,096	2,773
Total Latin America	4,318	4,566	5,045	5,431	5,381	5,655	5,981	6,463	6,655	7,042
Egypt						0	31	464	759	817
Libya										90
Nigeria		0	73	156	142	242	109	131	132	133
Iran	0	0	0	0	0	30	0	0	0	40
Iraq	0	0	0	0	0	0	0	0	100	172
Qatar	420	459	452	390	500	490	490	470	495	531
Saudi Arabia			9	351	730	991	1,170	1,040	1,080	1,210
Burma	0	10	10	10	10	30	30	20	20	20
India	0	27	30	54	80	102	170	190	190	400
Indonesia	370	400	436	514	740	1,000	1,320	1,030	980	1,262
Malaysia				0	40	520	580	590	427	644
Total Developing Cts.	5,108	5,462	6,055	6,906	7,623	9,060	9,881	10,398	10,838	12,361
Total Western World	7,455	7,814	7,307	7,791	8,798	10,861	11,838	12,495	13,050	15,078
U.S.S.R.			0	20	370	420	750	1,260	1,680	1,700
World Total	7,455	7,814	7,307	7,811	9,168	11,281	12,588	13,755	14,730	16,778

Totals are of available data only.

Table 15

PRODUCTION OF PELLETS
thousand metric tons

	1980	1981	1982	1983	1984	1985	1986	1987	1988	1989
Belgium	683	770	696	569	604	613	557	500	710	588
Italy	0	0	0	0	0	0	0	0	0	0
Netherlands	3,700	3,600	3,500	3,700	3,796	4,000
Finland	287	306	333	332	338	140	0	0	0	480
Norway (E)	2,600	2,600	2,600	2,600	2,100	1,800	1,700	1,500	1,400	1,400
Sweden	6,688	4,182	3,922	4,955	6,548	8,743	8,842	9,152	9,109	10,026
Turkey	0	0	0	0	0	35	503	864	982	786
Yugoslavia	87	86	75	75	70	81	76	56	25	61
Total Western Europe	10,345	7,944	7,626	8,531	13,360	15,012	15,178	15,772	16,022	17,341
Canada	24,872	26,203	16,367	16,451	20,264	23,920	23,861	24,120	26,291	26,496
United States	65,790	71,075	33,563	36,904	50,887	47,724	37,795	45,911	55,957	57,285
Japan	4,171	3,130	3,123	3,053	3,112	3,014	2,506	2,625	3,109	3,128
Australia (E: 1988-9)	5,291	3,887	3,321	3,043	3,489	3,725	3,338	3,309	3,400	3,500 E
Total Industrial Cts.	110,469	112,239	64,000	67,982	91,112	93,395	82,678	91,737	104,779	107,750
Argentina	312	374	616	546	465	495	646	465	597	658
Brazil	10,936	17,797	15,604	14,480	22,290	22,619	24,268	24,852	26,084	26,990
Chile	3,178	3,266	3,376	3,072	3,371	3,607	3,317	3,694	4,073	3,924
Mexico	5,307	5,931	6,566	6,403	7,356	6,640	6,663	7,400	7,937	7,582
Peru	1,564	1,697	1,482	1,101	995	1,785	1,916	2,011	1,774	1,848
Venezuela	1,772	2,078	3,109	3,567	3,184	3,652	3,293	4,344	4,808	4,654
Total Latin America	23,069	31,143	30,753	29,169	37,661	38,798	40,103	42,766	45,273	45,656
Liberia (E: 1980-2)	3,500	3,500	3,500	3,500	2,600	3,000	2,700	3,060	3,215	3,000
Bahrain (E: 1988-9)	0	0	0	0	0	400	500	0	2,500	3,000 E
India	944	148	0	0	0	100	200	587	1,467	1,887
Total Developing Cts.	27,513	34,791	34,253	32,669	40,261	42,298	43,503	46,413	52,455	53,543
Total Western World	137,982	147,030	98,253	100,651	131,373	135,693	126,181	138,150	157,234	161,293
Czechoslovakia	31	100	150	200	200	223	230	230	262	283
U.S.S.R.	50,894	54,023	55,826	59,800	63,100	65,607	66,500	68,800	67,973	68,700
Total Eastern Europe	50,925	54,123	55,976	60,000	63,300	65,830	66,730	69,030	68,235	68,983
China (E: 1988-9)	2,420	2,010	2,090	2,280	2,310	2,790	3,620	4,320	4,600	4,800 E
World Total	191,327	203,163	156,319	162,931	196,983	204,313	196,531	211,500	230,069	235,076

E - estimate

Totals are of available data only.

Table 16

SINTER PRODUCTION

thousand metric tons

	1980	1981	1982	1983	1984	1985	1986	1987	1988	1989
Belgium	13,406	12,967	10,473	11,195	12,449	11,895	11,082	11,170	12,124	11,601
France	32,896	29,751	26,076	22,776	23,960	24,556	20,873	15,302	22,704	23,294
F.R. Germany	37,503	35,734	30,581	26,855	30,827	30,929	29,311	26,140	28,133	29,789
Italy	14,613	14,382	13,786	12,656	13,630	14,515	13,478	13,008	12,397	12,906
Luxembourg (C: 1988-9)	6,971	5,241	4,687	4,510	4,891	4,952	4,431	4,101	4,560	4,870
Netherlands	2,735	2,979	2,508	2,653	3,523	3,742	3,706	3,682	3,935	4,042
Portugal	372	357	247	440	444	477	492	429	452	395
Spain	8,993	9,079	8,567	8,253	7,410	7,465	6,919	6,600	5,433	6,228
United Kingdom	7,755	11,381	10,141	9,869	10,326	10,864	9,915	11,550	13,067	13,282
E.C. Total	125,244	121,871	107,066	99,207	107,460	109,395	100,207	91,982	102,805	106,407
Austria	5,664	5,785	5,346	5,551	5,866	5,696	5,259	4,814	4,431	4,775
Finland	2,854	2,940	3,005	2,809	2,854	2,637	2,761	2,837	2,981	2,252
Norway	868	1,000	711	732	627	666	620	633	673	680 E
Sweden	1,847	1,108	1,028	1,116	1,097	1,127	1,100	1,050	1,091	1,141
Turkey	2,094	2,271	2,678	2,869	3,034	3,303	2,916	3,968	4,527	3,193
Yugoslavia	3,314	3,962	3,893	4,005	4,064	4,305	3,905	3,756	3,777	3,780
Other Western Europe	16,641	17,066	16,661	17,082	17,542	17,734	16,561	17,058	17,480	15,821
Total Western Europe	141,885	138,937	123,727	116,289	125,002	127,129	116,768	109,040	120,285	122,228
Canada	2,574	2,114	1,392	2,021	2,727	2,574	2,114	1,392	1,396	1,800
United States	25,298	26,269	16,414	16,415	17,177	16,264	13,247	14,462	15,497	13,664
Japan	105,995	98,149	93,041	85,710	93,947	93,929	87,509	86,447	94,933	98,190
Australia	5,915	6,183	5,662	5,431	5,772	6,092	5,773	5,273	6,041	6,045
Total Industrial Cts.	281,667	271,652	240,236	225,866	244,625	245,988	225,411	216,614	238,152	241,927
Argentina	666	809	833	815	820	876	881	904	811	928
Brazil	12,048	10,629	12,347	14,417	18,880	20,817	21,471	21,871	24,952	24,703
Colombia	406	315	338	361	259	324	390	405	396	400 E
Mexico	1,214	1,157	1,097	1,096	1,136	1,187	1,277	1,073	936	883
Total Latin America	14,334	12,910	14,615	16,689	21,095	23,204	24,019	24,253	27,095	26,914
India	5,902	7,039	7,600	7,480	8,102	8,115	8,134	9,021	9,315	10,189
Philippines (E: 1981-5)	4,264	3,800	3,200	3,100	3,600	3,300	3,680	4,202	4,764	4,600
Republic of Korea	8,195	11,624	12,311	11,552	12,295	12,320	12,502	15,662	19,991	21,011
Taiwan (R.O.C.) (C)	2,000	2,006	4,210	4,925	4,788	4,897	5,266	5,383	8,154	8,482
Total Developing Cts.	34,695	37,379	41,936	43,746	49,880	51,836	53,601	58,521	69,319	71,196
Total Western World	316,362	309,031	282,172	269,612	294,505	297,824	279,012	275,135	307,471	313,123
Bulgaria (E)	2,622	2,700	3,000	3,000	3,000	3,196	2,900	2,600	2,287	2,365
Czechoslovakia	15,527	15,007	14,747	14,315	13,587	14,008	14,150	13,000	12,464	13,076
German Dem. Rep.	3,155	3,133	3,063	3,168	3,279	3,148	3,296	3,207	3,346	3,199
Hungary	4,344	4,106	4,224	4,001	3,591	3,322	3,342	3,023	2,875	2,900
Poland	17,714	14,366	13,168	14,632	15,127	14,586	15,618	15,401	14,054	12,993
Romania	12,701	12,527	12,014	11,529	13,797	13,570	14,021	14,000	13,880	13,002
U.S.S.R.	153,818	154,657	151,846	154,500	155,000	147,347	154,466	150,600	150,342	147,407
Total Eastern Europe	207,259	203,796	199,062	202,145	204,381	195,981	204,893	199,231	196,961	192,577
China (E: 1988-9)	57,600	52,910	56,070	58,620	66,760	68,180	72,920	79,410	83,000	83,000 E
World Total	581,221	565,737	537,304	530,377	565,646	561,985	556,825	553,776	587,432	588,700

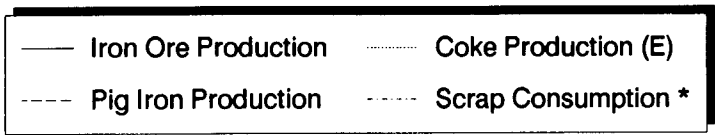
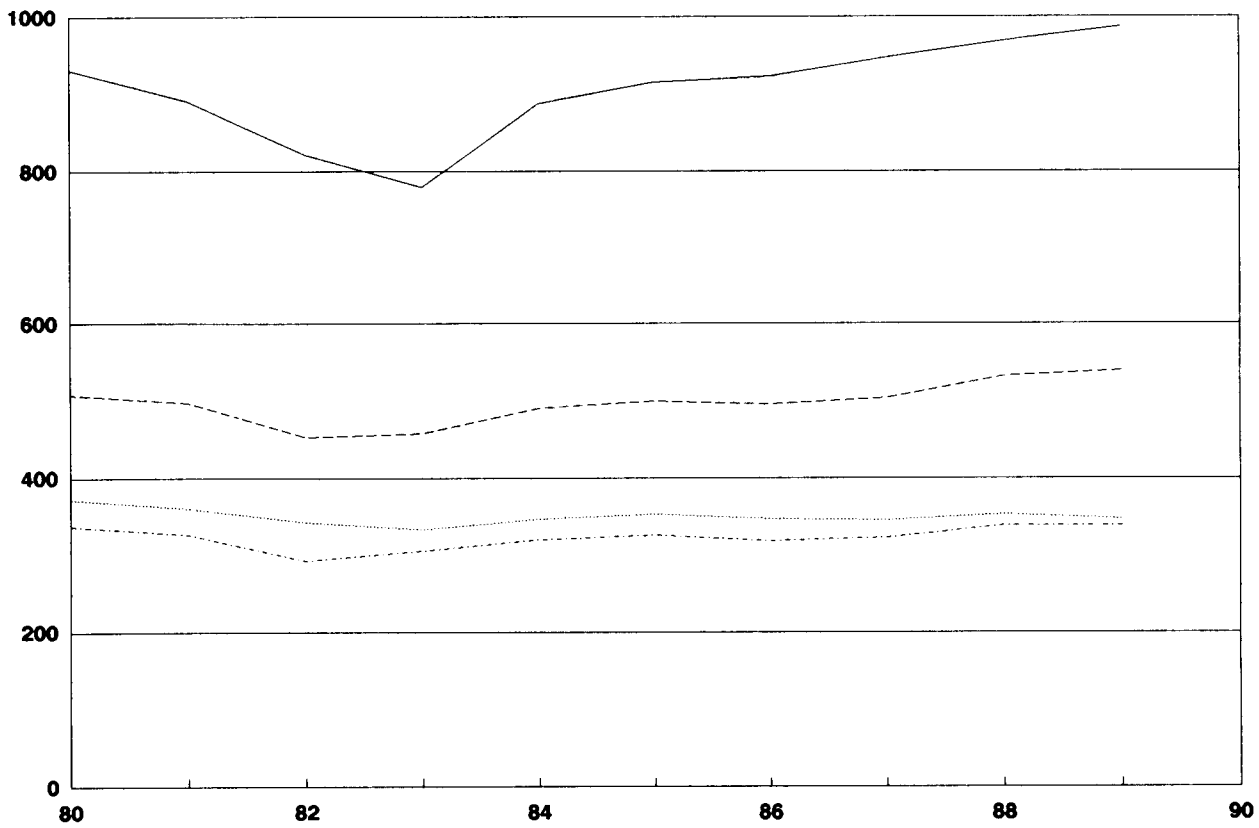
E - estimate

Totals are of available data only.

C - consumption.

World Production of Raw Materials

million metric tons



* - Based on data available. The countries included accounted for 78% of World crude steel production in 1989 - see Table 23 for details.

Table 17

PIG IRON PRODUCTION
thousand metric tons

	1980	1981	1982	1983	1984	1985	1986	1987	1988	1989
Belgium	9,900	9,809	7,831	8,068	9,011	8,747	8,046	8,239	9,184	8,918
Denmark	0	0	0	0	0	0	0	0	0	0
France	18,677	16,961	14,715	13,500	14,710	15,071	13,982	13,449	14,786	15,072
F.R. Germany	33,873	31,876	27,621	26,598	30,203	31,531	29,018	28,517	32,453	32,777
Greece	303	91	350	0	0	0	0	0	0	0
Ireland	0	0	0	0	0	0	0	0	0	0
Italy	12,149	12,259	11,537	10,313	11,631	12,063	11,898	11,335	11,375	11,795
Luxembourg	3,569	2,889	2,587	2,316	2,768	2,754	2,650	2,305	2,519	2,684
Netherlands	4,328	4,600	3,617	3,747	4,926	4,819	4,628	4,575	4,994	5,163
Portugal	370	314	222	364	474	519	525	530	545	377
Spain	6,379	6,259	5,994	5,426	5,319	5,457	4,808	4,804	4,691	5,535
United Kingdom	6,264	9,470	8,327	9,477	9,487	10,381	9,686	12,017	13,056	12,638
E.C. Total	95,812	94,528	82,801	79,809	88,529	91,342	85,241	85,771	93,603	94,959
Austria	3,485	3,477	3,115	3,320	3,745	3,704	3,349	3,451	3,665	3,823
Finland	2,019	1,965	1,944	1,898	2,034	1,901	1,978	2,063	2,173	2,284
Norway	618	570	483	565	572	610	564	360	367	270
Sweden	2,435	1,770	1,779	2,011	2,214	2,424	2,435	2,314	2,492	2,638
Switzerland	33	33	10	10	54	66	79	70	70	70 E
Turkey	2,140	2,050	2,174	2,719	2,902	3,193	3,733	4,068	4,462	3,508
Yugoslavia	2,436	2,816	2,702	2,845	2,855	3,120	3,063	2,867	2,916	2,899
Other Western Europe	13,166	12,681	12,207	13,368	14,376	15,018	15,201	15,193	16,145	15,491
Total Western Europe	108,978	107,209	95,008	93,177	102,905	106,360	100,442	100,964	109,748	110,450
Canada	10,893	9,743	8,000	8,567	9,643	9,665	9,249	9,719	9,498	10,139
United States	62,343	66,742	39,281	44,208	47,087	45,764	39,873	43,917	50,572	50,688
Japan	87,041	80,048	77,655	72,936	80,403	80,569	74,651	73,418	79,295	80,196
Australia	6,976	6,740	5,953	5,062	5,324	5,599	5,853	5,581	5,723	6,084
New Zealand	0	0	0	0	0	0	0	0	418	432
South Africa	7,218	7,365	6,762	5,215	5,531	6,010	5,774	6,317	6,171	6,513
Total Industrial Cts.	283,449	277,847	232,659	229,165	250,893	253,967	235,842	239,916	261,425	264,502
Argentina	1,027	912	1,015	909	902	1,310	1,625	1,752	1,596	2,169
Brazil	12,685	10,791	10,827	12,945	17,230	18,961	20,163	20,944	23,454	24,363
Central America	0	0	0	0	0	0	0	0	0	0
Chile	647	592	453	539	594	580	591	617	778	679
Colombia	279	233	207	241	252	234	317	326	317	297
Ecuador	0	0	0	0	0	0	0	0	0	0
Mexico	3,639	3,767	3,598	3,537	3,926	3,595	3,738	3,712	3,639	3,244
Paraguay	0	0	0	0	0	0	0	50	80	61
Peru	262	187	161	113	4	163	216	185	202	227
Trinidad & Tobago	0	0	0	0	0	0	0	0	0	0
Uruguay	0	0	0	0	0	0	0	0	0	0
Venezuela	498	418	202	169	326	441	493	473	503	489
Total Latin America	19,037	16,900	16,463	18,453	23,233	25,283	27,144	28,059	30,570	31,529

Table 17
(continued)

PIG IRON PRODUCTION
thousand metric tons

	1980	1981	1982	1983	1984	1985	1986	1987	1988	1989
Algeria	669	897	1,059	1,113	1,150	1,400	1,400	1,300	1,300	1,300 E
Egypt	1,027	965	1,080	898	962	950	1,066	1,069	1,112	1,100 E
Nigeria	0	0	0	0	0	0	0	0	0	0
Tunisia	153	158	97	147	148	142	149	163	128	140 E
Zimbabwe	786	643	478	584	400	674	644	560	545	540 E
Other Africa	20	20	20	20	20	20	20	20	20	20 E
Total Africa	2,655	2,683	2,734	2,762	2,680	3,186	3,279	3,112	3,105	3,100
Iran (E)	200	210	220	240	250	250	250	250	250	250 E
Israel	0	0	0	0	0	0	0	0	0	0 E
Qatar	0	0	0	0	0	0	0	0	0	0
Saudi Arabia	0	0	0	0	0	0	0	0	0	0
Total Middle East	200	210	220	240	250	250	250	250	250	250
Bangladesh	0	0	0	0	0	0	0	0	0	0
Hong Kong	0	0	0	0	0	0	0	0	0	0
India	8,509	9,474	9,640	9,162	9,485	9,840	10,514	10,923	11,714	12,150
Indonesia	0	0	0	0	0	0	0	0	0	0
Malaysia	0	0	0	0	0	0	0	0	0	0
Pakistan	0	130	450	490	550	803	895	905	905	910 E
Philippines	0	0	0	0	0	0	0	0	0	0
Singapore	0	0	0	0	0	0	0	0	0	0
Republic of Korea	5,577	7,925	8,443	8,024	8,763	8,833	9,003	11,057	12,578	14,846
Taiwan (R.O.C.)	1,724	1,611	2,695	3,415	3,288	3,429	3,740	3,658	5,568	5,858
Thailand	17	10	6	10	10	10	10	10	10	10 E
Total Asia	15,827	19,150	21,234	21,101	22,096	22,915	24,162	26,553	30,775	33,774
Total Developing Cts.	37,719	38,943	40,651	42,556	48,259	51,634	54,835	57,974	64,700	68,653
Total Western World	321,168	316,790	273,310	271,721	299,152	305,601	290,677	297,889	326,125	333,155
Bulgaria	1,539	1,515	1,562	1,626	1,583	1,712	1,605	1,656	1,483	1,484
Czechoslovakia	9,820	9,903	9,525	9,466	9,561	9,562	9,573	9,788	9,706	9,911
German Dem. Rep.	2,448	2,421	2,136	2,196	2,343	2,565	2,726	2,743	2,786	2,732
Hungary	2,214	2,212	2,198	2,047	2,098	2,100	2,061	2,109	2,093	1,951
Poland	11,378	8,870	8,098	9,386	9,533	9,335	10,096	10,023	9,929	9,488
Romania	9,102	8,857	8,637	8,190	9,557	9,212	9,329	9,500	8,941	9,051
U.S.S.R.	107,282	107,766	106,723	110,453	110,893	109,977	113,840	113,900	114,559	113,936
Total Eastern Europe	143,783	141,544	138,879	143,364	145,568	144,463	149,230	149,719	149,497	148,553
China	38,024	34,166	35,510	37,378	40,062	43,543	49,940	50,200	51,000	52,000 E
D.P.R. Korea (E)	5,400	5,000	5,250	5,500	5,750	5,750	5,800	5,900	5,900	5,900 E
Total C.P.E.'s	187,207	180,710	179,639	186,242	191,380	193,756	204,970	205,819	206,397	206,453
World Total	508,375	497,500	452,949	457,963	490,532	499,357	495,647	503,708	532,522	539,608

E - estimate

These figures exclude direct reduced iron.

Table 18

PIG IRON EXPORTS
thousand metric tons

	1980	1981	1982	1983	1984	1985	1986	1987	1988	1989
Belgium-Luxembourg	7	9	4	2	3	4	6	11	15	20
France	286	191	174	136	192	233	12	54	609	879
F.R. Germany	1,103	929	829	544	581	722	545	541	389	404
Italy	9	5	8	29	18	31	73	28	48	47
Netherlands	12	6	7	13	9	19	19	11	4	3
Spain	31	19	0	6	19	46	31	1	61	63
United Kingdom	56	38	34	69	61	83	65	31	23	20
E.C. Total	1,504	1,197	1,056	799	883	1,138	751	677	1,149	1,436
Austria	3	6	5	5	7	9	8	7	19	20
Finland	18	0	0	1	1	0	0	0	0	0
Norway	104	71	65	44	28	32	23	14	31	52
Sweden	180	45	30	26	3	7	9	3	12	14
Turkey	8	0	0	16	60	55	55	55	89	100 E
Yugoslavia	51	23	12	6	5	20	15	43	8	10 E
Other Western Europe	364	145	112	98	104	123	110	122	159	196
Total Western Europe	1,868	1,342	1,168	897	987	1,261	861	799	1,308	1,632
Canada	562	466	485	348	392	574	520	447	355	418
United States	66	15	49	6	51	29	43	45	65	11
Japan	15	12	61	345	292	1,085	1,074	51	43	25
Australia	515	158	300	350	100	100	70	420	149	141
South Africa	117	99	93	0	232	370	600	650	650	650 E
Total Industrial Cts.	3,143	2,092	2,156	1,946	2,054	3,419	3,167	2,413	2,570	2,876
Brazil	841	714	693	1,801	2,473	2,476	2,370	2,045	2,537	2,989
Zimbabwe	39	10	5	0	0	0	0	0	0	0 E
India	0	0	0	0	0	0	0	0	0	0 E
Indonesia	0	82	117	62	70	87	96	64	138	150 E
Republic of Korea	151	70	41	10	1	0	1	2	1	0
Total Developing Cts.	1,031	876	856	1,873	2,544	2,563	2,467	2,111	2,676	3,139
Total Western World	4,174	2,968	3,011	3,819	4,599	5,982	5,634	4,524	5,246	6,015
Bulgaria	34	8	16	38	262	80	52	69	8	0
Czechoslovakia	0	0	0	0	0	0	0	115	240	0
German Dem. Rep.	27	27	6	9	11	6	6	7	5	5 E
Hungary	2	0	0	5	21	0	0	0	0	0
Poland	0	0	0	0	0	0	0	0	0	0
U.S.S.R. (E)	4,500	4,500	4,750	4,750	4,750	4,465	5,512	5,963	6,141	6,517
Total Eastern Europe	4,563	4,535	4,772	4,802	5,044	4,551	5,570	6,154	6,394	6,522
China	87	343	1,252	68	7	4	0	268	250	250 E
D.P.R. Korea	79	66	51	31	68	69	70	66	65	65 E
World Total	8,903	7,912	9,086	8,720	9,718	10,606	11,274	11,012	11,955	12,852

E - estimate

Table 19

PIG IRON IMPORTS
thousand metric tons

	1980	1981	1982	1983	1984	1985	1986	1987	1988	1989
Belgium-Luxembourg	97	92	91	48	94	113	122	132	254	325
Denmark	44	51	66	32	43	62	80	82	80	119
France	452	406	370	365	412	480	372	386	279	273
F.R. Germany	344	270	276	235	275	275	335	327	238	278
Greece	10	17	14	17	7	9	20	10	10	77
Ireland	2	2	2	0	1	2	2	1	4	2
Italy	733	352	417	324	417	341	450	592	749	897
Netherlands	64	44	43	38	54	50	57	56	72	76
Portugal	42	75	49	55	48	41	34	19	23	25 E
Spain	55	41	104	100	138	178	140	115	138	180
United Kingdom	192	129	168	106	103	118	133	125	193	64
E.C. Total	2,035	1,479	1,600	1,320	1,592	1,669	1,745	1,845	2,039	2,316
Austria	103	82	78	38	51	55	44	42	43	67
Finland	45	25	23	15	12	20	19	17	14	19
Norway	15	15	10	10	8	9	7	7	2	5
Sweden	46	37	58	38	39	47	57	51	65	48
Switzerland	99	83	82	80	80	70	60	60	60	60 E
Turkey	5	1	0	68	43	50	125	125	144	150 E
Yugoslavia	49	71	99	65	66	55	65	27	39	50 E
Other Western Europe	362	314	350	314	299	306	377	329	368	398
Total Western Europe	2,397	1,793	1,950	1,634	1,891	1,975	2,122	2,174	2,406	2,714
Canada	2	7	2	5	5	10	12	10	9	4
United States	363	393	292	220	637	307	268	322	635	443
Japan	781	1,086	1,381	1,001	823	748	968	1,442	2,917	2,288
South Africa	0	0	0	0	0	0	0	0	0	0 E
Total Industrial Cts.	3,543	3,279	3,625	2,860	3,356	3,040	3,370	3,948	5,967	5,449
Argentina	153	10	122	205	177	32	0	0	91	100 E
India	0	117	427	204	0	0	35	30	34	164
Indonesia	36	75	84	88	96	81	101	62	75	80 E
Republic of Korea	7	64	72	105	166	99	386	673	801	1,063
Philippines	21	2	4	1	0	0	22	71	20	20 E
Singapore	33	63	103	57	9	47	60	14	120	178
Taiwan (R.O.C.)	12	188	148	224	218	178	302	628	738	583
Thailand	5	27	15	13	15	16	15	15	15	15 E
Total Developing Cts.	267	546	975	897	681	453	921	1,493	1,894	2,203
Total Western World	3,810	3,825	4,600	3,757	4,037	3,493	4,291	5,441	7,861	7,653
Bulgaria	413	435	400	408	665	412	425	469	369	261
Czechoslovakia	809	843	901	780	745	869	809	728	675	672
German Dem. Rep.	752	721	945	890	904	1,103	1,158	1,369	1,350	1,300 E
Hungary	257	291	235	295	281	274	255	263	352	400 E
Poland	1,374	1,449	1,273	1,133	1,188	1,330	1,391	1,338	1,282	1,203
Romania	633	282	280	210	165	117	100	100	100	100 E
U.S.S.R. (E)	30	30	30	30	30	30	30	30	106	0
Total Eastern Europe	4,268	4,051	4,064	3,746	3,978	4,135	4,168	4,297	4,234	3,936
China	353	12	0	749	1,119	2,911	2,804	1,400	1,400	1,400 E
Total C.P.E.'s	4,621	4,063	4,064	4,495	5,097	7,046	6,972	5,697	5,634	5,336
World Total	8,431	7,888	8,664	8,252	9,134	10,539	11,263	11,138	13,495	12,989

E - estimate

Table 20

IRON ORE PRODUCTION
thousand metric tons

	1980	1981	1982	1983	1984	1985	1986	1987	1988	1989
Belgium	0	0	0	0	0	0	0	0	0	0
Denmark	8	0	0	0	0	0	0	0	0	0
France	29,200	21,489	19,670	16,180	15,030	14,480	12,560	11,566	9,872	9,319
F.R. Germany	1,948	1,575	1,314	979	979	1,034	717	247	70	102
Greece (E: 1986/90)	1,500	1,280	515	1,300	1,452	1,712	1,500	1,500	1,500	1,500
Ireland	0	0	0	0	0	0	0	0	0	0
Italy	216	120	10	0	0	0	0	0	0	0
Luxembourg	605	492	40	40	0	0	0	0	0	0
Netherlands	0	0	0	0	0	0	0	0	0	0
Portugal	57	37	27	36	36	73	50	30	25	15 E
Spain	9,227	8,483	8,261	7,940	7,961	6,463	6,054	4,492	4,262	4,610
United Kingdom	916	731	470	384	379	274	289	263	224	32
E.C. Total	43,677	34,207	30,307	26,859	25,837	24,036	21,170	18,098	15,953	15,578
Austria	3,200	3,048	3,330	3,540	3,600	3,300	3,120	3,050	2,300	2,410
Finland	1,009	1,060	1,086	1,046	1,040	914	643	648	587	36
Norway	3,880	4,068	3,270	3,540	3,840	3,470	3,660	3,140	2,644	2,358
Sweden	27,174	23,377	16,138	13,534	18,122	20,265	20,473	19,707	20,447	21,763
Turkey	2,707	2,983	3,083	3,501	3,958	4,573	4,705	5,213	5,443	4,091
Yugoslavia	4,504	4,793	5,105	5,018	5,315	5,478	6,618	5,983	5,543	4,438
Other Western Europe	42,474	39,329	32,012	30,179	35,875	38,000	39,219	37,741	36,964	35,096
Total Western Europe	86,151	73,536	62,319	57,038	61,712	62,036	60,389	55,839	52,917	50,674
Canada	48,753	51,985	35,592	33,326	39,930	39,798	36,679	36,520	40,409	40,400
United States	70,727	75,188	36,000	38,574	52,097	49,277	39,613	46,992	56,444	57,872
Japan	478	441	362	298	331	360	293	415	277	251
Australia	99,160	87,880	91,020	73,740	98,000	96,150	97,310	105,310	99,450	108,980
New Zealand	3,160	3,480	2,980	2,200	2,290	2,520	2,580	2,290	2,640	2,600
South Africa	25,738	25,300	24,600	16,605	24,647	24,414	24,483	22,008	25,248	29,958
Total Industrial Cts.	334,167	317,810	252,873	221,781	279,007	274,555	261,347	269,374	277,385	290,735
Argentina	412	382	583	590	572	578	788	844	1,162	580
Brazil	113,024	97,850	93,147	88,695	111,311	128,200	129,500	134,700	145,040	153,740
Chile	8,960	7,650	6,356	5,809	6,685	6,534	6,981	6,637	7,280	8,470
Colombia	491	412	445	435	442	440	508	614	620	600
Mexico	8,149	8,736	8,795	7,888	10,544	8,103	7,581	7,374	7,987	7,400
Peru	5,870	6,250	6,110	4,360	4,150	5,140	5,330	5,410	4,410	4,170
Venezuela	13,681	13,179	11,424	9,136	12,723	14,710	16,207	17,197	18,218	18,052
Total Latin America	150,587	134,459	126,860	116,913	146,427	163,705	166,895	172,776	184,717	193,012

Table 20
(continued)

IRON ORE PRODUCTION
thousand metric tons

	1980	1981	1982	1983	1984	1985	1986	1987	1988	1988
Algeria	3,454	3,481	3,892	3,684	3,664	3,376	3,359	3,382	3,120	2,750
Angola	0	0	0	0	0	0	0	0	0	0
Egypt	1,865	2,015	2,155	2,007	1,955	2,066	2,013	1,112	2,274	2,493
Liberia	18,250	19,540	18,000	15,410	16,100	16,120	15,600	13,810	12,810	12,300
Mauritania	8,940	8,270	8,210	6,600	9,100	9,200	9,170	9,000	9,780	12,000
Morocco	78	73	224	252	250	140	200	300	120	120
Sierra Leone	0	0	10	360	420	70	0	0	0	0
Tunisia	384	400	270	313	309	307	310	290	230	260
Zimbabwe		1,386	1,083	1,168	1,226	1,419	1,502	1,437	1,339	738
Total Africa	32,971	35,165	33,844	29,794	33,024	32,698	32,154	29,331	29,673	30,661
India	40,682	41,122	41,997	37,584	40,764	44,186	47,805	48,420	49,961	51,434
Republic of Korea	434	457	426	553	502	561	525	500	435	422
Malaysia	372	530	400	100	160	160	200	160	200	200
Philippines	0	0	0	0	0	0	0	0	0	0
Thailand	84	60	30	70	70	100	40	100	100	160
Total Asia	41,572	42,169	42,853	38,307	41,496	45,007	48,570	49,180	50,696	52,216
Total Developing Cts.	225,130	211,793	203,557	185,014	220,947	241,410	247,619	251,287	265,086	275,889
Total Western World	559,297	529,603	456,430	406,795	499,954	515,965	508,966	520,661	542,471	566,624
Bulgaria	1,886	1,754	1,552	1,803	2,063	1,985	2,179	1,857	1,826	1,613
Czechoslovakia	1,927	1,935	1,861	1,903	1,869	1,824	1,784	1,798	1,773	1,780
German Dem. Rep.	51	41	41	40	36	0	0	0	0	0
Hungary	198	196	214	215	193	184	0	0	0	0
Poland	104	105	49	10	11	12	9	6	6	7
Romania	2,333	2,304	2,146	1,987	1,916	2,287	2,431	2,281	2,000	2,000
U.S.S.R.	244,762	242,416	244,410	245,189	247,104	247,700	249,976	250,900	248,000	241,348
Total Eastern Europe	251,261	248,751	250,273	251,147	253,192	253,992	256,379	256,842	253,605	246,748
China	112,580	104,590	107,320	113,660	126,710	137,830	149,450	161,420	164,000	165,000 E
D.P.R. Korea (E)	8,200	8,000	8,000	8,000	8,000	8,000	8,000	8,000	8,000	8,500
Total C.P.E.'s	372,041	361,341	365,593	372,807	387,902	399,822	413,829	426,262	425,605	420,248
World Total	931,338	890,944	822,023	779,602	887,856	915,787	922,795	946,923	968,076	986,872

E - estimate

Table 21

IRON ORE EXPORTS
thousand metric tons

	1980	1981	1982	1983	1984	1985	1986	1987	1988	1989
Belgium-Luxembourg	60	19	0	1	0	15	1	3	7	11
Denmark	9	9	15	12	7	7	5	3	4	2
France	8,653	6,378	5,837	5,031	4,752	4,628	4,169	3,740	3,726	3,462
F.R. Germany	3	6	6	8	3	3	5	6	20	7
Italy	0	0	1	1	0	1	0	0	0	0
Netherlands	274	240	149	14	22	55	49	105	223	127
Portugal	4	0	0	0	2	0	0	2	0	0
Spain	2,088	1,147	1,869	1,579	1,973	2,128	1,791	1,991	2,282	1,632
United Kingdom	2	20	1	1	0	6	1	1	2	2
E.C. Total	11,093	7,819	7,878	6,647	6,759	6,843	6,021	5,851	6,264	5,244
Austria	0	0	0	0	1	0	8	1	0	0
Finland	15	23	0	0	0	0	0	0	0	0
Norway	2,722	3,482	2,166	2,945	3,083	2,578	2,532	2,530	1,757	1,987
Sweden	20,998	17,703	12,597	14,194	17,615	18,303	17,133	16,762	17,530	17,462
Yugoslavia	0	29	21	0	0	0	0	0	0	8
Other Western Europe	23,735	21,237	14,784	17,139	20,699	20,881	19,673	19,293	19,287	19,457
Total Western Europe	34,828	29,056	22,662	23,786	27,458	27,724	25,694	25,144	25,551	24,701
Canada	38,992	41,452	30,073	25,528	30,737	32,216	30,995	29,662	30,523	30,222
United States	5,781	5,635	3,229	3,841	5,073	5,114	4,553	5,093	5,285	5,365
Australia	83,500	74,500	75,400	76,900	88,700	88,000	82,600	80,600	98,300	108,100
New Zealand	3,219	2,824	2,299	2,462	2,200	2,120	2,217	1,791	1,464	1,400 E
South Africa	13,140	13,714	11,356	7,811	11,870	10,226	8,850	8,802	11,503	14,566
Total Industrial Cts.	179,460	167,181	145,019	140,328	166,038	165,400	154,909	151,092	172,626	184,354
Brazil	78,958	85,798	80,444	69,008	87,179	89,394	91,603	95,332	112,815	118,436
Chile	7,591	6,830	5,502	4,719	5,232	4,816	4,846	5,329	6,397	7,422
Peru	4,227	5,348	4,612	4,200	4,091	5,242	4,360	4,430	4,668	4,014
Venezuela	11,723	12,405	6,616	6,245	8,456	9,032	10,027	11,905	12,289	14,439
Total Latin America	102,499	110,381	97,174	84,172	104,958	108,484	110,836	116,996	136,169	144,311
Algeria	1,432	1,507	1,444	1,302	1,051	7	48	13	0	20
Angola	0	0	0	100	0	0	0	0	0	0
Liberia	17,199	20,694	16,304	15,704	16,870	16,100	13,940	13,510	13,779	12,747
Mauritania	8,725	8,860	7,753	7,385	9,526	9,333	8,929	9,002	10,005	11,138
Morocco	0	5	0	0	0	0	0	0	80	82
Sierra Leone	0	0	0	355	400	80	0	0	0	0
Total Africa	27,356	31,066	25,501	24,846	27,847	25,520	22,917	22,525	23,864	23,987
India	26,194	23,927	25,359	22,001	25,696	28,840	32,031	28,981	32,079	33,479
Philippines (E: 1981-5)	4,264	3,800	3,200	3,100	3,600	3,300	3,680	4,202	4,764	4,600
Total Asia	30,458	27,727	28,559	25,101	29,296	32,140	35,711	33,183	36,843	38,079
Total Developing Cts.	160,313	169,174	151,234	134,119	162,101	166,144	169,464	172,704	196,876	206,377
Total Western World	339,773	336,355	296,253	274,447	328,139	331,544	324,373	323,796	369,502	390,731
U.S.S.R.	46,873	44,132	42,836	42,805	45,922	43,880	46,168	45,433	43,063	39,880
World Total	386,646	380,487	339,089	317,252	374,061	375,424	370,541	369,229	412,565	430,611

E - estimate

Table 22

IRON ORE IMPORTS
thousand metric tons

	1980	1981	1982	1983	1984	1985	1986	1987	1988	1989
Belgium-Luxembourg	22,182	21,148	18,613	17,519	19,628	18,997	18,056	18,385	20,796	19,787
Denmark	3	127	183	63	1	2	3	8	3	6
France	18,643	16,511	14,943	12,553	16,088	16,220	16,191	15,056	18,727	19,955
F.R. Germany	49,834	44,288	38,910	35,497	42,568	45,007	41,632	39,583	45,170	47,170
Greece	288	0	0	0	0	0	0	0	0	0
Ireland	0	0	0	0	0	0	0	1	2	3
Italy	16,912	15,196	16,066	13,798	19,240	18,294	17,601	16,523	16,200	18,201
Netherlands	7,586	6,659	6,159	4,979	7,238	8,507	7,066	7,049	7,562	8,153
Portugal	495	524	263	471	375	683	543	764	477	689
Spain	4,757	4,687	4,620	4,202	4,220	5,023	4,287	5,767	5,645	7,124
United Kingdom	8,530	14,643	10,572	13,169	14,160	15,405	14,558	18,028	17,867	19,179
E.C. Total	129,230	123,783	110,329	102,251	123,518	128,138	119,937	121,164	132,448	140,268
Austria	3,336	3,423	3,241	2,391	3,890	3,684	3,204	3,311	4,164	4,192
Finland	1,736	1,496	1,494	1,300	1,857	1,756	1,987	2,261	2,385	3,079
Norway	87	11	48	226	40	230	18	21	193	23
Sweden	1	1	5	19	39	68	67	70	129	254
Switzerland	49	50	6	8	10	6	11	9	12	0
Turkey	1,231	728	1,064	1,546	1,849	1,747	2,428	1,532	2,369	2,243
Yugoslavia	1,640	1,360	1,477	1,568	1,566	2,180	1,347	1,081	1,486	2,305
Other Western Europe	6	16	12	13	16	23	25	17	23	17
Other Western Europe	8,086	7,085	7,347	7,071	9,267	9,694	9,087	8,302	10,761	12,113
Total Western Europe	137,316	130,868	117,676	109,322	132,785	137,832	129,024	129,466	143,209	152,381
Canada	5,875	5,792	3,357	4,013	4,947	5,800	5,367	5,213	4,791	5,348
United States	25,459	28,787	14,914	13,540	17,436	16,024	17,017	16,867	20,126	19,606
Australia	47	47	91	52	52	24	59	42	469	1,872
Japan	133,721	123,362	121,808	109,153	125,372	124,513	115,234	112,034	123,377	127,709
Total Industrial Cts.	302,418	288,856	257,846	236,080	280,592	284,193	266,701	263,622	291,972	306,916
Argentina	1,893	2,013	1,913	1,691	2,199	2,459	3,182	3,342	3,131	3,816
Mexico	0	0	0	0	0	2	100	45	459	660
Qatar (E: 1985-9)	720	686	715	580	752	840	800	700	800	900 E
Saudi Arabia	49	43	96	288	965	1,044	1,385	1,478	1,245	1,300 E
United Arab Emirates	200	75	190	170	100	100	180	160	140	150 E
Nigeria		22	215	227	353	393	0	63	143	180 E
Tunisia				19	11	47	25	51	62	70 E
Indonesia (E: 1988-9)	300	701	121	128	198	132	170	210	400	2,000 E
Malaysia	0	69	25	28	414	831	1,026	819	452	912
Republic of Korea	8,681	11,201	11,793	11,497	11,962	12,620	12,394	15,987	18,710	21,635
Pakistan	0	244	708	765	1,188	1,200	1,300	800	1,000	1,100 E
Philippines (E: 1981-9)	4,651	3,800	3,300	3,200	3,600	3,300	3,700	4,000	4,400	4,200
Taiwan (R.O.C.)	2,873	2,413	4,106	5,004	5,228	4,939	5,358	6,140	8,477	9,200
Total Developing Cts.	19,367	21,267	23,182	23,597	26,970	27,907	29,620	33,795	39,419	46,123
Total Western World	321,785	310,123	281,028	259,677	307,562	312,100	296,321	297,417	331,391	353,039

Table 22
(continued)

IRON ORE IMPORTS
thousand metric tons

	1980	1981	1982	1983	1984	1985	1986	1987	1988	1989
Bulgaria	2,225	2,280	2,360	2,313	2,286	2,215	2,248	2,308	2,112	1,920
Czechoslovakia	12,819	15,682	15,290	15,305	15,024	11,268	11,264	10,366	10,058	9,765
German D.R. (E: 1986-9)	3,796	4,245	3,116	2,971	3,179	4,324	4,100	4,300	4,200	4,000 E
Hungary	3,286	3,765	3,757	3,967	4,170	2,382	3,414	3,403	2,885	3,263
Poland	20,150	15,870	13,493	13,787	17,127	16,973	16,644	17,116	16,668	13,441
Romania (E: 1987-8)	15,984	15,016	14,398	14,477	14,963	15,207	16,417	14,800	14,500	13,626
U.S.S.R.	0	0	0	0	0	0	0	0	0	0
Total Eastern Europe	58,260	56,858	52,414	52,820	56,749	52,369	54,087	52,293	50,423	46,015
China	7,524	3,336	3,451	4,385	5,970	10,114	12,005	12,098	12,400	12,593
D.P.R. Korea (E)	289	70	485	112	200	300	500	600	700	700 E
Total C.P.E.'s	66,073	60,264	56,350	57,317	62,919	62,783	66,592	64,991	63,523	59,308
World Total	387,858	370,387	337,378	316,994	370,481	374,883	362,913	362,408	394,914	412,347

E - estimate

Table 23

SCRAP CONSUMPTION
thousand metric tons

	1980	1981	1982	1983	1984	1985	1986	1987	1988	1989
Belgium	3,688	3,749	4,142	3,157	3,520	3,112	2,581	2,502	2,999	2,915
Denmark	811	688	626	584	651	595	704	626	652	631
France	10,254	9,495	8,549	8,614	8,660	8,509	8,550	8,639	9,272	9,383
F.R. Germany	20,322	19,624	17,544	17,864	18,606	18,613	17,050	16,161	17,472	17,341
Greece	900	900	900	900	956	1,064	1,107	1,012	1,077	1,071
Ireland		37	69	158	189	230	233	246	303	362
Italy	18,847	16,929	15,958	15,153	16,405	16,480	15,699	15,721	16,417	16,500
Luxembourg	1,577	1,323	1,315	1,368	1,685	1,598	1,491	1,325	1,476	1,415
Netherlands	1,837	1,779	1,446	1,458	1,630	1,504	1,454	1,308	1,170	1,020
Portugal (E: 1988-9)	512	435	466	553	565	550	375	393	400	450 E
Spain	9,048	9,011	9,111	9,793	9,898	10,693	8,737	8,326	8,722	9,203
United Kingdom	9,296	10,363	9,557	9,635	9,619	8,369	7,826	8,203	8,866	9,049
E.C. Total	77,092	74,333	69,683	69,237	72,384	71,317	65,807	64,462	68,826	69,340
Austria	1,733	1,733	1,639	1,630	1,679	1,525	1,465	1,473	1,466	1,506
Finland	769	732	688	708	754	760	759	739	807	850
Norway	477	507	487	523	579	542	460	632	661	496
Sweden	2,788	2,780	2,856	2,894	3,200	3,064	2,928	2,928	2,964	3,000 E
Turkey	650	800	1,224	1,575	1,500	1,771	2,500	3,400	4,200	4,500 E
Yugoslavia	2,075	2,108	2,037	2,208	2,250	2,219	2,289	2,221	2,127	2,200 E
Other Western Europe	8,492	8,660	8,931	9,538	9,962	9,881	10,401	11,393	12,225	12,552
Total Western Europe	85,584	82,993	78,614	78,775	82,346	81,198	76,208	75,855	81,051	81,892
Canada	8,523	7,469	5,680	6,319	7,500	7,605	7,253	7,718	7,476	7,790
United States	75,940	77,934	51,153	56,048	59,604	63,950	59,743	61,963	69,692	66,320
Japan	43,809	39,592	38,857	40,160	43,485	44,170	40,260	40,622	42,976	45,836
Australia	2,276	2,279	1,837	1,697	1,962	2,069	1,990	1,780	1,522	1,706
Total Industrial Cts.	213,856	207,988	174,304	181,302	192,935	196,923	183,464	186,158	201,195	201,838
Brazil	6,468	5,490	5,103	5,567	6,324	6,998	7,198	7,319	7,676	8,032
Republic of Korea	5,043	5,080	5,876	6,629	7,372	8,068	8,816	8,857	9,797	10,323
Czechoslovakia	8,523	7,479	7,426	7,861	7,579	7,685	7,640	7,700	8,127	7,683
German Dem. Rep.	5,292	5,276	5,125	5,155	5,243	5,672	5,599	5,739	5,069	5,101
Hungary	2,293	2,200	2,219	2,218	2,454	2,498	2,642	2,470	2,236	2,018
Poland	11,856	10,254	9,674	10,372	10,543	8,744	9,345	9,266	9,128	9,100 E
U.S.S.R.	84,500	84,000	83,700	87,100	88,300	90,100	94,500	95,200	95,400	95,000 E
Total Eastern Europe	112,464	109,209	108,144	112,706	114,119	114,699	119,726	120,375	119,960	118,902
World Total	337,831	327,767	293,427	306,205	320,750	326,688	319,203	322,709	338,627	339,094

E - estimate

Totals are of available data only.

Table 24

SCRAP EXPORTS
thousand metric tons

	1980	1981	1982	1983	1984	1985	1986	1987	1988	1989
Belgium-Luxembourg	537	578	498	682	774	736	658	751	904	1,045
Denmark	100	185	118	175	234	270	183	223	298	280
France	3,312	3,184	3,082	3,227	4,105	3,961	3,161	3,228	3,703	4,285
F.R. Germany	3,077	3,407	2,867	2,977	3,268	3,407	3,418	4,218	4,597	4,847
Greece	0	1	1	1	1	1	1	1	3	3
Ireland	84	73	59	21	43	50	41	26	32	34
Italy	8	23	17	18	19	10	7	15	28	30
Netherlands	1,194	1,252	1,179	1,522	1,680	1,835	1,989	2,244	2,650	2,773
Portugal	5	5	9	10	9	16	11	7	13	15 E
Spain	1	1	1	1	4	1	1	16	29	60
United Kingdom	2,805	3,367	3,073	3,794	4,316	4,520	3,837	3,306	3,609	3,250
E.C. Total	11,123	12,076	10,904	12,428	14,453	14,807	13,307	14,035	15,867	16,621
Austria	13	12	9	13	21	32	22	92	47	96
Finland	0	0	0	0	10	10	0	0	0	1
Norway	38	32	32	36	21	9	8	11	21	20
Sweden	14	14	18	21	113	22	29	44	87	100 E
Switzerland	64	128	105	149	107	100	100	100	100	100 E
Turkey	0	0	0	0	3	4	3	3	7	10 E
Yugoslavia	45	69	63	70	142	173	158	367	362	210 E
Other	9	3	10	15	24	20	16	14	16	40 E
Other Western Europe	183	258	237	304	441	370	336	631	641	577
Total Western Europe	11,306	12,334	11,141	12,732	14,894	15,177	13,643	14,666	16,507	17,197
Canada	785	573	628	875	795	842	839	932	1,670	890
United States	10,131	5,820	6,172	6,822	8,617	9,025	10,617	9,605	9,160	11,149
Japan	159	187	174	116	147	166	461	366	416	586
Australia	708	498	554	588	445	379	536	922	989	1,154
Total Industrial Cts.	23,089	19,412	18,669	21,133	24,897	25,589	26,097	26,491	28,743	30,976
Hong Kong	330	364	297	330	319	319	252	250	250	250 E
India (E from 1978)	5	5	5	5	5	5	5	5	5	5 E
Indonesia	1	0	0	1	0	31	7	3	5	5 E
Republic of Korea	10	25	141	285	124	54	76	47	26	19
Malaysia	10	12	6	13	20	22	46	44	50	50 E
Philippines	2	1	2	1	1	0	1	1	2	2
Singapore	5	2	8	119	109	167	91	156	260	238
Taiwan (R.O.C.)	13	124	414	355	283	445	252	238	276	160
Thailand	1	1	8	1	4	4	4	4	6	5 E
Total Developing Cts.	377	534	881	1,110	865	1,047	733	748	880	734
Total Western World	23,466	19,946	19,550	22,243	25,762	26,636	26,830	27,239	29,623	31,710
Bulgaria	155	79	57	38	48	38	4	35	35	35 E
German Dem. Rep.	7	7	7	8	10	5	5	6	5	5 E
Hungary	31	32	53	50	79	27	6	107	151	150 E
Poland	0	0	0	0	0	0	0	0	0	0 E
U.S.S.R. (E:1987)	2,505	2,681	2,859	3,370	3,407	3,315	4,088	3,700	3,231	2,732
Total Eastern Europe	2,698	2,799	2,976	3,466	3,544	3,385	4,103	3,848	3,422	2,922
World Total	26,164	22,745	22,526	25,709	29,306	30,021	30,933	31,087	33,045	34,632

E - estimate

Table 25

SCRAP IMPORTS
thousand metric tons

	1980	1981	1982	1983	1984	1985	1986	1987	1988	1989
Belgium-Luxembourg	859	956	887	1,045	1,672	1,490	1,222	1,583	1,900	1,966
Denmark	217	180	88	67	132	48	121	89	117	105
France	456	347	276	307	407	461	353	519	815	875
F.R. Germany	1,511	1,343	1,296	1,298	1,765	1,616	1,382	1,195	1,407	1,233
Greece	239	288	434	520	328	313	455	653	388	397
Ireland	8	4	2	70	88	136	122	149	180	220
Italy	7,410	5,540	5,571	4,446	5,486	5,777	4,746	4,911	5,200	6,012
Netherlands	154	238	221	364	478	586	849	1,037	769	1,107
Portugal	149	85	125	108	120	105	103	119	179	180 E
Spain	4,386	4,005	4,762	4,742	5,018	6,146	4,340	4,266	4,505	4,492
United Kingdom	25	21	37	11	32	51	47	73	91	85
E.C. Total	15,414	13,007	13,699	12,978	15,526	16,729	13,740	14,593	15,551	16,672
Austria	143	170	381	219	363	239	115	69	102	88
Finland	106	62	51	37	33	113	64	54	16	33
Norway	53	24	4	15	13	11	6	32	164	61
Sweden	76	247	529	450	839	885	698	789	799	800 E
Switzerland	137	113	107	147	273	240	240	240	240	240 E
Turkey	346	525	748	1,074	1,038	1,148	1,799	2,830	3,037	3,200 E
Yugoslavia	396	479	508	738	781	729	651	689	746	700 E
Other Western Europe	1,257	1,620	2,328	2,680	3,340	3,365	3,573	4,703	5,104	5,122
Total Western Europe	16,671	14,627	16,027	15,658	18,866	20,094	17,313	19,296	20,655	21,795
Canada	1,015	838	501	669	1,137	578	395	415	1,186	1,460
United States	506	510	430	581	524	555	656	765	942	1,016
Japan	2,986	1,791	2,025	3,906	4,018	3,254	3,224	2,358	1,791	1,157
Total Industrial Cts.	21,178	17,766	18,983	20,814	24,544	24,481	21,589	22,834	24,574	25,427
Brazil	22	7	3	10	31	104	491	138	87	252
Mexico	974	784	422	394	454	660	442	464	563	283
Hong Kong	93	94	64	27	28	20	33	20	20	20 E
India	99	596	591	804	1,000	1,800	1,921	1,800	1,846	2,047
Indonesia	39	63	219	261	243	191	476	382	585	600 E
Republic of Korea	1,910	1,661	2,424	3,185	3,217	3,532	4,108	3,961	3,920	4,089
Malaysia	3	55	25	30	48	34	4	222	1	1 E
Philippines	9	9	25	0	2	1	85	109	94	152
Singapore	172	78	93	95	79	38	28	123	170	49
Taiwan (R.O.C.)	1,232	883	673	768	609	715	1,241	766	1,236	1,553
Thailand	338	417	390	641	494	658	660	750	1,158	1,200 E
Total Developing Cts.	4,891	4,647	4,929	6,215	6,205	7,752	9,489	8,735	9,680	10,246
Total Western World	26,070	22,413	23,912	27,030	30,749	32,233	31,077	31,568	34,253	35,673
German Dem. Rep.	908	693	455	672	1,035	886	986	903	900	900 E
Hungary	4	144	14	28	20	14	8	14	5	10 E
Poland	227	53	5	5	7	5	5	6	3	5
Romania	56	0	0	0	0	0	0	0	0	0 E
Total Eastern Europe	1,195	890	474	705	1,062	905	999	923	908	915
China	0	0	0	0	249	362	465	498	485	470 E
World Total	27,265	23,303	24,386	27,735	32,059	33,500	32,542	32,989	35,646	37,058

E - estimate



EXPLANATORY NOTES

Table Nos.

Production

- 1-3 Crude Steel Production is defined as the total output of usable ingots, continuously cast semi-finished products, and liquid steel for castings.

Deliveries

- 6 The figures show the total deliveries of the domestic steel industry, to both home and export markets. Due to differences in national statistical systems, the various countries report different ranges of steel products. Consequently these delivery figures are not internationally comparable: for example a country which reported deliveries of tubes and wire would show correspondingly lower deliveries of the hot-rolled products which had been used in their manufacture.

Trade

- 7-9 Trade figures are based on a broad definition of steel industry products, including ingots and semi-finished products; hot rolled and cold finished products; tubes; single strand wire; wheels, tyres and axles; and unworked castings and forgings where reported. Trade within the European Community, and within the Council for Mutual Economic Assistance (CMEA, also known as COMECON), is included. The imports of many developing nations for the most recent years have been estimated from the destinations declared by steel exporters.

Consumption

- 10 Apparent consumption of crude steel was developed as Production + Imports - Exports. The production figures were taken from Table 2; exports and imports from Tables 7 and 8 were converted into crude steel equivalent by using a factor of $1.3/(1+0.175c)$, where c is the domestic proportion of crude steel which is continuously cast. This adjustment was made to avoid distortion of the export or import share relative to domestic production. For countries where imports predominate, average continuous casting shares of the major exporters were used. For some countries, marked (D) in the table, calculations made by national statistical authorities were used in preference to this standard methodology. Particularly in the case of Taiwan (ROC), a significant amount of steel products is obtained from the re-rolling of secondary material.
- 12 The finished steel figures, other than those marked (D), were calculated by multiplying crude steel production by $(1+0.175c)/1.3$, where c is the continuous cast share of domestic output, in order to estimate the finished product output of the domestic industry. Exports/imports taken from Tables 7 and 8 were then subtracted/added to reach apparent consumption. This methodology takes no account of the re-rolling of secondary material, inventory changes within the industry, or yield differences. For the countries marked (D), calculations made by the national statistical authorities replaced this standard methodology. Such calculations are based on deliveries rather than production, and incorporate methods to avoid the double counting of deliveries or imports which are further worked within the steel industry.

Sources

In addition to information supplied by IISI's own respondents from within its membership, data has been obtained from the publications of the United Kingdom Iron and Steel Statistics Bureau (UK ISSB), the Instituto Latinoamericano del Fierro y el Acero (ILAFA), the Instituto Brasileiro de Siderurgia (IBS), the South East Asian Iron and Steel Institute (SEASIS), the International Monetary Fund (IMF), the Organisation for Economic Co-operation and Development (OECD), the Association of Iron Ore Exporting Countries (APEF), the United Nations Conference on Trade and Development (UNCTAD), and the United Nations Economic Commission for Europe.

International Iron and Steel Institute

Founded in 1967, the International Iron and Steel Institute (IISI) is a non-profit research organisation whose members are steel companies, national steel federations and steel research associations in 43 countries. Together these 43 countries produced 98 percent of 1989 world crude steel production excluding that of the USSR and other members of the Council for Mutual Economic Assistance (CMEA), the People's Republic of China and DPR Korea.

IISI undertakes research into economic, financial, technological, environmental and promotional aspects of world steel and into various raw materials and industrial relations matters on behalf of its members. It also collects, evaluates and disseminates world steel statistics.



International Iron and Steel Institute
Association internationale à but scientifique
Rue Col. Bourg, 120
B-1140 Brussels, Belgium